

Section A, Instructions

TIMES

MATERIALS

INSTRUCTIONS

STRUCTURE

EXIT

Section A

1 2

3 4

5 6

7 8

9 10

11 12

13 14

15 16

17 18

19 20

Section B

1 2

3 4

5 6

7 8

9 10

11 12

13 14

15

Section C

Brief Guide

1 2

Demo Concept

1 2

SECTION A – Multiple-choice questions

20 marks

Answer all questions.

Choose the response that is correct or that best answers the question.

Click the button next to the correct answer. Your answer is confirmed in the box at the base of the question.

Each question is worth one mark. Marks will not be deducted for incorrect answers.

Answers will be automatically saved.

You can review and/or change your answers at any stage.

BACK

NEXT

Section A, Question 1

TIMES

MATERIALS

INSTRUCTIONS

STRUCTURE

EXIT

Section A

- | | |
|----|----|
| 1 | 2 |
| 3 | 4 |
| 5 | 6 |
| 7 | 8 |
| 9 | 10 |
| 11 | 12 |
| 13 | 14 |
| 15 | 16 |
| 17 | 18 |
| 19 | 20 |

Section B

- | | |
|----|----|
| 1 | 2 |
| 3 | 4 |
| 5 | 6 |
| 7 | 8 |
| 9 | 10 |
| 11 | 12 |
| 13 | 14 |
| 15 | |

Section C

- | | |
|-------|---------|
| Brief | Guide |
| 1 | 2 |
| Demo | Concept |
| 1 | 2 |

Which one of the following is a proofreading technique?

- A formatting
- B spellchecking
- C Gunning Fog Index
- D responding to brief

Selected response:

Click on an answer button (A, B, C or D) or use the keyboard to select your answer.

BACK

NEXT

Section A, Question 2

TIMES

MATERIALS

INSTRUCTIONS

STRUCTURE

EXIT

Section A

- | | |
|----|----|
| 1 | 2 |
| 3 | 4 |
| 5 | 6 |
| 7 | 8 |
| 9 | 10 |
| 11 | 12 |
| 13 | 14 |
| 15 | 16 |
| 17 | 18 |
| 19 | 20 |

Section B

- | | |
|----|----|
| 1 | 2 |
| 3 | 4 |
| 5 | 6 |
| 7 | 8 |
| 9 | 10 |
| 11 | 12 |
| 13 | 14 |
| 15 | |

Section C

- | | |
|-------|---------|
| Brief | Guide |
| 1 | 2 |
| Demo | Concept |
| 1 | 2 |

Your team has been commissioned to develop a website to display scientific information for a solar power company.

Which team member would be typically required to ensure the usability of information on the website?

- A editor
- B programmer
- C asset creator
- D information architect

Selected response:

Click on an answer button (A, B, C or D) or use the keyboard to select your answer.

BACK

NEXT

Section A, Question 3

TIMES

MATERIALS

INSTRUCTIONS

STRUCTURE

EXIT

Section A

- | | |
|----|----|
| 1 | 2 |
| 3 | 4 |
| 5 | 6 |
| 7 | 8 |
| 9 | 10 |
| 11 | 12 |
| 13 | 14 |
| 15 | 16 |
| 17 | 18 |
| 19 | 20 |

Section B

- | | |
|----|----|
| 1 | 2 |
| 3 | 4 |
| 5 | 6 |
| 7 | 8 |
| 9 | 10 |
| 11 | 12 |
| 13 | 14 |
| 15 | |

Section C

- | | |
|-------|---------|
| Brief | Guide |
| 1 | 2 |
| Demo | Concept |
| 1 | 2 |

Australian copyright

- A is not transferable.
- B is not enforceable by law.
- C lasts for life plus 60 years.
- D gives exclusive rights to control reproduction.

Selected response:

Click on an answer button (A, B, C or D) or use the keyboard to select your answer.

BACK

NEXT

Section A, Question 4

TIMES

MATERIALS

INSTRUCTIONS

STRUCTURE

EXIT

Section A

- | | |
|----|----|
| 1 | 2 |
| 3 | 4 |
| 5 | 6 |
| 7 | 8 |
| 9 | 10 |
| 11 | 12 |
| 13 | 14 |
| 15 | 16 |
| 17 | 18 |
| 19 | 20 |

Section B

- | | |
|----|----|
| 1 | 2 |
| 3 | 4 |
| 5 | 6 |
| 7 | 8 |
| 9 | 10 |
| 11 | 12 |
| 13 | 14 |
| 15 | |

Section C

- | | |
|-------|---------|
| Brief | Guide |
| 1 | 2 |
| Demo | Concept |
| 1 | 2 |

'What is the point of all this studying? Real life will teach me what I need to know to survive.'

Which writing style best describes the text above?

- A formal
- B dramatic
- C whimsical
- D humorous

Selected response:

Click on an answer button (A, B, C or D) or use the keyboard to select your answer.

BACK

NEXT

Section A, Question 5

TIMES

MATERIALS

INSTRUCTIONS

STRUCTURE

EXIT

Section A

- | | |
|----|----|
| 1 | 2 |
| 3 | 4 |
| 5 | 6 |
| 7 | 8 |
| 9 | 10 |
| 11 | 12 |
| 13 | 14 |
| 15 | 16 |
| 17 | 18 |
| 19 | 20 |

Section B

- | | |
|----|----|
| 1 | 2 |
| 3 | 4 |
| 5 | 6 |
| 7 | 8 |
| 9 | 10 |
| 11 | 12 |
| 13 | 14 |
| 15 | |

Section C

- | | |
|-------|---------|
| Brief | Guide |
| 1 | 2 |
| Demo | Concept |
| 1 | 2 |

A layered image file is being worked on by a number of members of a design team.

It is best to save the image file as a

- A PSD.
- B PDF.
- C GIF.
- D JPEG.

Selected response:

Click on an answer button (A, B, C or D) or use the keyboard to select your answer.

BACK

NEXT

Section A, Question 6

TIMES

MATERIALS

INSTRUCTIONS

STRUCTURE

EXIT

Section A

- | | |
|----|----|
| 1 | 2 |
| 3 | 4 |
| 5 | 6 |
| 7 | 8 |
| 9 | 10 |
| 11 | 12 |
| 13 | 14 |
| 15 | 16 |
| 17 | 18 |
| 19 | 20 |

Section B

- | | |
|----|----|
| 1 | 2 |
| 3 | 4 |
| 5 | 6 |
| 7 | 8 |
| 9 | 10 |
| 11 | 12 |
| 13 | 14 |
| 15 | |

Section C

- | | |
|-------|---------|
| Brief | Guide |
| 1 | 2 |
| Demo | Concept |
| 1 | 2 |

When the design element shape acquires the third dimension of depth, it becomes the design element

- A perspective.
- B texture.
- C form.
- D tone.

Selected response:

Click on an answer button (A, B, C or D) or use the keyboard to select your answer.

BACK

NEXT

Section A, Question 7

TIMES

MATERIALS

INSTRUCTIONS

STRUCTURE

EXIT

Section A

- | | |
|----|----|
| 1 | 2 |
| 3 | 4 |
| 5 | 6 |
| 7 | 8 |
| 9 | 10 |
| 11 | 12 |
| 13 | 14 |
| 15 | 16 |
| 17 | 18 |
| 19 | 20 |

Section B

- | | |
|----|----|
| 1 | 2 |
| 3 | 4 |
| 5 | 6 |
| 7 | 8 |
| 9 | 10 |
| 11 | 12 |
| 13 | 14 |
| 15 | |

Section C

- | | |
|-------|---------|
| Brief | Guide |
| 1 | 2 |
| Demo | Concept |
| 1 | 2 |

In the cover design shown, the spacing of the letters in the title 'Fall Line' has been adjusted.

In typography, this is known as

- A leading.
- B kerning.
- C tracking.
- D ascending.



Selected response:

Click on an answer button (A, B, C or D) or use the keyboard to select your answer.

BACK

NEXT

Section A, Question 8

TIMES

MATERIALS

INSTRUCTIONS

STRUCTURE

EXIT

Section A

- | | |
|----|----|
| 1 | 2 |
| 3 | 4 |
| 5 | 6 |
| 7 | 8 |
| 9 | 10 |
| 11 | 12 |
| 13 | 14 |
| 15 | 16 |
| 17 | 18 |
| 19 | 20 |

Section B

- | | |
|----|----|
| 1 | 2 |
| 3 | 4 |
| 5 | 6 |
| 7 | 8 |
| 9 | 10 |
| 11 | 12 |
| 13 | 14 |
| 15 | |

Section C

- | | |
|-------|---------|
| Brief | Guide |
| 1 | 2 |
| Demo | Concept |
| 1 | 2 |

'Boats jump near chocolate mountains.'

The sentence above is an example of the creative thinking technique called

- A mind mapping.
- B trigger words.
- C sequencing.
- D word salad.

Selected response:

Click on an answer button (A, B, C or D) or use the keyboard to select your answer.

BACK

NEXT

Section A, Question 9

TIMES

MATERIALS

INSTRUCTIONS

STRUCTURE

EXIT

Section A

- | | |
|----|----|
| 1 | 2 |
| 3 | 4 |
| 5 | 6 |
| 7 | 8 |
| 9 | 10 |
| 11 | 12 |
| 13 | 14 |
| 15 | 16 |
| 17 | 18 |
| 19 | 20 |

Section B

- | | |
|----|----|
| 1 | 2 |
| 3 | 4 |
| 5 | 6 |
| 7 | 8 |
| 9 | 10 |
| 11 | 12 |
| 13 | 14 |
| 15 | |

Section C

- | | |
|-------|---------|
| Brief | Guide |
| 1 | 2 |
| Demo | Concept |
| 1 | 2 |

This digitally altered photograph shows the use of

- A linear perspective.
- B inks and washes.
- C mark-making.
- D pattern.



Selected response:

Click on an answer button (A, B, C or D) or use the keyboard to select your answer.

BACK

NEXT

Section A, Question 10

TIMES

MATERIALS

INSTRUCTIONS

STRUCTURE

EXIT

Section A

- | | |
|----|----|
| 1 | 2 |
| 3 | 4 |
| 5 | 6 |
| 7 | 8 |
| 9 | 10 |
| 11 | 12 |
| 13 | 14 |
| 15 | 16 |
| 17 | 18 |
| 19 | 20 |

Section B

- | | |
|----|----|
| 1 | 2 |
| 3 | 4 |
| 5 | 6 |
| 7 | 8 |
| 9 | 10 |
| 11 | 12 |
| 13 | 14 |
| 15 | |

Section C

- | | |
|-------|---------|
| Brief | Guide |
| 1 | 2 |
| Demo | Concept |
| 1 | 2 |

'Sitting in my studio I glance at the wooden venetian blinds slicing up the tree outside. Horizontal lines contrasting with the gnarled bark of the gum tree. The leaves move. The blinds don't. They are visually slicing the landscape outside into horizontal bands.'

This transcript from an art maker's audio recorder best demonstrates the creative design process of

- A trigger words.
- B daydreaming.
- C visualisation.
- D storytelling.

Selected response:

Click on an answer button (A, B, C or D) or use the keyboard to select your answer.

BACK

NEXT

Section A, Question 11

TIMES

MATERIALS

INSTRUCTIONS

STRUCTURE

EXIT

Section A

- | | |
|----|----|
| 1 | 2 |
| 3 | 4 |
| 5 | 6 |
| 7 | 8 |
| 9 | 10 |
| 11 | 12 |
| 13 | 14 |
| 15 | 16 |
| 17 | 18 |
| 19 | 20 |

Section B

- | | |
|----|----|
| 1 | 2 |
| 3 | 4 |
| 5 | 6 |
| 7 | 8 |
| 9 | 10 |
| 11 | 12 |
| 13 | 14 |
| 15 | |

Section C

- | | |
|-------|---------|
| Brief | Guide |
| 1 | 2 |
| Demo | Concept |
| 1 | 2 |

The design principle most used in this two-dimensional form is

- A harmony.
- B contrast.
- C pattern.
- D rhythm.



Selected response:

Click on an answer button (A, B, C or D) or use the keyboard to select your answer.

BACK

NEXT

Section A, Question 12

TIMES

MATERIALS

INSTRUCTIONS

STRUCTURE

EXIT

Section A

- | | |
|----|----|
| 1 | 2 |
| 3 | 4 |
| 5 | 6 |
| 7 | 8 |
| 9 | 10 |
| 11 | 12 |
| 13 | 14 |
| 15 | 16 |
| 17 | 18 |
| 19 | 20 |

Section B

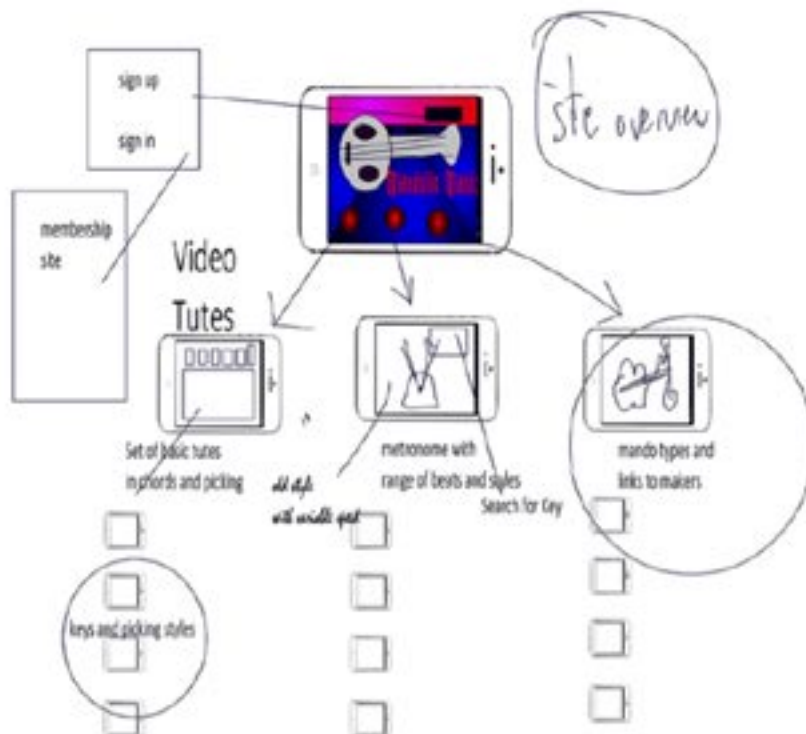
- | | |
|----|----|
| 1 | 2 |
| 3 | 4 |
| 5 | 6 |
| 7 | 8 |
| 9 | 10 |
| 11 | 12 |
| 13 | 14 |
| 15 | |

Section C

- | | |
|-------|---------|
| Brief | Guide |
| 1 | 2 |
| Demo | Concept |
| 1 | 2 |

Which one of the following best describes the diagram shown?

- A flow chart
- B storyboard
- C thumbnail sketch
- D user interface design



Selected response:

BACK

NEXT

Section A, Question 13

TIMES

MATERIALS

INSTRUCTIONS

STRUCTURE

EXIT

Section A

1 2

3 4

5 6

7 8

9 10

11 12

13 14

15 16

17 18

19 20

Section B

1 2

3 4

5 6

7 8

9 10

11 12

13 14

15

Section C

Brief Guide

1 2

Demo Concept

1 2

The html code for 'nav' will not display because it

- A has no associated Cascading Style Sheet (CSS).
- B has an incorrect closing tag.
- C sits in the head element.
- D has no content.

```
<!doctype html>
<html>
<head>
<meta charset="UTF-8">
<title>UntitledDocument</title>
<nav> cars boats trains </nav>
</head>
<body>
<container></container>
<left_column> </left_column>
<right_column> </right_column>
</body>
</html>
```

Selected response:

Click on an answer button (A, B, C or D) or use the keyboard to select your answer.

BACK

NEXT

Section A, Question 14

TIMES

MATERIALS

INSTRUCTIONS

STRUCTURE

EXIT

Section A

- | | |
|----|----|
| 1 | 2 |
| 3 | 4 |
| 5 | 6 |
| 7 | 8 |
| 9 | 10 |
| 11 | 12 |
| 13 | 14 |
| 15 | 16 |
| 17 | 18 |
| 19 | 20 |

Section B

- | | |
|----|----|
| 1 | 2 |
| 3 | 4 |
| 5 | 6 |
| 7 | 8 |
| 9 | 10 |
| 11 | 12 |
| 13 | 14 |
| 15 | |

Section C

- | | |
|-------|---------|
| Brief | Guide |
| 1 | 2 |
| Demo | Concept |
| 1 | 2 |

Alt tags are

- A seen on web page interfaces.
- B primarily used for metadata tags.
- C attributes for video elements on web pages.
- D required to comply with W3C accessibility standards.

Selected response:

Click on an answer button (A, B, C or D) or use the keyboard to select your answer.

BACK

NEXT

Section A, Question 15

TIMES

MATERIALS

INSTRUCTIONS

STRUCTURE

EXIT

Section A

- | | |
|----|----|
| 1 | 2 |
| 3 | 4 |
| 5 | 6 |
| 7 | 8 |
| 9 | 10 |
| 11 | 12 |
| 13 | 14 |
| 15 | 16 |
| 17 | 18 |
| 19 | 20 |

Section B

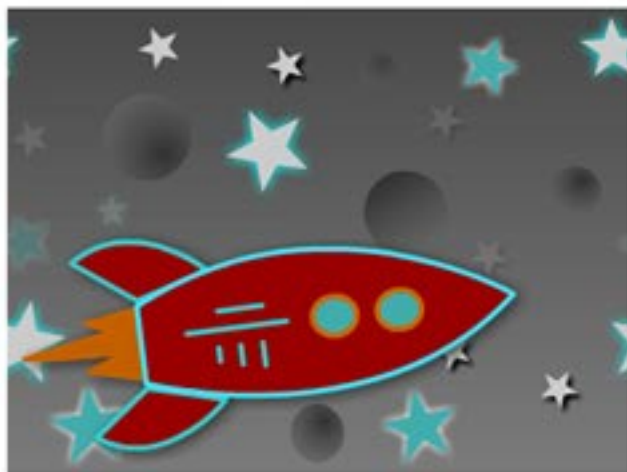
- | | |
|----|----|
| 1 | 2 |
| 3 | 4 |
| 5 | 6 |
| 7 | 8 |
| 9 | 10 |
| 11 | 12 |
| 13 | 14 |
| 15 | |

Section C

- | | |
|-------|---------|
| Brief | Guide |
| 1 | 2 |
| Demo | Concept |
| 1 | 2 |

What animation technique has been used to convey the illusion of a rocket ship travelling through space?

- A acceleration/deceleration
- B looping backgrounds
- C motion paths
- D pacing



Selected response:

Click on an answer button (A, B, C or D) or use the keyboard to select your answer.

BACK

NEXT

Section A, Question 16

TIMES

MATERIALS

INSTRUCTIONS

STRUCTURE

EXIT

Section A

- | | |
|----|----|
| 1 | 2 |
| 3 | 4 |
| 5 | 6 |
| 7 | 8 |
| 9 | 10 |
| 11 | 12 |
| 13 | 14 |
| 15 | 16 |
| 17 | 18 |
| 19 | 20 |

Section B

- | | |
|----|----|
| 1 | 2 |
| 3 | 4 |
| 5 | 6 |
| 7 | 8 |
| 9 | 10 |
| 11 | 12 |
| 13 | 14 |
| 15 | |

Section C

- | | |
|-------|---------|
| Brief | Guide |
| 1 | 2 |
| Demo | Concept |
| 1 | 2 |

A 'gothic anime' animation for a game is an example of

- A a montage.
- B a narrative.
- C storytelling.
- D a style/genre.

Selected response:

Click on an answer button (A, B, C or D) or use the keyboard to select your answer.

BACK

NEXT

Section A, Question 17

TIMES

MATERIALS

INSTRUCTIONS

STRUCTURE

EXIT

Section A

- | | |
|----|----|
| 1 | 2 |
| 3 | 4 |
| 5 | 6 |
| 7 | 8 |
| 9 | 10 |
| 11 | 12 |
| 13 | 14 |
| 15 | 16 |
| 17 | 18 |
| 19 | 20 |

Section B

- | | |
|----|----|
| 1 | 2 |
| 3 | 4 |
| 5 | 6 |
| 7 | 8 |
| 9 | 10 |
| 11 | 12 |
| 13 | 14 |
| 15 | |

Section C

- | | |
|-------|---------|
| Brief | Guide |
| 1 | 2 |
| Demo | Concept |
| 1 | 2 |

An object placed at the beginning of a timeline appears at 25% alpha and changes to 100% alpha over three seconds.

What is the opacity level at the two-second mark?

- A 25%
- B 50%
- C 75%
- D 100%

Selected response:

Click on an answer button (A, B, C or D) or use the keyboard to select your answer.

BACK

NEXT

Section A, Question 18

TIMES

MATERIALS

INSTRUCTIONS

STRUCTURE

EXIT

Section A

- | | |
|----|----|
| 1 | 2 |
| 3 | 4 |
| 5 | 6 |
| 7 | 8 |
| 9 | 10 |
| 11 | 12 |
| 13 | 14 |
| 15 | 16 |
| 17 | 18 |
| 19 | 20 |

Section B

- | | |
|----|----|
| 1 | 2 |
| 3 | 4 |
| 5 | 6 |
| 7 | 8 |
| 9 | 10 |
| 11 | 12 |
| 13 | 14 |
| 15 | |

Section C

- | | |
|-------|---------|
| Brief | Guide |
| 1 | 2 |
| Demo | Concept |
| 1 | 2 |

A video provider delivers a webcast to an end user so that the content is being received live as it is being presented.

This process is best described as

- A sampling.
- B buffering.
- C streaming.
- D downloading.

Selected response:

Click on an answer button (A, B, C or D) or use the keyboard to select your answer.

BACK

NEXT

Section A, Question 19

TIMES

MATERIALS

INSTRUCTIONS

STRUCTURE

EXIT

Section A

- | | |
|----|----|
| 1 | 2 |
| 3 | 4 |
| 5 | 6 |
| 7 | 8 |
| 9 | 10 |
| 11 | 12 |
| 13 | 14 |
| 15 | 16 |
| 17 | 18 |
| 19 | 20 |

Section B

- | | |
|----|----|
| 1 | 2 |
| 3 | 4 |
| 5 | 6 |
| 7 | 8 |
| 9 | 10 |
| 11 | 12 |
| 13 | 14 |
| 15 | |

Section C

- | | |
|-------|---------|
| Brief | Guide |
| 1 | 2 |
| Demo | Concept |
| 1 | 2 |

Video metadata tags

- A do not aid in search engine optimisation.
- B help to sort and quickly find videos.
- C are only automatically generated.
- D cannot include keywords.

Selected response:

Click on an answer button (A, B, C or D) or use the keyboard to select your answer.

BACK

NEXT

Section A, Question 20

TIMES

MATERIALS

INSTRUCTIONS

STRUCTURE

EXIT

Section A

- | | |
|----|----|
| 1 | 2 |
| 3 | 4 |
| 5 | 6 |
| 7 | 8 |
| 9 | 10 |
| 11 | 12 |
| 13 | 14 |
| 15 | 16 |
| 17 | 18 |
| 19 | 20 |

Section B

- | | |
|----|----|
| 1 | 2 |
| 3 | 4 |
| 5 | 6 |
| 7 | 8 |
| 9 | 10 |
| 11 | 12 |
| 13 | 14 |
| 15 | |

Section C

- | | |
|-------|---------|
| Brief | Guide |
| 1 | 2 |
| Demo | Concept |
| 1 | 2 |

Which one of the following is a video container format?

- A MOV
- B WAV
- C H.264
- D Sorenson

Selected response:

Click on an answer button (A, B, C or D) or use the keyboard to select your answer.

End of Section A

BACK

NEXT