

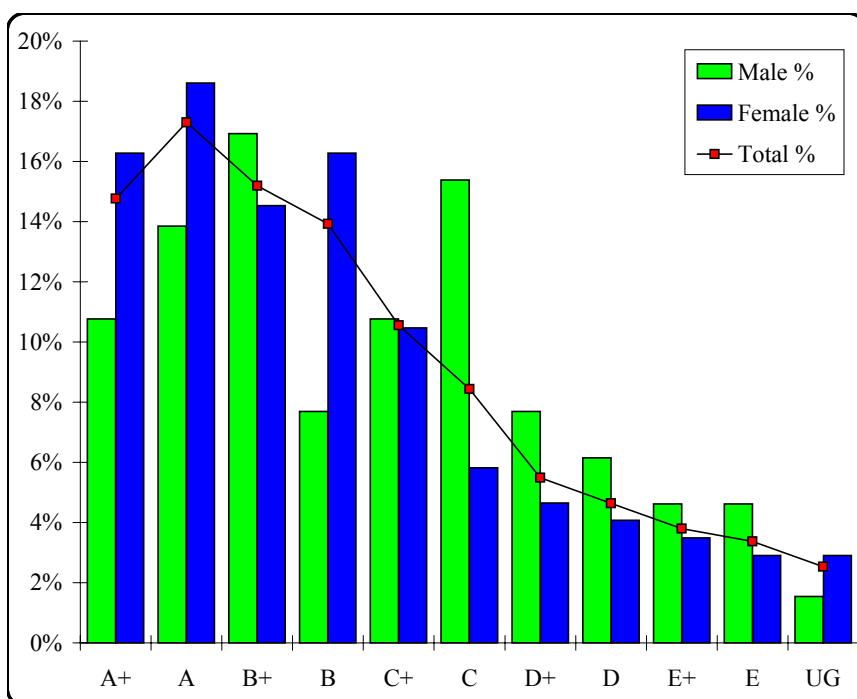
Contemporary Australian Society

Graded Assessment 1 COURSEWORK UNIT 3

Table of Grade Distributions: male, female and all students assessed

GRADE	A+	A	B+	B	C+	C	D+	D	E+	E	UG	Total
Male	7	9	11	5	7	10	5	4	3	3	1	65
Male %	11%	14%	17%	8%	11%	15%	8%	6%	5%	5%	2%	100%
Female	28	32	25	28	18	10	8	7	6	5	5	172
Female %	16%	19%	15%	16%	10%	6%	5%	4%	3%	3%	3%	100%
Total	35	41	36	33	25	20	13	11	9	8	6	237
Total %	15%	17%	15%	14%	11%	8%	5%	5%	4%	3%	3%	100%
Cumul %	15%	32%	47%	61%	72%	80%	86%	90%	94%	97%	100%	
Scaling Points	100–85	84–75	74–67	66–58	57–51	50–47	46–35	34–29	28–19	18–10	9–0	Max 100

Summary Statistics:	
Mean	61.22
Std. dev.	22.29
Median	B
Not Assessed:	
Male	10
Male %	13%
Female	10
Female %	5%
All	20
All %	8%
Total Enrolments:	
Male	75
Female	182
All	257



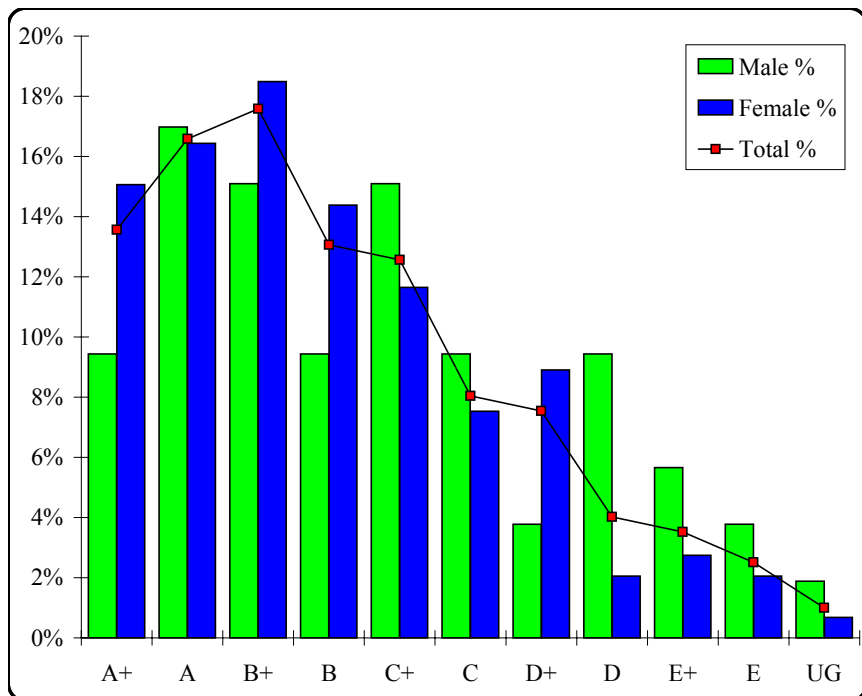
Contemporary Australian Society

Graded Assessment 2 COURSEWORK UNIT 4

Table of Grade Distributions: male, female and all students assessed

GRADE	A+	A	B+	B	C+	C	D+	D	E+	E	UG	Total
Male	5	9	8	5	8	5	2	5	3	2	1	53
Male %	9%	17%	15%	9%	15%	9%	4%	9%	6%	4%	2%	100%
Female	22	24	27	21	17	11	13	3	4	3	1	146
Female %	15%	16%	18%	14%	12%	8%	9%	2%	3%	2%	1%	100%
Total	27	33	35	26	25	16	15	8	7	5	2	199
Total %	14%	17%	18%	13%	13%	8%	8%	4%	4%	3%	1%	100%
Cumul %	14%	30%	48%	61%	73%	81%	89%	93%	96%	99%	100%	
Scaling Points	100–91	90–80	79–71	70–65	64–58	57–51	50–46	45–42	41–36	35–25	24–0	Max 100

Summary Statistics:	
Mean	68.45
Std. dev.	18.52
Median	B
Not Assessed:	
Male	22
Male %	29%
Female	36
Female %	20%
All	58
All %	23%
Total Enrolments:	
Male	75
Female	182
All	257



Contemporary Australian Society

Graded Assessment 3 WRITTEN EXAMINATION

Table of Grade Distributions: male, female and all students assessed

GRADE	A+	A	B+	B	C+	C	D+	D	E+	E	UG	Total
Male	3	6	9	6	10	5	8	1	1	1	0	50
Male %	6%	12%	18%	12%	20%	10%	16%	2%	2%	2%	0%	100%
Female	9	12	22	26	27	25	10	5	4	0	1	141
Female %	6%	9%	16%	18%	19%	18%	7%	4%	3%	0%	1%	100%
Total	12	18	31	32	37	30	18	6	5	1	1	191
Total %	6%	9%	16%	17%	19%	16%	9%	3%	3%	1%	1%	100%
Cumul %	6%	16%	32%	49%	68%	84%	93%	96%	99%	99%	100%	
Scaling Points	200–167	166–152	151–136	135–113	112–94	93–74	73–52	51–42	41–26	25–22	21–0	Max 200

Summary Statistics:	
Mean	111.59
Std. dev.	37.49
Median	C+
Not Assessed:	
Male	25
Male %	33%
Female	41
Female %	23%
All	66
All %	26%
Total Enrolments:	
Male	75
Female	182
All	257

