

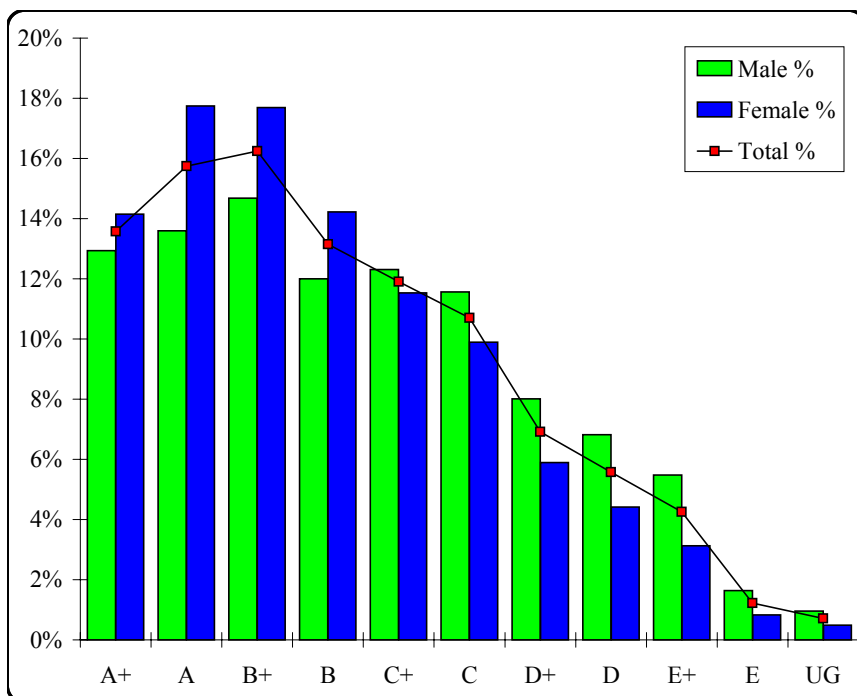
Further Mathematics

Graded Assessment 1 COURSEWORK UNIT 3/4

Table of Grade Distributions: male, female and all students assessed

GRADE	A+	A	B+	B	C+	C	D+	D	E+	E	UG	Total
Male	1356	1425	1538	1257	1290	1212	839	715	574	172	100	10478
Male %	13%	14%	15%	12%	12%	12%	8%	7%	5%	2%	1%	100%
Female	1594	1998	1993	1602	1299	1114	664	497	352	94	55	11262
Female %	14%	18%	18%	14%	12%	10%	6%	4%	3%	1%	0%	100%
Total	2950	3423	3531	2859	2589	2326	1503	1212	926	266	155	21740
Total %	14%	16%	16%	13%	12%	11%	7%	6%	4%	1%	1%	100%
Cumul %	14%	29%	46%	59%	71%	81%	88%	94%	98%	99%	100%	
Scaling Points	100–87	86–75	74–65	64–58	57–52	51–46	45–41	40–35	34–21	20–10	9–0	Max 100

Summary Statistics:	
Mean	62.88
Std. dev.	19.58
Median	B
Not Assessed:	
Male	216
Male %	2%
Female	162
Female %	1%
All	378
All %	2%
Total Enrolments:	
Male	10694
Female	11424
All	22118



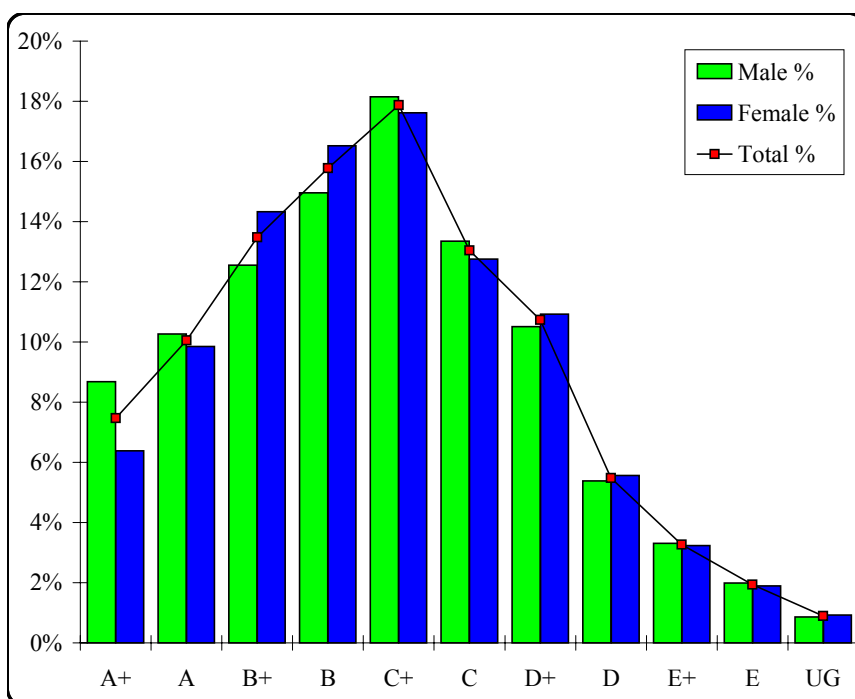
Further Mathematics

Graded Assessment 2 WRITTEN EXAMINATION 1

Table of Grade Distributions: male, female and all students assessed

GRADE	A+	A	B+	B	C+	C	D+	D	E+	E	UG	Total
Male	851	1007	1231	1467	1780	1309	1031	528	324	195	85	9808
Male %	9%	10%	13%	15%	18%	13%	11%	5%	3%	2%	1%	100%
Female	691	1067	1552	1790	1908	1382	1184	603	350	205	100	10832
Female %	6%	10%	14%	17%	18%	13%	11%	6%	3%	2%	1%	100%
Total	1542	2074	2783	3257	3688	2691	2215	1131	674	400	185	20640
Total %	7%	10%	13%	16%	18%	13%	11%	5%	3%	2%	1%	100%
Cumul %	7%	18%	31%	47%	65%	78%	88%	94%	97%	99%	100%	
Scaling Points	80–70	69–62	61–54	53–45	44–38	37–32	31–26	25–22	21–18	17–14	13–0	Max 80

Summary Statistics:	
Mean	44.40
Std. dev.	15.82
Median	C+
Not Assessed:	
Male	886
Male %	8%
Female	592
Female %	5%
All	1478
All %	7%
Total Enrolments:	
Male	10694
Female	11424
All	22118



Further Mathematics

Graded Assessment 3 WRITTEN EXAMINATION 2

Table of Grade Distributions: male, female and all students assessed

GRADE	A+	A	B+	B	C+	C	D+	D	E+	E	UG	Total
Male	836	868	977	1180	1345	1305	1078	882	584	358	376	9789
Male %	9%	9%	10%	12%	14%	13%	11%	9%	6%	4%	4%	100%
Female	644	1041	1311	1519	1647	1470	1091	924	511	346	312	10816
Female %	6%	10%	12%	14%	15%	14%	10%	9%	5%	3%	3%	100%
Total	1480	1909	2288	2699	2992	2775	2169	1806	1095	704	688	20605
Total %	7%	9%	11%	13%	15%	13%	11%	9%	5%	3%	3%	100%
Cumul %	7%	16%	28%	41%	55%	69%	79%	88%	93%	97%	100%	
Scaling Points	120–100	99–86	85–74	73–61	60–50	49–40	39–32	31–24	23–17	16–12	11–0	Max 120

Summary Statistics:	
Mean	55.37
Std. dev.	27.16
Median	C+
Not Assessed:	
Male	905
Male %	8%
Female	608
Female %	5%
All	1513
All %	7%
Total Enrolments:	
Male	10694
Female	11424
All	22118

