

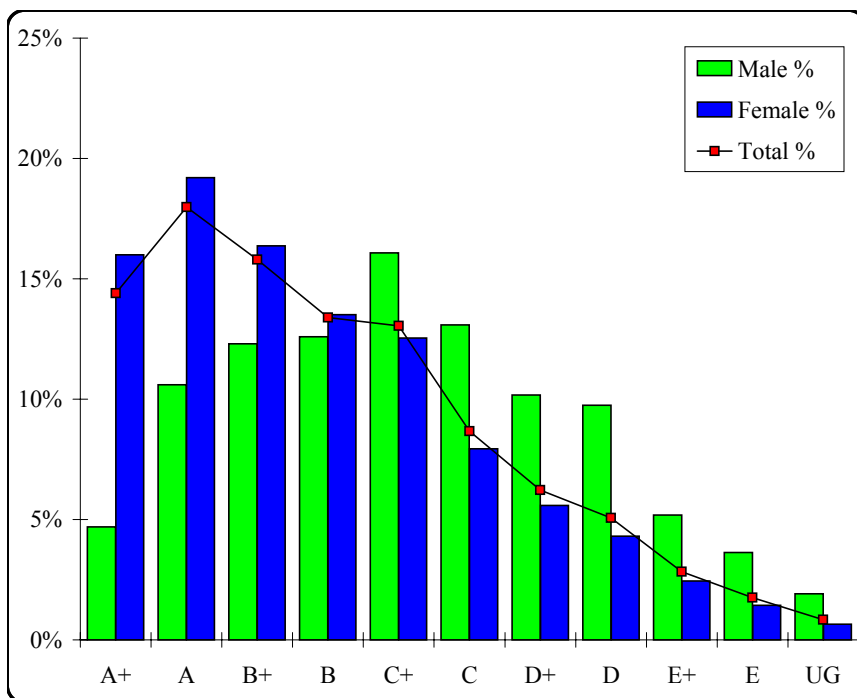
# Health and Human Development

## Graded Assessment 1 COURSEWORK UNIT 3

Table of Grade Distributions: male, female and all students assessed

GRADE	A+	A	B+	B	C+	C	D+	D	E+	E	UG	Total
Male	66	149	173	177	226	184	143	137	73	51	27	1406
Male %	5%	11%	12%	13%	16%	13%	10%	10%	5%	4%	2%	100%
Female	1365	1638	1397	1153	1070	677	476	367	209	123	56	8531
Female %	16%	19%	16%	14%	13%	8%	6%	4%	2%	1%	1%	100%
Total	1431	1787	1570	1330	1296	861	619	504	282	174	83	9937
Total %	14%	18%	16%	13%	13%	9%	6%	5%	3%	2%	1%	100%
Cumul %	14%	32%	48%	62%	75%	83%	90%	95%	97%	99%	100%	
Scaling Points	100–90	89–80	79–73	72–67	66–61	60–56	55–51	50–44	43–32	31–15	14–0	Max 100

Summary Statistics:	
Mean	70.76
Std. dev.	17.25
Median	B
Not Assessed:	
Male	41
Male %	3%
Female	116
Female %	1%
All	157
All %	2%
Total Enrolments:	
Male	1447
Female	8647
All	10094



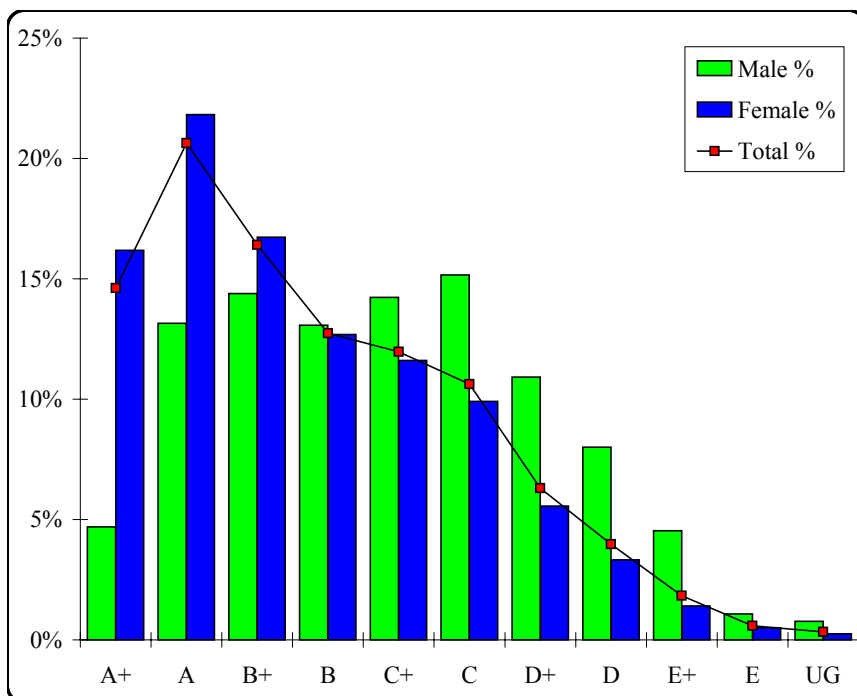
# Health and Human Development

## Graded Assessment 2 COURSEWORK UNIT 4

Table of Grade Distributions: male, female and all students assessed

GRADE	A+	A	B+	B	C+	C	D+	D	E+	E	UG	Total
Male	61	171	187	170	185	197	142	104	59	14	10	1300
Male %	5%	13%	14%	13%	14%	15%	11%	8%	5%	1%	1%	100%
Female	1327	1789	1371	1040	952	812	456	273	115	41	21	8197
Female %	16%	22%	17%	13%	12%	10%	6%	3%	1%	1%	0%	100%
Total	1388	1960	1558	1210	1137	1009	598	377	174	55	31	9497
Total %	15%	21%	16%	13%	12%	11%	6%	4%	2%	1%	0%	100%
Cumul %	15%	35%	52%	64%	76%	87%	93%	97%	99%	100%	100%	
Scaling Points	100–92	91–79	78–71	70–65	64–59	58–52	51–46	45–38	37–25	24–10	9–0	Max 100

Summary Statistics:	
Mean	71.04
Std. dev.	17.44
Median	B+
Not Assessed:	
Male	147
Male %	10%
Female	450
Female %	5%
All	597
All %	6%
Total Enrolments:	
Male	1447
Female	8647
All	10094



# Health and Human Development

## Graded Assessment 3 WRITTEN EXAMINATION

Table of Grade Distributions: male, female and all students assessed

GRADE	A+	A	B+	B	C+	C	D+	D	E+	E	UG	Total
Male	34	75	121	139	226	201	176	125	75	25	38	1235
Male %	3%	6%	10%	11%	18%	16%	14%	10%	6%	2%	3%	100%
Female	722	1012	1034	1220	1171	1017	892	548	211	74	98	7999
Female %	9%	13%	13%	15%	15%	13%	11%	7%	3%	1%	1%	100%
Total	756	1087	1155	1359	1397	1218	1068	673	286	99	136	9234
Total %	8%	12%	13%	15%	15%	13%	12%	7%	3%	1%	1%	100%
Cumul %	8%	20%	32%	47%	62%	76%	87%	94%	97%	99%	100%	
Scaling Points	162–115	114–99	98–86	85–73	72–60	59–49	48–37	36–26	25–18	17–13	12–0	Max 162

Summary Statistics:	
Mean	71.01
Std. dev.	29.60
Median	C+
Not Assessed:	
Male	212
Male %	15%
Female	648
Female %	7%
All	860
All %	9%
Total Enrolments:	
Male	1447
Female	8647
All	10094

