

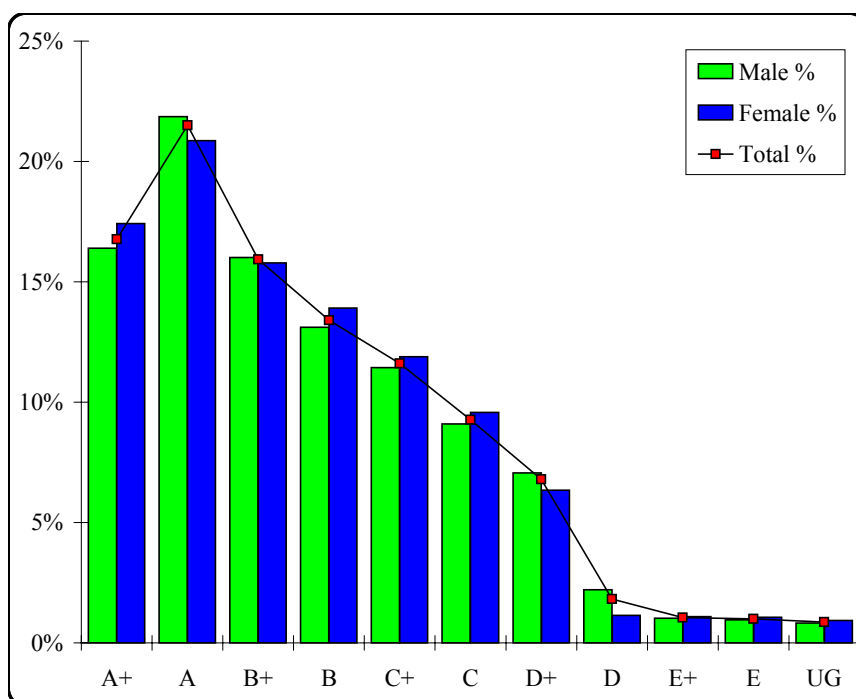
Information Processing & Management

Graded Assessment 1 COURSEWORK UNIT 3

Table of Grade Distributions: male, female and all students assessed

GRADE	A+	A	B+	B	C+	C	D+	D	E+	E	UG	Total
Male	1038	1384	1014	830	724	576	447	140	65	61	52	6331
Male %	16%	22%	16%	13%	11%	9%	7%	2%	1%	1%	1%	100%
Female	640	767	580	511	437	352	233	42	40	39	34	3675
Female %	17%	21%	16%	14%	12%	10%	6%	1%	1%	1%	1%	100%
Total	1678	2151	1594	1341	1161	928	680	182	105	100	86	10006
Total %	17%	21%	16%	13%	12%	9%	7%	2%	1%	1%	1%	100%
Cumul %	17%	38%	54%	68%	79%	88%	95%	97%	98%	99%	100%	
Scaling Points	100–86	85–77	76–70	69–63	62–55	54–46	45–35	34–28	27–20	19–10	9–0	Max 100

Summary Statistics:	
Mean	68.40
Std. dev.	18.29
Median	B+
Not Assessed:	
Male	139
Male %	2%
Female	87
Female %	2%
All	226
All %	2%
Total Enrolments:	
Male	6470
Female	3762
All	10232



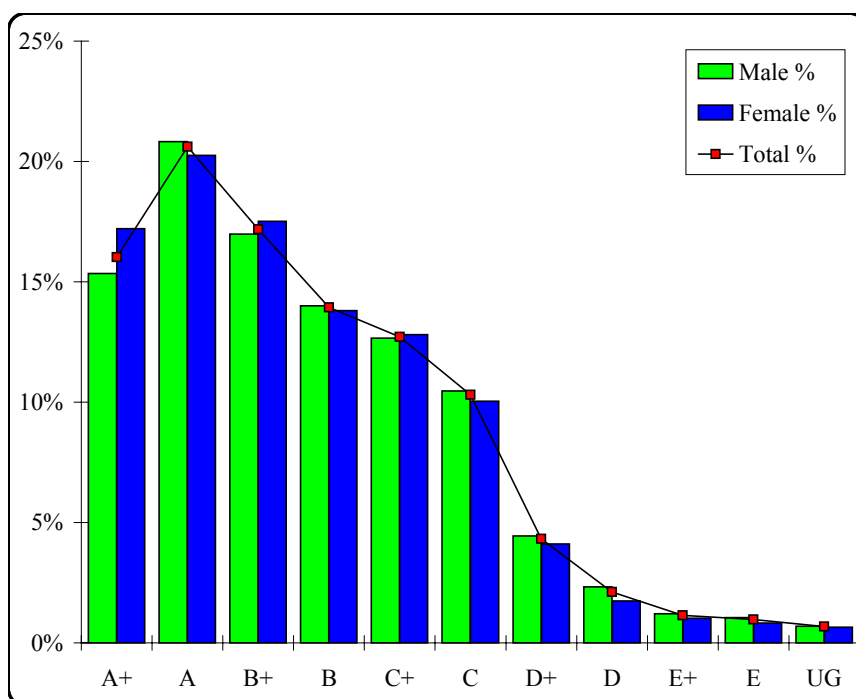
Information Processing & Management

Graded Assessment 2 COURSEWORK UNIT 4

Table of Grade Distributions: male, female and all students assessed

GRADE	A+	A	B+	B	C+	C	D+	D	E+	E	UG	Total
Male	925	1255	1024	844	763	631	268	140	73	63	42	6028
Male %	15%	21%	17%	14%	13%	10%	4%	2%	1%	1%	1%	100%
Female	603	710	614	484	449	352	144	61	36	29	23	3505
Female %	17%	20%	18%	14%	13%	10%	4%	2%	1%	1%	1%	100%
Total	1528	1965	1638	1328	1212	983	412	201	109	92	65	9533
Total %	16%	21%	17%	14%	13%	10%	4%	2%	1%	1%	1%	100%
Cumul %	16%	37%	54%	68%	80%	91%	95%	97%	98%	99%	100%	
Scaling Points	100–86	85–75	74–66	65–57	56–47	46–35	34–27	26–21	20–16	15–10	9–0	Max 100

Summary Statistics:	
Mean	64.66
Std. dev.	20.53
Median	B+
Not Assessed:	
Male	442
Male %	7%
Female	257
Female %	7%
All	699
All %	7%
Total Enrolments:	
Male	6470
Female	3762
All	10232



Information Processing & Management

Graded Assessment 3 WRITTEN EXAMINATION

Table of Grade Distributions: male, female and all students assessed

GRADE	A+	A	B+	B	C+	C	D+	D	E+	E	UG	Total
Male	565	685	924	960	921	712	480	389	200	35	34	5905
Male %	10%	12%	16%	16%	16%	12%	8%	7%	3%	1%	1%	100%
Female	311	323	439	543	552	472	387	261	120	25	13	3446
Female %	9%	9%	13%	16%	16%	14%	11%	8%	3%	1%	0%	100%
Total	876	1008	1363	1503	1473	1184	867	650	320	60	47	9351
Total %	9%	11%	15%	16%	16%	13%	9%	7%	3%	1%	1%	100%
Cumul %	9%	20%	35%	51%	67%	79%	88%	95%	99%	99%	100%	
Scaling Points	180–143	142–132	131–120	119–107	106–92	91–77	76–61	60–43	42–25	24–19	18–0	Max 180

Summary Statistics:	
Mean	103.04
Std. dev.	31.79
Median	B
Not Assessed:	
Male	565
Male %	9%
Female	316
Female %	8%
All	881
All %	9%
Total Enrolments:	
Male	6470
Female	3762
All	10232

