

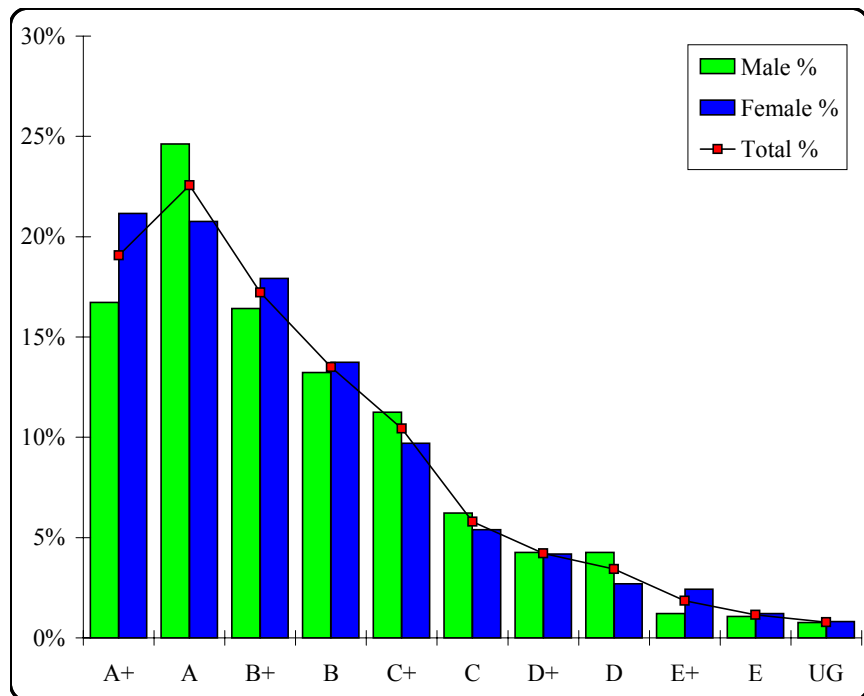
International Studies

Graded Assessment 1 COURSEWORK UNIT 3

Table of Grade Distributions: male, female and all students assessed

GRADE	A+	A	B+	B	C+	C	D+	D	E+	E	UG	Total
Male	110	162	108	87	74	41	28	28	8	7	5	658
Male %	17%	25%	16%	13%	11%	6%	4%	4%	1%	1%	1%	100%
Female	157	154	133	102	72	40	31	20	18	9	6	742
Female %	21%	21%	18%	14%	10%	5%	4%	3%	2%	1%	1%	100%
Total	267	316	241	189	146	81	59	48	26	16	11	1400
Total %	19%	23%	17%	14%	10%	6%	4%	3%	2%	1%	1%	100%
Cumul %	19%	42%	59%	72%	83%	89%	93%	96%	98%	99%	100%	
Scaling Points	100–90	89–80	79–72	71–63	62–53	52–45	44–38	37–28	27–18	17–11	10–0	Max 100

Summary Statistics:	
Mean	71.62
Std. dev.	20.24
Median	B+
Not Assessed:	
Male	8
Male %	1%
Female	16
Female %	2%
All	24
All %	2%
Total Enrolments:	
Male	666
Female	758
All	1424



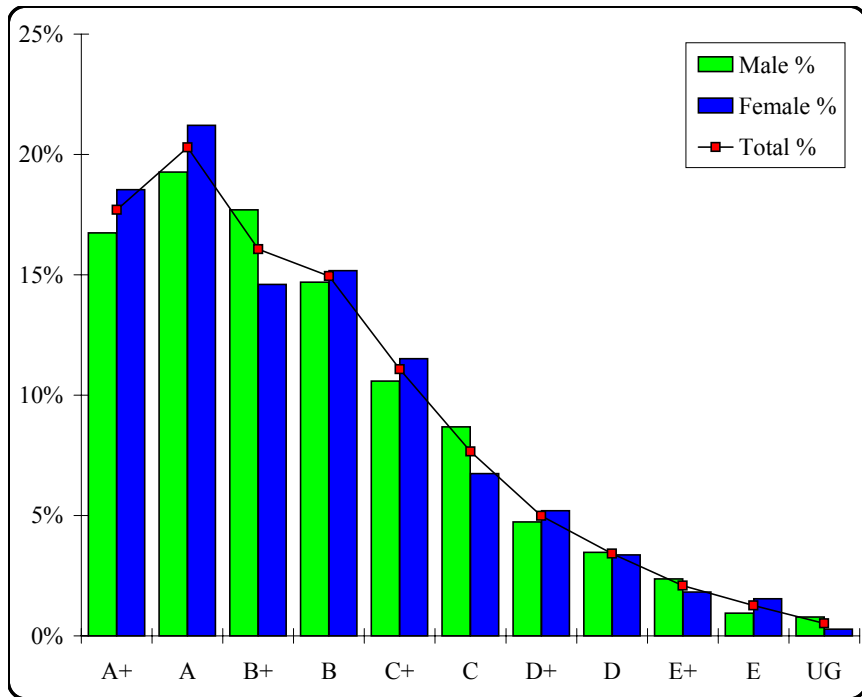
International Studies

Graded Assessment 2 COURSEWORK UNIT 4

Table of Grade Distributions: male, female and all students assessed

GRADE	A+	A	B+	B	C+	C	D+	D	E+	E	UG	Total
Male	106	122	112	93	67	55	30	22	15	6	5	633
Male %	17%	19%	18%	15%	11%	9%	5%	3%	2%	1%	1%	100%
Female	132	151	104	108	82	48	37	24	13	11	2	712
Female %	19%	21%	15%	15%	12%	7%	5%	3%	2%	2%	0%	100%
Total	238	273	216	201	149	103	67	46	28	17	7	1345
Total %	18%	20%	16%	15%	11%	8%	5%	3%	2%	1%	1%	100%
Cumul %	18%	38%	54%	69%	80%	88%	93%	96%	98%	99%	100%	
Scaling Points	100–92	91–82	81–75	74–67	66–57	56–47	46–39	38–32	31–23	22–12	11–0	Max 100

Summary Statistics:	
Mean	72.50
Std. dev.	19.73
Median	B+
Not Assessed:	
Male	33
Male %	5%
Female	46
Female %	6%
All	79
All %	6%
Total Enrolments:	
Male	666
Female	758
All	1424



International Studies

Graded Assessment 3 WRITTEN EXAMINATION

Table of Grade Distributions: male, female and all students assessed

GRADE	A+	A	B+	B	C+	C	D+	D	E+	E	UG	Total
Male	37	61	78	105	114	77	60	30	26	13	17	618
Male %	6%	10%	13%	17%	18%	12%	10%	5%	4%	2%	3%	100%
Female	38	70	90	99	113	112	66	47	28	21	18	702
Female %	5%	10%	13%	14%	16%	16%	9%	7%	4%	3%	3%	100%
Total	75	131	168	204	227	189	126	77	54	34	35	1320
Total %	6%	10%	13%	15%	17%	14%	10%	6%	4%	3%	3%	100%
Cumul %	6%	16%	28%	44%	61%	75%	85%	91%	95%	97%	100%	
Scaling Points	200–177	176–165	164–150	149–131	130–112	111–90	89–65	64–43	42–28	27–15	14–0	Max 200

Summary Statistics:	
Mean	116.82
Std. dev.	45.95
Median	C+
Not Assessed:	
Male	48
Male %	7%
Female	56
Female %	7%
All	104
All %	7%
Total Enrolments:	
Male	666
Female	758
All	1424

