

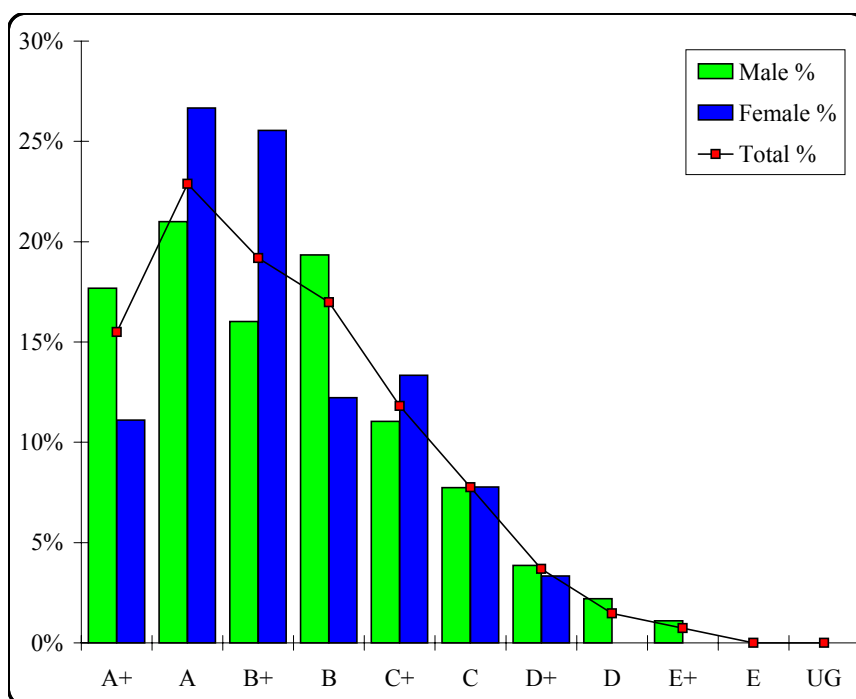
Mathematical Methods (CAS)

Graded Assessment 1 COURSEWORK UNIT 3/4

Table of Grade Distributions: male, female and all students assessed

GRADE	A+	A	B+	B	C+	C	D+	D	E+	E	UG	Total
Male	32	38	29	35	20	14	7	4	2	0	0	181
Male %	18%	21%	16%	19%	11%	8%	4%	2%	1%	0%	0%	100%
Female	10	24	23	11	12	7	3	0	0	0	0	90
Female %	11%	27%	26%	12%	13%	8%	3%	0%	0%	0%	0%	100%
Total	42	62	52	46	32	21	10	4	2	0	0	271
Total %	15%	23%	19%	17%	12%	8%	4%	1%	1%	0%	0%	100%
Cumul %	15%	38%	58%	75%	86%	94%	98%	99%	100%	100%	100%	
Scaling Points	100–90	89–79	78–71	70–61	60–50	49–40	39–32	31–24	23–17	16–10	9–0	Max 100

Summary Statistics:	
Mean	71.39
Std. dev.	17.70
Median	B+
Not Assessed:	
Male	0
Male %	0%
Female	0
Female %	0%
All	0
All %	0%
Total Enrolments:	
Male	181
Female	90
All	271



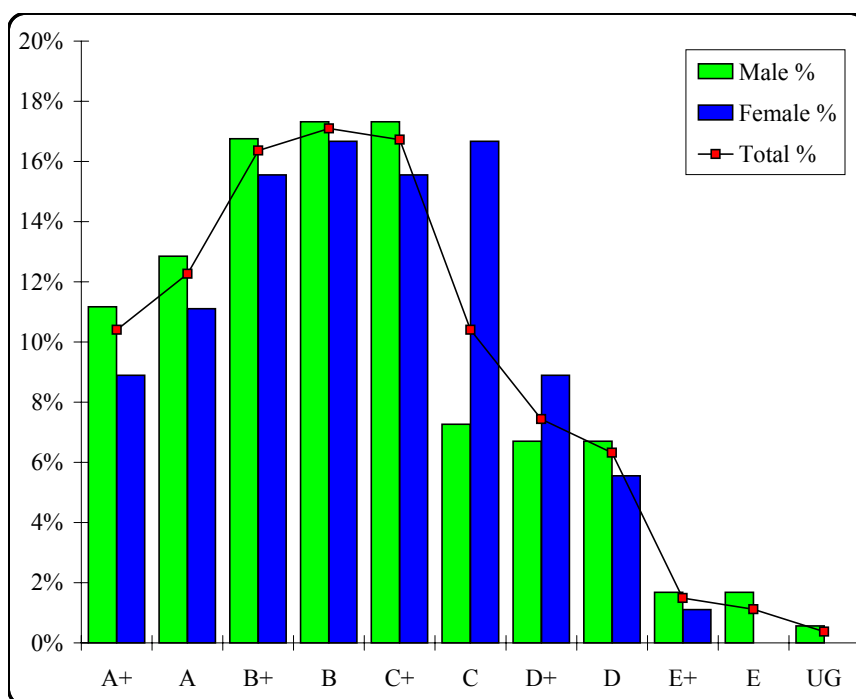
Mathematical Methods (CAS)

Graded Assessment 2 WRITTEN EXAMINATION 1

Table of Grade Distributions: male, female and all students assessed

GRADE	A+	A	B+	B	C+	C	D+	D	E+	E	UG	Total
Male	20	23	30	31	31	13	12	12	3	3	1	179
Male %	11%	13%	17%	17%	17%	7%	7%	7%	2%	2%	1%	100%
Female	8	10	14	15	14	15	8	5	1	0	0	90
Female %	9%	11%	16%	17%	16%	17%	9%	6%	1%	0%	0%	100%
Total	28	33	44	46	45	28	20	17	4	3	1	269
Total %	10%	12%	16%	17%	17%	10%	7%	6%	1%	1%	0%	100%
Cumul %	10%	23%	39%	56%	73%	83%	91%	97%	99%	100%	100%	
Scaling Points	100–91	90–85	84–74	73–64	63–52	51–42	41–31	30–22	21–17	16–10	9–0	Max 100

Summary Statistics:	
Mean	64.43
Std. dev.	21.68
Median	B
Not Assessed:	
Male	2
Male %	1%
Female	0
Female %	0%
All	2
All %	1%
Total Enrolments:	
Male	181
Female	90
All	271



Mathematical Methods (CAS)

Graded Assessment 3 WRITTEN EXAMINATION 2

Table of Grade Distributions: male, female and all students assessed

GRADE	A+	A	B+	B	C+	C	D+	D	E+	E	UG	Total
Male	47	31	33	27	10	5	6	5	5	4	5	178
Male %	26%	17%	19%	15%	6%	3%	3%	3%	3%	2%	3%	100%
Female	16	29	7	14	10	7	3	3	1	0	0	90
Female %	18%	32%	8%	16%	11%	8%	3%	3%	1%	0%	0%	100%
Total	63	60	40	41	20	12	9	8	6	4	5	268
Total %	24%	22%	15%	15%	7%	4%	3%	3%	2%	1%	2%	100%
Cumul %	24%	46%	61%	76%	84%	88%	91%	94%	97%	98%	100%	
Scaling Points	110–85	84–72	71–60	59–47	46–37	36–29	28–23	22–17	16–12	11–5	4–0	Max 110

Summary Statistics:	
Mean	64.01
Std. dev.	25.61
Median	B+
Not Assessed:	
Male	3
Male %	2%
Female	0
Female %	0%
All	3
All %	1%
Total Enrolments:	
Male	181
Female	90
All	271

