

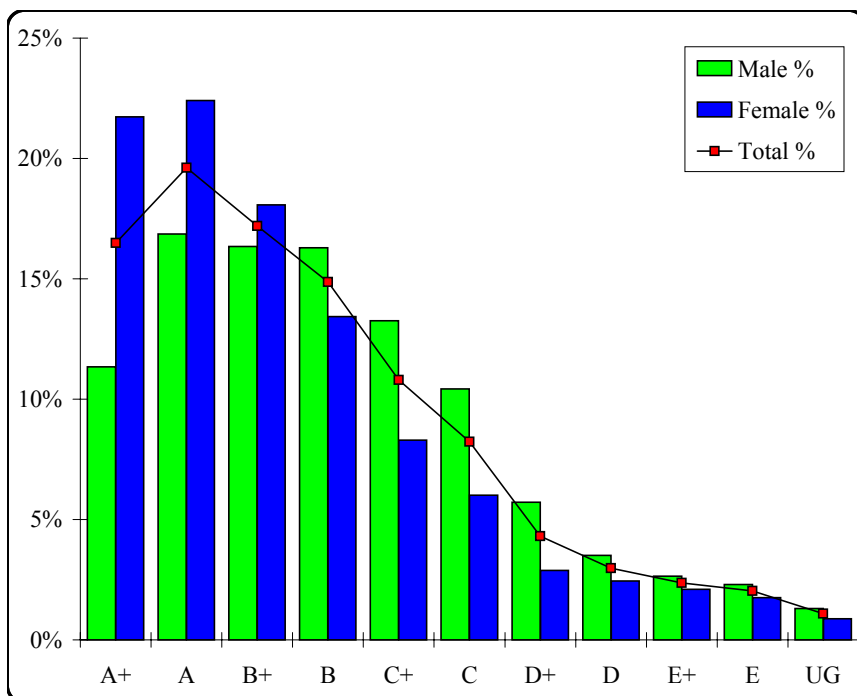
Media

Graded Assessment 1 COURSEWORK UNIT 3/4

Table of Grade Distributions: male, female and all students assessed

GRADE	A+	A	B+	B	C+	C	D+	D	E+	E	UG	Total
Male	236	351	340	339	276	217	119	73	55	48	27	2081
Male %	11%	17%	16%	16%	13%	10%	6%	4%	3%	2%	1%	100%
Female	445	459	370	275	170	123	59	50	43	36	18	2048
Female %	22%	22%	18%	13%	8%	6%	3%	2%	2%	2%	1%	100%
Total	681	810	710	614	446	340	178	123	98	84	45	4129
Total %	16%	20%	17%	15%	11%	8%	4%	3%	2%	2%	1%	100%
Cumul %	16%	36%	53%	68%	79%	87%	92%	95%	97%	99%	100%	
Scaling Points	200–173	172–152	151–134	133–117	116–101	100–85	84–71	70–56	55–36	35–20	19–0	Max 200

Summary Statistics:	
Mean	131.87
Std. dev.	41.26
Median	B+
Not Assessed:	
Male	134
Male %	6%
Female	164
Female %	7%
All	298
All %	7%
Total Enrolments:	
Male	2215
Female	2212
All	4427



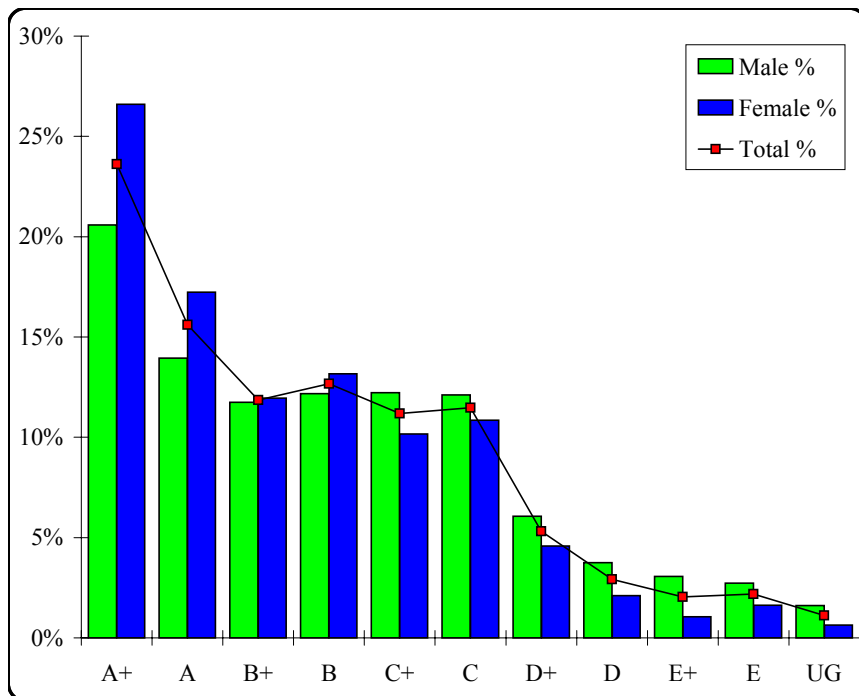
Media

Graded Assessment 2 SCHOOL-ASSESSED TASK

Table of Grade Distributions: male, female and all students assessed

GRADE	A+	A	B+	B	C+	C	D+	D	E+	E	UG	Total
Male	384	260	219	227	228	226	113	70	57	51	30	1865
Male %	21%	14%	12%	12%	12%	12%	6%	4%	3%	3%	2%	100%
Female	505	327	227	250	193	206	87	40	20	31	12	1898
Female %	27%	17%	12%	13%	10%	11%	5%	2%	1%	2%	1%	100%
Total	889	587	446	477	421	432	200	110	77	82	42	3763
Total %	24%	16%	12%	13%	11%	11%	5%	3%	2%	2%	1%	100%
Cumul %	24%	39%	51%	64%	75%	86%	92%	95%	97%	99%	100%	
Scaling Points	30–26	25–23	22–21	20–19	18–17	16–14	13–12	11–10	9–8	7–6	5–0	Max 30

Summary Statistics:	
Mean	20.41
Std. dev.	6.09
Median	B+
Not Assessed:	
Male	350
Male %	16%
Female	314
Female %	14%
All	664
All %	15%
Total Enrolments:	
Male	2215
Female	2212
All	4427



Media

Graded Assessment 3 WRITTEN EXAMINATION

Table of Grade Distributions: male, female and all students assessed

GRADE	A+	A	B+	B	C+	C	D+	D	E+	E	UG	Total
Male	79	105	145	190	277	318	268	175	154	91	53	1855
Male %	4%	6%	8%	10%	15%	17%	14%	9%	8%	5%	3%	100%
Female	138	159	223	287	338	269	186	132	71	57	21	1881
Female %	7%	8%	12%	15%	18%	14%	10%	7%	4%	3%	1%	100%
Total	217	264	368	477	615	587	454	307	225	148	74	3736
Total %	6%	7%	10%	13%	16%	16%	12%	8%	6%	4%	2%	100%
Cumul %	6%	13%	23%	35%	52%	68%	80%	88%	94%	98%	100%	
Scaling Points	120–104	103–95	94–86	85–76	75–63	62–50	49–37	36–26	25–16	15–7	6–0	Max 120

Summary Statistics:	
Mean	62.14
Std. dev.	27.63
Median	C+
Not Assessed:	
Male	360
Male %	16%
Female	331
Female %	15%
All	691
All %	16%
Total Enrolments:	
Male	2215
Female	2212
All	4427

