

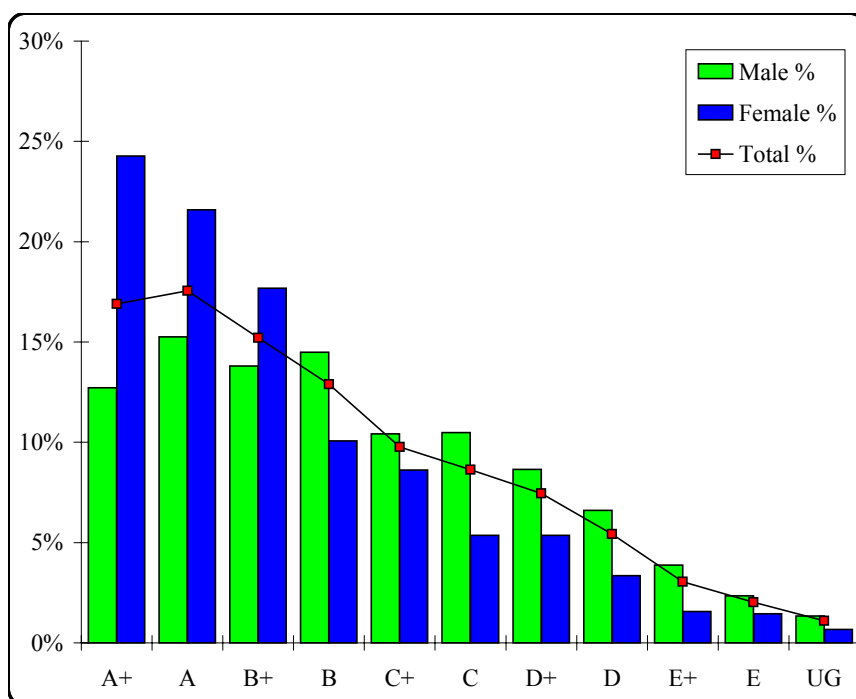
# Outdoor and Environmental Studies

## Graded Assessment 1 COURSEWORK UNIT 3

Table of Grade Distributions: male, female and all students assessed

GRADE	A+	A	B+	B	C+	C	D+	D	E+	E	UG	Total
Male	200	240	217	228	164	165	136	104	61	37	21	1573
Male %	13%	15%	14%	14%	10%	10%	9%	7%	4%	2%	1%	100%
Female	217	193	158	90	77	48	48	30	14	13	6	894
Female %	24%	22%	18%	10%	9%	5%	5%	3%	2%	1%	1%	100%
Total	417	433	375	318	241	213	184	134	75	50	27	2467
Total %	17%	18%	15%	13%	10%	9%	7%	5%	3%	2%	1%	100%
Cumul %	17%	34%	50%	63%	72%	81%	88%	94%	97%	99%	100%	
Scaling Points	100–86	85–77	76–70	69–64	63–59	58–53	52–46	45–39	38–29	28–15	14–0	Max 100

Summary Statistics:	
Mean	67.60
Std. dev.	18.03
Median	B
Not Assessed:	
Male	18
Male %	1%
Female	19
Female %	2%
All	37
All %	1%
Total Enrolments:	
Male	1591
Female	913
All	2504



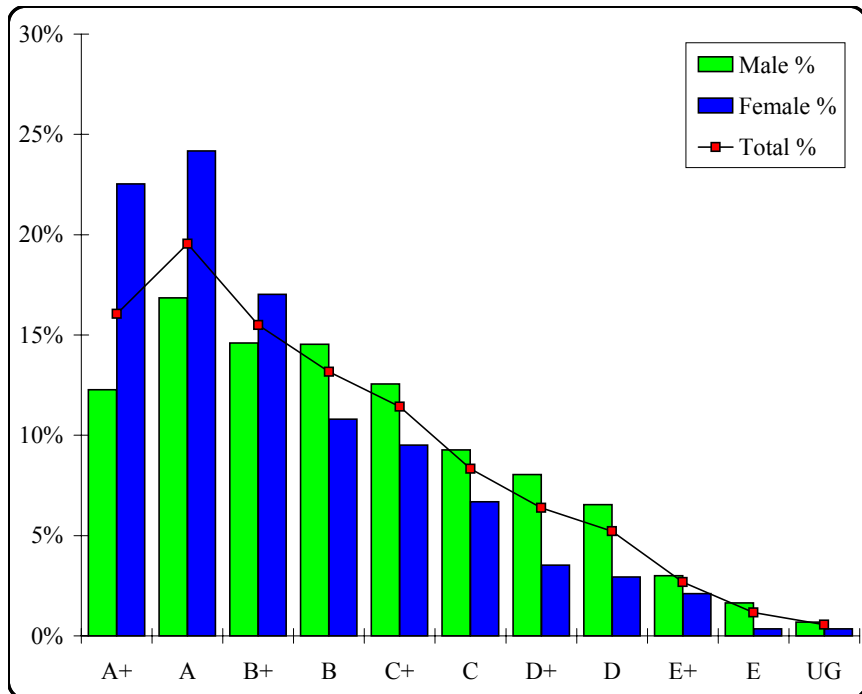
# Outdoor and Environmental Studies

## Graded Assessment 2 COURSEWORK UNIT 4

Table of Grade Distributions: male, female and all students assessed

GRADE	A+	A	B+	B	C+	C	D+	D	E+	E	UG	Total
Male	180	247	214	213	184	136	118	96	44	24	10	1466
Male %	12%	17%	15%	15%	13%	9%	8%	7%	3%	2%	1%	100%
Female	192	206	145	92	81	57	30	25	18	3	3	852
Female %	23%	24%	17%	11%	10%	7%	4%	3%	2%	0%	0%	100%
Total	372	453	359	305	265	193	148	121	62	27	13	2318
Total %	16%	20%	15%	13%	11%	8%	6%	5%	3%	1%	1%	100%
Cumul %	16%	36%	51%	64%	76%	84%	90%	96%	98%	99%	100%	
Scaling Points	100–89	88–79	78–71	70–64	63–58	57–52	51–45	44–37	36–26	25–10	9–0	Max 100

Summary Statistics:	
Mean	69.48
Std. dev.	18.44
Median	B+
Not Assessed:	
Male	125
Male %	8%
Female	61
Female %	7%
All	186
All %	7%
Total Enrolments:	
Male	1591
Female	913
All	2504



# Outdoor and Environmental Studies

## Graded Assessment 3 WRITTEN EXAMINATION

Table of Grade Distributions: male, female and all students assessed

GRADE	A+	A	B+	B	C+	C	D+	D	E+	E	UG	Total
Male	90	145	161	209	217	177	169	139	64	16	19	1406
Male %	6%	10%	11%	15%	15%	13%	12%	10%	5%	1%	1%	100%
Female	106	118	130	119	119	97	75	47	16	6	3	836
Female %	13%	14%	16%	14%	14%	12%	9%	6%	2%	1%	0%	100%
Total	196	263	291	328	336	274	244	186	80	22	22	2242
Total %	9%	12%	13%	15%	15%	12%	11%	8%	4%	1%	1%	100%
Cumul %	9%	20%	33%	48%	63%	75%	86%	94%	98%	99%	100%	
Scaling Points	172-136	135-124	123-111	110-98	97-84	83-72	71-57	56-38	37-26	25-14	13-0	Max 172

Summary Statistics:	
Mean	93.63
Std. dev.	32.31
Median	C+
Not Assessed:	
Male	185
Male %	12%
Female	77
Female %	8%
All	262
All %	10%
Total Enrolments:	
Male	1591
Female	913
All	2504

