

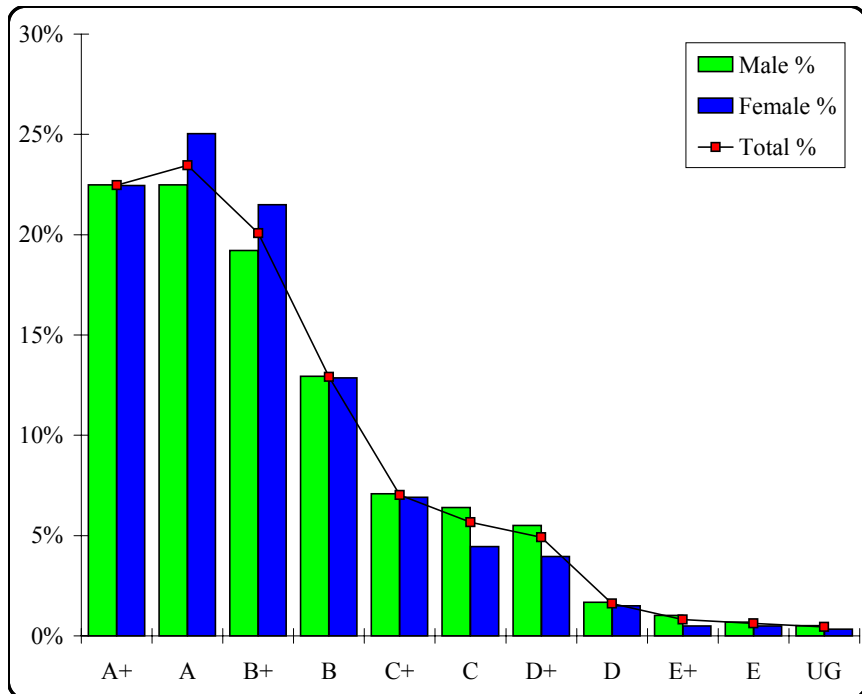
Specialist Mathematics

Graded Assessment 1 COURSEWORK UNIT 3/4

Table of Grade Distributions: male, female and all students assessed

GRADE	A+	A	B+	B	C+	C	D+	D	E+	E	UG	Total
Male	886	886	757	510	279	252	217	66	40	27	20	3940
Male %	22%	22%	19%	13%	7%	6%	6%	2%	1%	1%	1%	100%
Female	539	601	516	309	166	107	95	36	12	12	8	2401
Female %	22%	25%	21%	13%	7%	4%	4%	1%	0%	0%	0%	100%
Total	1425	1487	1273	819	445	359	312	102	52	39	28	6341
Total %	22%	23%	20%	13%	7%	6%	5%	2%	1%	1%	0%	100%
Cumul %	22%	46%	66%	79%	86%	92%	97%	98%	99%	100%	100%	
Scaling Points	100–88	87–76	75–65	64–57	56–52	51–47	46–40	39–32	31–19	18–10	9–0	Max 100

Summary Statistics:	
Mean	71.77
Std. dev.	18.21
Median	B+
Not Assessed:	
Male	21
Male %	1%
Female	10
Female %	0%
All	31
All %	0%
Total Enrolments:	
Male	3961
Female	2411
All	6372



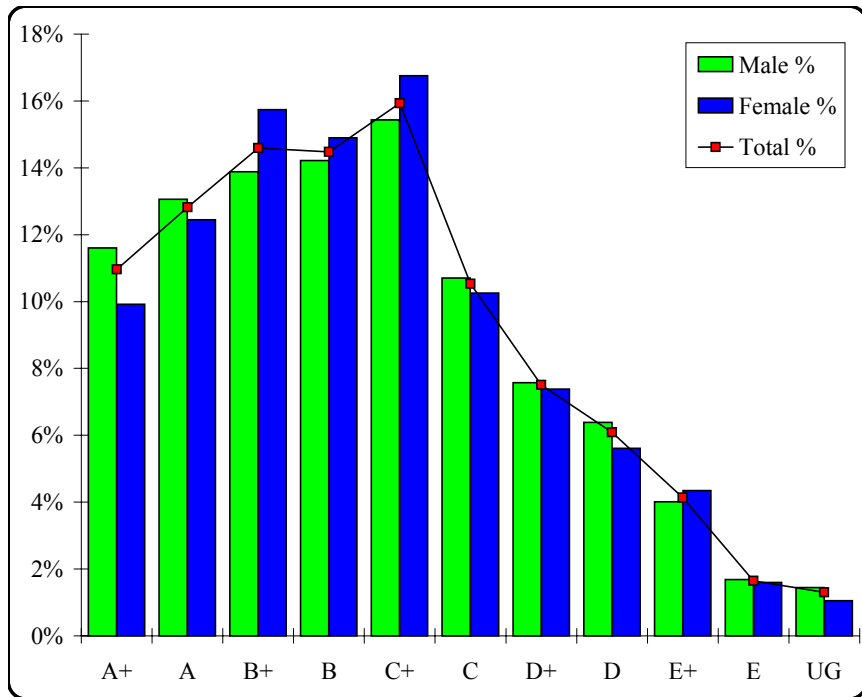
Specialist Mathematics

Graded Assessment 2 WRITTEN EXAMINATION 1

Table of Grade Distributions: male, female and all students assessed

GRADE	A+	A	B+	B	C+	C	D+	D	E+	E	UG	Total
Male	449	505	537	550	597	414	293	247	155	65	56	3868
Male %	12%	13%	14%	14%	15%	11%	8%	6%	4%	2%	1%	100%
Female	235	295	373	353	397	243	175	133	103	38	25	2370
Female %	10%	12%	16%	15%	17%	10%	7%	6%	4%	2%	1%	100%
Total	684	800	910	903	994	657	468	380	258	103	81	6238
Total %	11%	13%	15%	14%	16%	11%	8%	6%	4%	2%	1%	100%
Cumul %	11%	24%	38%	53%	69%	79%	87%	93%	97%	99%	100%	
Scaling Points	100–85	84–76	75–66	65–55	54–44	43–36	35–29	28–24	23–18	17–14	13–0	Max 100

Summary Statistics:	
Mean	56.18
Std. dev.	22.01
Median	B
Not Assessed:	
Male	93
Male %	2%
Female	41
Female %	2%
All	134
All %	2%
Total Enrolments:	
Male	3961
Female	2411
All	6372



Specialist Mathematics

Graded Assessment 3 WRITTEN EXAMINATION 2

Table of Grade Distributions: male, female and all students assessed

GRADE	A+	A	B+	B	C+	C	D+	D	E+	E	UG	Total
Male	384	445	424	491	560	462	367	290	191	129	123	3866
Male %	10%	12%	11%	13%	14%	12%	9%	8%	5%	3%	3%	100%
Female	200	286	313	335	380	306	210	138	89	54	59	2370
Female %	8%	12%	13%	14%	16%	13%	9%	6%	4%	2%	2%	100%
Total	584	731	737	826	940	768	577	428	280	183	182	6236
Total %	9%	12%	12%	13%	15%	12%	9%	7%	4%	3%	3%	100%
Cumul %	9%	21%	33%	46%	61%	74%	83%	90%	94%	97%	100%	
Scaling Points	120–90	89–78	77–67	66–57	56–45	44–34	33–24	23–16	15–10	9–5	4–0	Max 120

Summary Statistics:	
Mean	52.76
Std. dev.	27.08
Median	C+
Not Assessed:	
Male	95
Male %	2%
Female	41
Female %	2%
All	136
All %	2%
Total Enrolments:	
Male	3961
Female	2411
All	6372

