

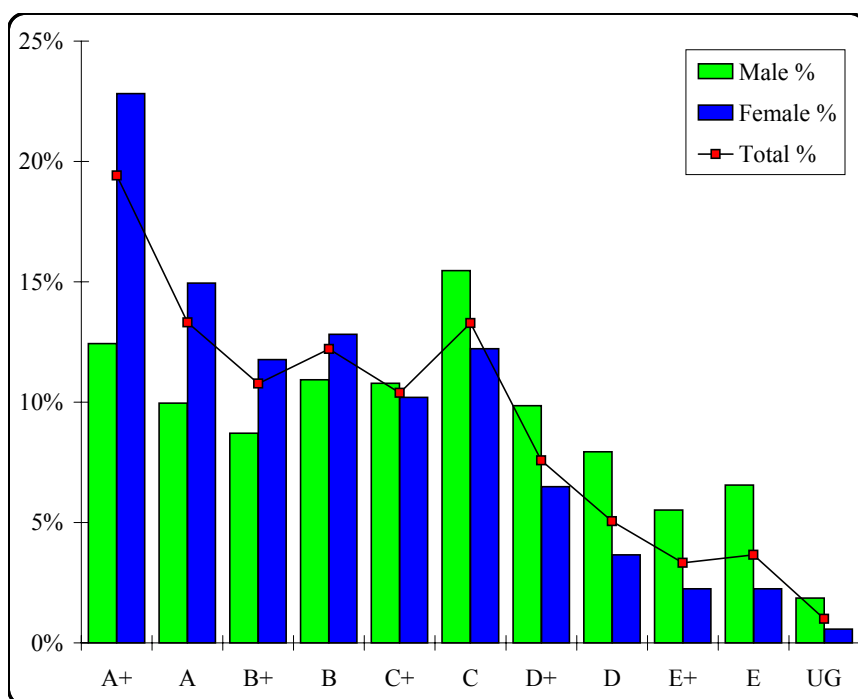
Studio Arts

Graded Assessment 1 SCHOOL-ASSESSED TASK 1

Table of Grade Distributions: male, female and all students assessed

GRADE	A+	A	B+	B	C+	C	D+	D	E+	E	UG	Total
Male	241	193	169	212	209	300	191	154	107	127	36	1939
Male %	12%	10%	9%	11%	11%	15%	10%	8%	6%	7%	2%	100%
Female	911	597	470	512	407	488	259	146	90	90	23	3993
Female %	23%	15%	12%	13%	10%	12%	6%	4%	2%	2%	1%	100%
Total	1152	790	639	724	616	788	450	300	197	217	59	5932
Total %	19%	13%	11%	12%	10%	13%	8%	5%	3%	4%	1%	100%
Cumul %	19%	33%	44%	56%	66%	79%	87%	92%	95%	99%	100%	
Scaling Points	30–26	25–23	22–21	20–19	18–17	16–14	13–12	11–10	9–8	7–6	5–0	Max 30

Summary Statistics:	
Mean	19.15
Std. dev.	6.42
Median	B
Not Assessed:	
Male	286
Male %	13%
Female	372
Female %	9%
All	658
All %	10%
Total Enrolments:	
Male	2225
Female	4365
All	6590



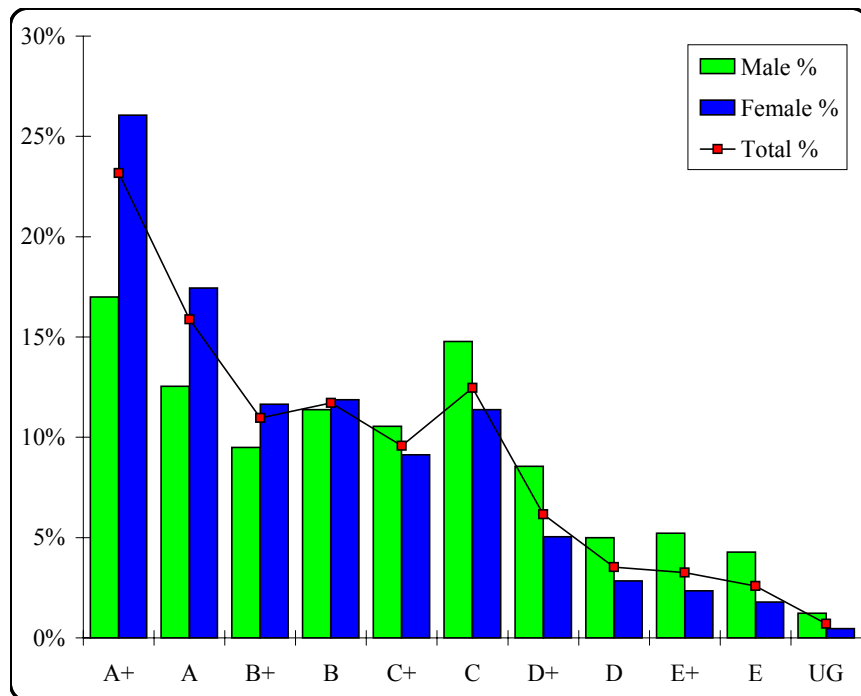
Studio Arts

Graded Assessment 2 SCHOOL-ASSESSED TASK 2

Table of Grade Distributions: male, female and all students assessed

GRADE	A+	A	B+	B	C+	C	D+	D	E+	E	UG	Total
Male	306	226	171	205	190	266	154	90	94	77	22	1801
Male %	17%	13%	9%	11%	11%	15%	9%	5%	5%	4%	1%	100%
Female	1003	671	448	457	351	438	194	109	90	69	18	3848
Female %	26%	17%	12%	12%	9%	11%	5%	3%	2%	2%	0%	100%
Total	1309	897	619	662	541	704	348	199	184	146	40	5649
Total %	23%	16%	11%	12%	10%	12%	6%	4%	3%	3%	1%	100%
Cumul %	23%	39%	50%	62%	71%	84%	90%	93%	97%	99%	100%	
Scaling Points	30–26	25–23	22–21	20–19	18–17	16–14	13–12	11–10	9–8	7–6	5–0	Max 30

Summary Statistics:	
Mean	20.11
Std. dev.	6.35
Median	B+
Not Assessed:	
Male	424
Male %	19%
Female	517
Female %	12%
All	941
All %	14%
Total Enrolments:	
Male	2225
Female	4365
All	6590



Studio Arts

Graded Assessment 3 WRITTEN EXAMINATION

Table of Grade Distributions: male, female and all students assessed

GRADE	A+	A	B+	B	C+	C	D+	D	E+	E	UG	Total
Male	36	87	156	214	251	259	270	198	143	101	59	1774
Male %	2%	5%	9%	12%	14%	15%	15%	11%	8%	6%	3%	100%
Female	259	393	470	544	643	537	418	276	142	82	22	3786
Female %	7%	10%	12%	14%	17%	14%	11%	7%	4%	2%	1%	100%
Total	295	480	626	758	894	796	688	474	285	183	81	5560
Total %	5%	9%	11%	14%	16%	14%	12%	9%	5%	3%	1%	100%
Cumul %	5%	14%	25%	39%	55%	69%	82%	90%	95%	99%	100%	
Scaling Points	100–85	84–76	75–68	67–60	59–51	50–42	41–33	32–25	24–18	17–10	9–0	Max 100

Summary Statistics:	
Mean	52.40
Std. dev.	20.41
Median	C+
Not Assessed:	
Male	451
Male %	20%
Female	579
Female %	13%
All	1030
All %	16%
Total Enrolments:	
Male	2225
Female	4365
All	6590

