

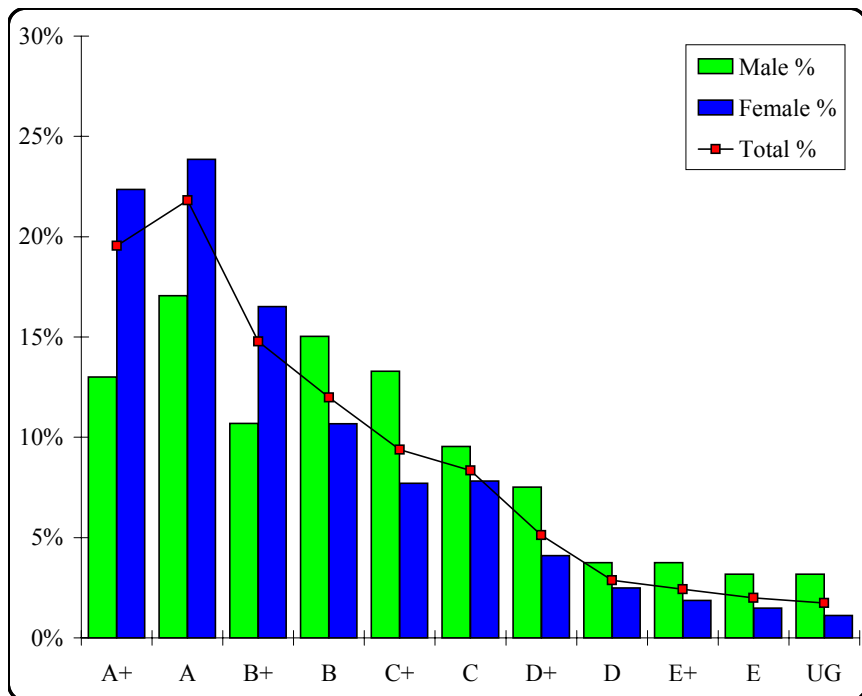
# Theatre Studies

## Graded Assessment 1 COURSEWORK UNIT 3/4

Table of Grade Distributions: male, female and all students assessed

GRADE	A+	A	B+	B	C+	C	D+	D	E+	E	UG	Total
Male	45	59	37	52	46	33	26	13	13	11	11	346
Male %	13%	17%	11%	15%	13%	10%	8%	4%	4%	3%	3%	100%
Female	180	192	133	86	62	63	33	20	15	12	9	805
Female %	22%	24%	17%	11%	8%	8%	4%	2%	2%	1%	1%	100%
Total	225	251	170	138	108	96	59	33	28	23	20	1151
Total %	20%	22%	15%	12%	9%	8%	5%	3%	2%	2%	2%	100%
Cumul %	20%	41%	56%	68%	77%	86%	91%	94%	96%	98%	100%	
Scaling Points	150–135	134–121	120–110	109–100	99–90	89–76	75–60	59–47	46–34	33–19	18–0	Max 150

Summary Statistics:	
Mean	107.68
Std. dev.	31.18
Median	B+
Not Assessed:	
Male	14
Male %	4%
Female	15
Female %	2%
All	29
All %	2%
Total Enrolments:	
Male	360
Female	820
All	1180



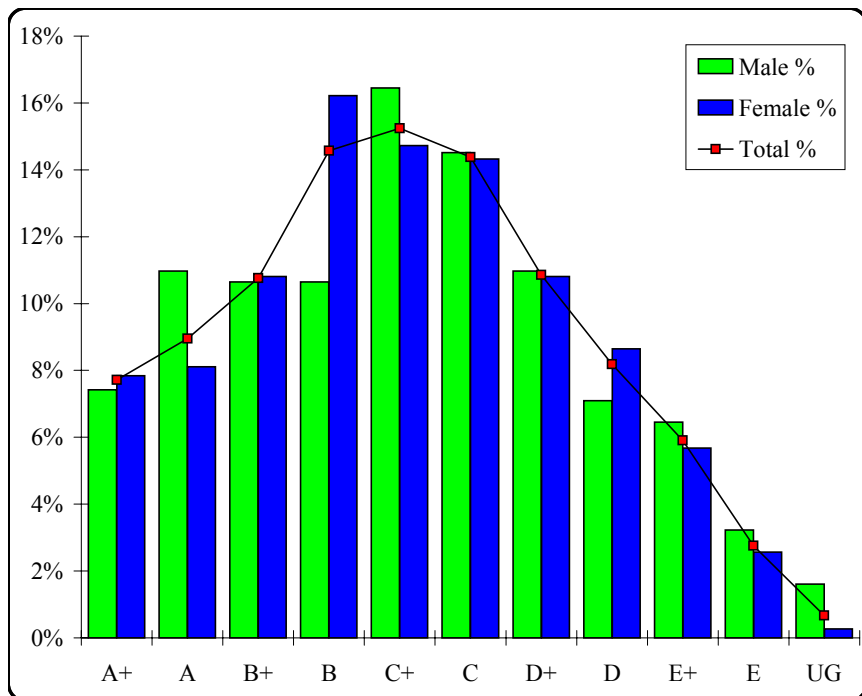
# Theatre Studies

## Graded Assessment 2 MONOLOGUE PERFORMANCE EXAMINATION

Table of Grade Distributions: male, female and all students assessed

GRADE	A+	A	B+	B	C+	C	D+	D	E+	E	UG	Total
Male	23	34	33	33	51	45	34	22	20	10	5	310
Male %	7%	11%	11%	11%	16%	15%	11%	7%	6%	3%	2%	100%
Female	58	60	80	120	109	106	80	64	42	19	2	740
Female %	8%	8%	11%	16%	15%	14%	11%	9%	6%	3%	0%	100%
Total	81	94	113	153	160	151	114	86	62	29	7	1050
Total %	8%	9%	11%	15%	15%	14%	11%	8%	6%	3%	1%	100%
Cumul %	8%	17%	27%	42%	57%	72%	82%	91%	97%	99%	100%	
Scaling Points	105–102	101–97	96–92	91–84	83–77	76–68	67–61	60–53	52–31	30–10	9–0	Max 105

Summary Statistics:	
Mean	77.15
Std. dev.	19.74
Median	C+
Not Assessed:	
Male	50
Male %	14%
Female	80
Female %	10%
All	130
All %	11%
Total Enrolments:	
Male	360
Female	820
All	1180



# Theatre Studies

## Graded Assessment 3 WRITTEN EXAMINATION

Table of Grade Distributions: male, female and all students assessed

GRADE	A+	A	B+	B	C+	C	D+	D	E+	E	UG	Total
Male	19	23	33	30	34	52	48	35	27	9	3	313
Male %	6%	7%	11%	10%	11%	17%	15%	11%	9%	3%	1%	100%
Female	64	85	97	110	123	99	72	56	29	11	4	750
Female %	9%	11%	13%	15%	16%	13%	10%	7%	4%	1%	1%	100%
Total	83	108	130	140	157	151	120	91	56	20	7	1063
Total %	8%	10%	12%	13%	15%	14%	11%	9%	5%	2%	1%	100%
Cumul %	8%	18%	30%	43%	58%	72%	84%	92%	97%	99%	100%	
Scaling Points	100–88	87–81	80–75	74–69	68–61	60–52	51–43	42–32	31–21	20–12	11–0	Max 100

Summary Statistics:	
Mean	62.43
Std. dev.	19.42
Median	C+
Not Assessed:	
Male	47
Male %	13%
Female	70
Female %	9%
All	117
All %	10%
Total Enrolments:	
Male	360
Female	820
All	1180

