

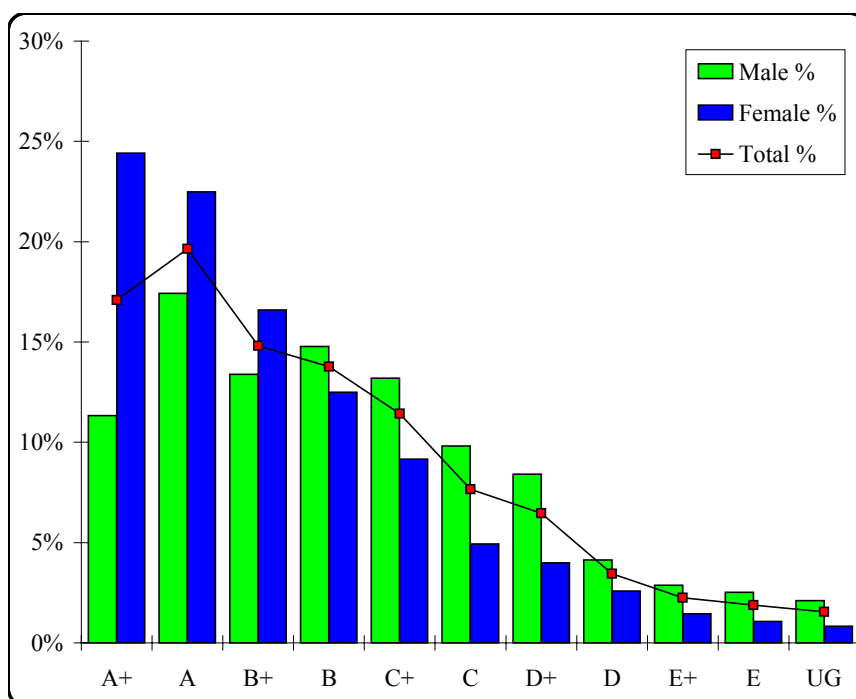
# Visual Communication and Design

## Graded Assessment 1 COURSEWORK UNIT 3

Table of Grade Distributions: male, female and all students assessed

GRADE	A+	A	B+	B	C+	C	D+	D	E+	E	UG	Total
Male	419	644	495	546	488	363	311	153	106	93	78	3696
Male %	11%	17%	13%	15%	13%	10%	8%	4%	3%	3%	2%	100%
Female	709	653	482	363	266	143	116	75	42	31	24	2904
Female %	24%	22%	17%	13%	9%	5%	4%	3%	1%	1%	1%	100%
Total	1128	1297	977	909	754	506	427	228	148	124	102	6600
Total %	17%	20%	15%	14%	11%	8%	6%	3%	2%	2%	2%	100%
Cumul %	17%	37%	52%	65%	77%	84%	91%	94%	97%	98%	100%	
Scaling Points	100–89	88–79	78–72	71–64	63–55	54–47	46–37	36–29	28–20	19–10	9–0	Max 100

Summary Statistics:	
Mean	68.29
Std. dev.	21.37
Median	B+
Not Assessed:	
Male	170
Male %	4%
Female	125
Female %	4%
All	295
All %	4%
Total Enrolments:	
Male	3866
Female	3029
All	6895



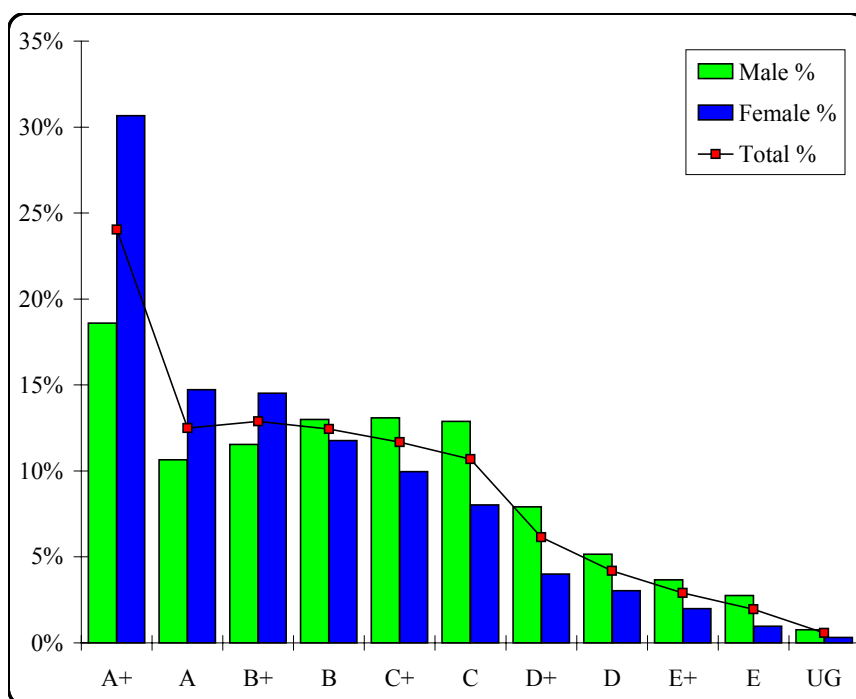
# Visual Communication and Design

## Graded Assessment 2 SCHOOL-ASSESSED TASK

Table of Grade Distributions: male, female and all students assessed

GRADE	A+	A	B+	B	C+	C	D+	D	E+	E	UG	Total
Male	628	360	390	439	442	435	267	174	124	93	26	3378
Male %	19%	11%	12%	13%	13%	13%	8%	5%	4%	3%	1%	100%
Female	849	408	402	326	276	222	111	84	55	27	9	2769
Female %	31%	15%	15%	12%	10%	8%	4%	3%	2%	1%	0%	100%
Total	1477	768	792	765	718	657	378	258	179	120	35	6147
Total %	24%	12%	13%	12%	12%	11%	6%	4%	3%	2%	1%	100%
Cumul %	24%	37%	49%	62%	74%	84%	90%	95%	97%	99%	100%	
Scaling Points	50-43	42-39	38-35	34-31	30-27	26-23	22-19	18-15	14-11	10-7	6-0	Max 50

Summary Statistics:	
Mean	33.54
Std. dev.	10.75
Median	B
Not Assessed:	
Male	488
Male %	13%
Female	260
Female %	9%
All	748
All %	11%
Total Enrolments:	
Male	3866
Female	3029
All	6895



# Visual Communication and Design

## Graded Assessment 3 WRITTEN EXAMINATION

Table of Grade Distributions: male, female and all students assessed

GRADE	A+	A	B+	B	C+	C	D+	D	E+	E	UG	Total
Male	149	210	354	473	647	635	464	231	114	83	15	3375
Male %	4%	6%	10%	14%	19%	19%	14%	7%	3%	2%	0%	100%
Female	234	312	360	452	498	354	293	126	70	42	8	2749
Female %	9%	11%	13%	16%	18%	13%	11%	5%	3%	2%	0%	100%
Total	383	522	714	925	1145	989	757	357	184	125	23	6124
Total %	6%	9%	12%	15%	19%	16%	12%	6%	3%	2%	0%	100%
Cumul %	6%	15%	26%	42%	60%	76%	89%	95%	98%	100%	100%	
Scaling Points	180–160	159–151	150–142	141–131	130–117	116–100	99–81	80–65	64–49	48–25	24–0	Max 180

Summary Statistics:	
Mean	119.69
Std. dev.	30.33
Median	C+
Not Assessed:	
Male	491
Male %	13%
Female	280
Female %	9%
All	771
All %	11%
Total Enrolments:	
Male	3866
Female	3029
All	6895

