

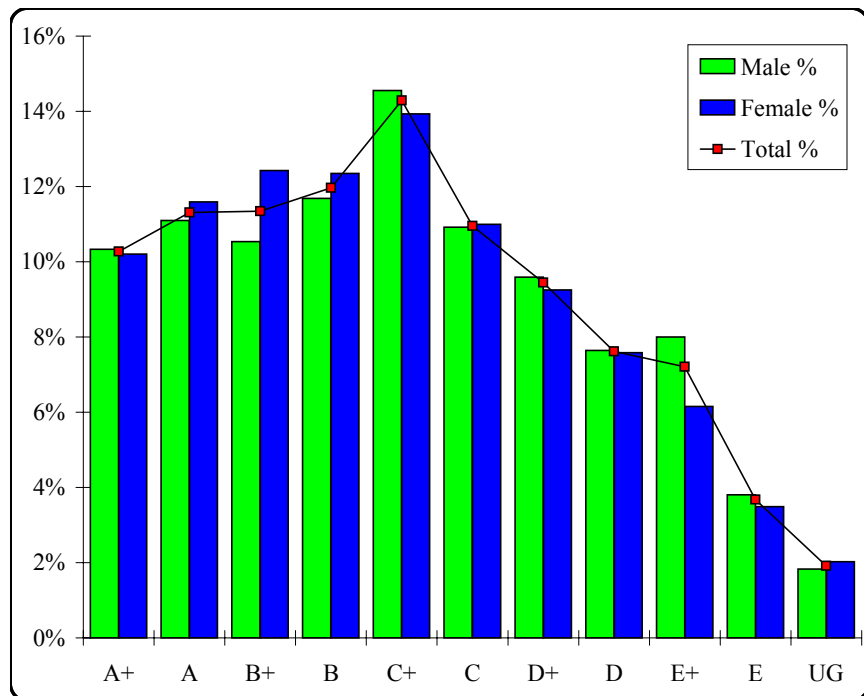
# Accounting

## Graded Assessment 1 WRITTEN EXAMINATION 1

Table of Grade Distributions: male, female and all students assessed

GRADE	A+	A	B+	B	C+	C	D+	D	E+	E	UG	Total
Male	350	376	357	396	493	370	325	259	271	129	62	3388
Male %	10%	11%	11%	12%	15%	11%	10%	8%	8%	4%	2%	100%
Female	257	292	313	311	351	277	233	191	155	88	51	2519
Female %	10%	12%	12%	12%	14%	11%	9%	8%	6%	3%	2%	100%
Total	607	668	670	707	844	647	558	450	426	217	113	5907
Total %	10%	11%	11%	12%	14%	11%	9%	8%	7%	4%	2%	100%
Cumul %	10%	22%	33%	45%	59%	70%	80%	87%	94%	98%	100%	
Scaling Points	180–153	152–142	141–130	129–115	114–97	96–82	81–66	65–49	48–32	31–17	16–0	Max 180

Summary Statistics:	
Mean	103.25
Std. dev.	40.86
Median	C+
Not Assessed:	
Male	72
Male %	2%
Female	58
Female %	2%
All	130
All %	2%
Total Enrolments:	
Male	3460
Female	2577
All	6037



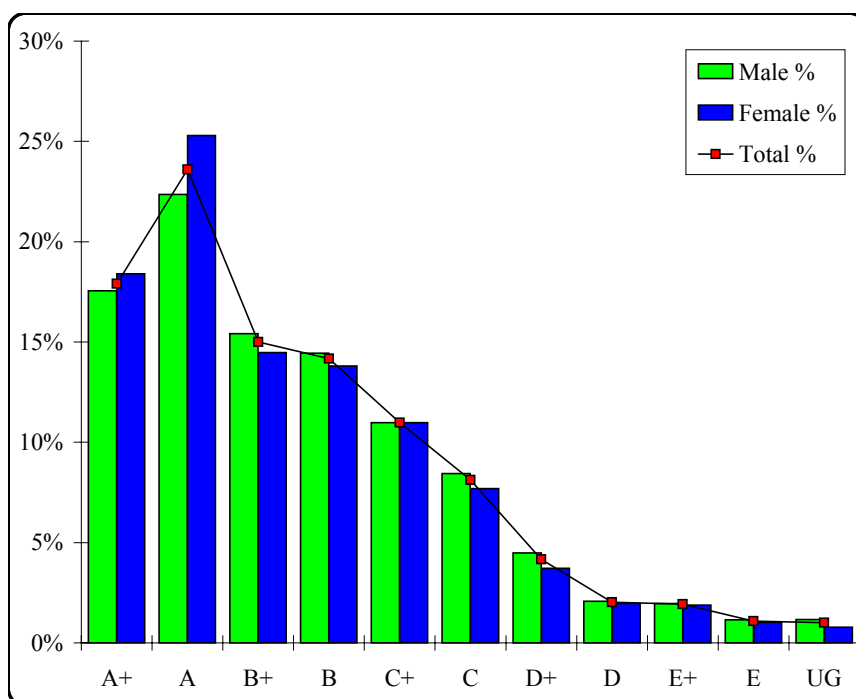
# Accounting

## Graded Assessment 2 COURSEWORK UNIT 3/4

Table of Grade Distributions: male, female and all students assessed

GRADE	A+	A	B+	B	C+	C	D+	D	E+	E	UG	Total
Male	599	763	526	493	375	288	153	71	67	39	40	3414
Male %	18%	22%	15%	14%	11%	8%	4%	2%	2%	1%	1%	100%
Female	469	645	369	352	280	196	95	50	48	26	20	2550
Female %	18%	25%	14%	14%	11%	8%	4%	2%	2%	1%	1%	100%
Total	1068	1408	895	845	655	484	248	121	115	65	60	5964
Total %	18%	24%	15%	14%	11%	8%	4%	2%	2%	1%	1%	100%
Cumul %	18%	42%	57%	71%	82%	90%	94%	96%	98%	99%	100%	
Scaling Points	200–181	180–159	158–143	142–124	123–105	104–88	87–74	73–63	62–40	39–18	17–0	Max 200

Summary Statistics:	
Mean	142.07
Std. dev.	40.38
Median	B+
Not Assessed:	
Male	46
Male %	1%
Female	27
Female %	1%
All	73
All %	1%
Total Enrolments:	
Male	3460
Female	2577
All	6037



# Accounting

## Graded Assessment 3 WRITTEN EXAMINATION 2

Table of Grade Distributions: male, female and all students assessed

GRADE	A+	A	B+	B	C+	C	D+	D	E+	E	UG	Total
Male	326	391	412	434	440	334	270	236	203	88	133	3267
Male %	10%	12%	13%	13%	13%	10%	8%	7%	6%	3%	4%	100%
Female	241	296	334	347	322	258	221	151	133	66	79	2448
Female %	10%	12%	14%	14%	13%	11%	9%	6%	5%	3%	3%	100%
Total	567	687	746	781	762	592	491	387	336	154	212	5715
Total %	10%	12%	13%	14%	13%	10%	9%	7%	6%	3%	4%	100%
Cumul %	10%	22%	35%	49%	62%	72%	81%	88%	94%	96%	100%	
Scaling Points	180–156	155–142	141–128	127–112	111–94	93–76	75–57	56–41	40–26	25–18	17–0	Max 180

Summary Statistics:	
Mean	101.99
Std. dev.	43.86
Median	C+
Not Assessed:	
Male	193
Male %	6%
Female	129
Female %	5%
All	322
All %	5%
Total Enrolments:	
Male	3460
Female	2577
All	6037

