

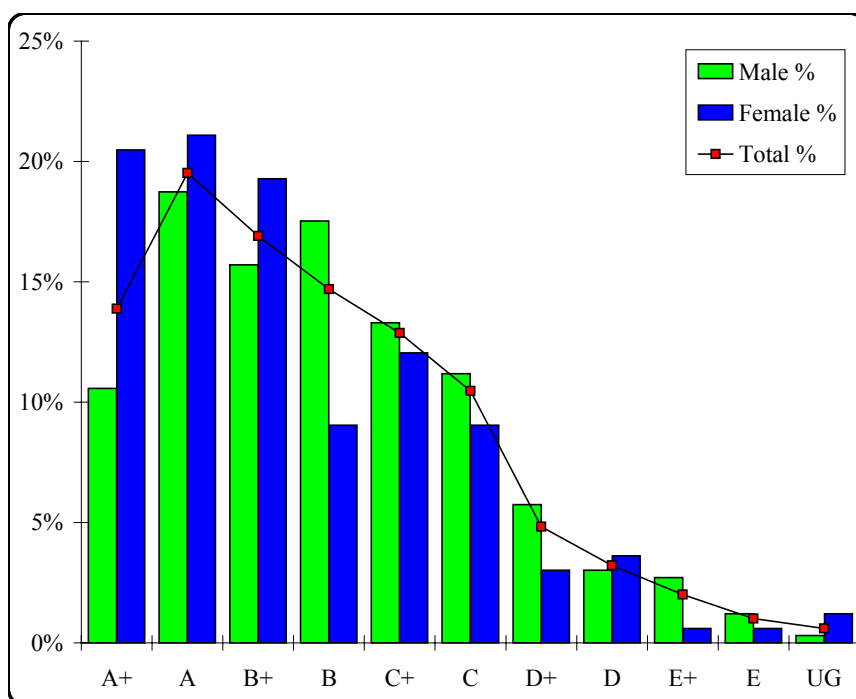
Agricultural and Horticultural Studies

Graded Assessment 1 COURSEWORK UNIT 3

Table of Grade Distributions: male, female and all students assessed

GRADE	A+	A	B+	B	C+	C	D+	D	E+	E	UG	Total
Male	35	62	52	58	44	37	19	10	9	4	1	331
Male %	11%	19%	16%	18%	13%	11%	6%	3%	3%	1%	0%	100%
Female	34	35	32	15	20	15	5	6	1	1	2	166
Female %	20%	21%	19%	9%	12%	9%	3%	4%	1%	1%	1%	100%
Total	69	97	84	73	64	52	24	16	10	5	3	497
Total %	14%	20%	17%	15%	13%	10%	5%	3%	2%	1%	1%	100%
Cumul %	14%	33%	50%	65%	78%	88%	93%	96%	98%	99%	100%	
Scaling Points	100–89	88–77	76–69	68–63	62–57	56–51	50–40	39–29	28–19	18–10	9–0	Max 100

Summary Statistics:	
Mean	68.37
Std. dev.	18.27
Median	B+
Not Assessed:	
Male	14
Male %	4%
Female	2
Female %	1%
All	16
All %	3%
Total Enrolments:	
Male	345
Female	168
All	513



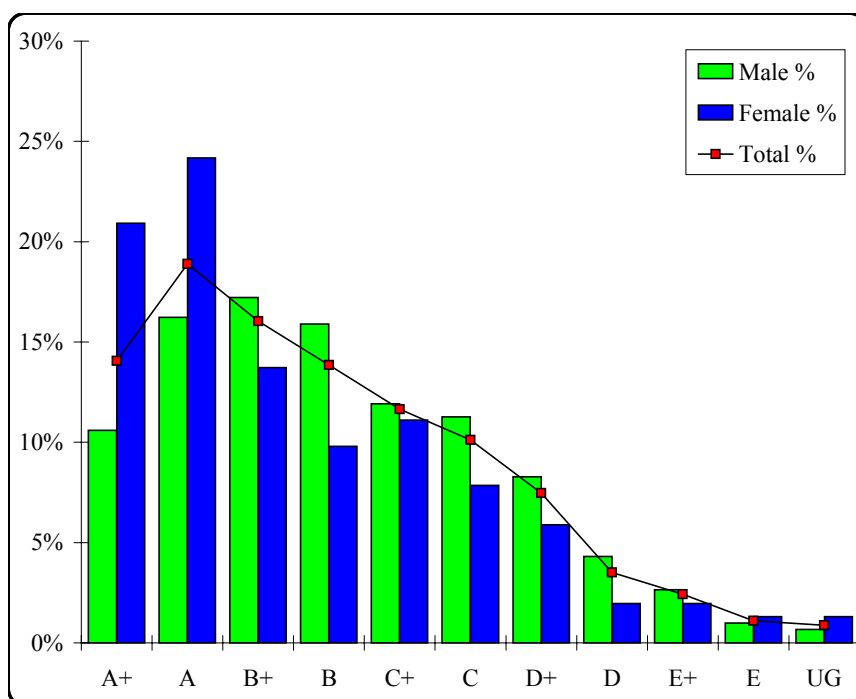
Agricultural and Horticultural Studies

Graded Assessment 2 COURSEWORK UNIT 4

Table of Grade Distributions: male, female and all students assessed

GRADE	A+	A	B+	B	C+	C	D+	D	E+	E	UG	Total
Male	32	49	52	48	36	34	25	13	8	3	2	302
Male %	11%	16%	17%	16%	12%	11%	8%	4%	3%	1%	1%	100%
Female	32	37	21	15	17	12	9	3	3	2	2	153
Female %	21%	24%	14%	10%	11%	8%	6%	2%	2%	1%	1%	100%
Total	64	86	73	63	53	46	34	16	11	5	4	455
Total %	14%	19%	16%	14%	12%	10%	7%	4%	2%	1%	1%	100%
Cumul %	14%	33%	49%	63%	75%	85%	92%	96%	98%	99%	100%	
Scaling Points	100–90	89–79	78–71	70–65	64–60	59–54	53–47	46–40	39–33	32–15	14–0	Max 100

Summary Statistics:	
Mean	70.00
Std. dev.	17.16
Median	B
Not Assessed:	
Male	43
Male %	12%
Female	15
Female %	9%
All	58
All %	11%
Total Enrolments:	
Male	345
Female	168
All	513



Agricultural and Horticultural Studies

Graded Assessment 3 WRITTEN EXAMINATION

Table of Grade Distributions: male, female and all students assessed

GRADE	A+	A	B+	B	C+	C	D+	D	E+	E	UG	Total
Male	20	23	32	48	43	36	36	19	15	11	8	291
Male %	7%	8%	11%	16%	15%	12%	12%	7%	5%	4%	3%	100%
Female	20	20	22	15	23	15	11	9	8	4	2	149
Female %	13%	13%	15%	10%	15%	10%	7%	6%	5%	3%	1%	100%
Total	40	43	54	63	66	51	47	28	23	15	10	440
Total %	9%	10%	12%	14%	15%	12%	11%	6%	5%	3%	2%	100%
Cumul %	9%	19%	31%	45%	60%	72%	83%	89%	94%	98%	100%	
Scaling Points	200–125	124–111	110–96	95–83	82–68	67–58	57–47	46–38	37–30	29–18	17–0	Max 200

Summary Statistics:	
Mean	78.85
Std. dev.	33.09
Median	C+
Not Assessed:	
Male	54
Male %	16%
Female	19
Female %	11%
All	73
All %	14%
Total Enrolments:	
Male	345
Female	168
All	513

