

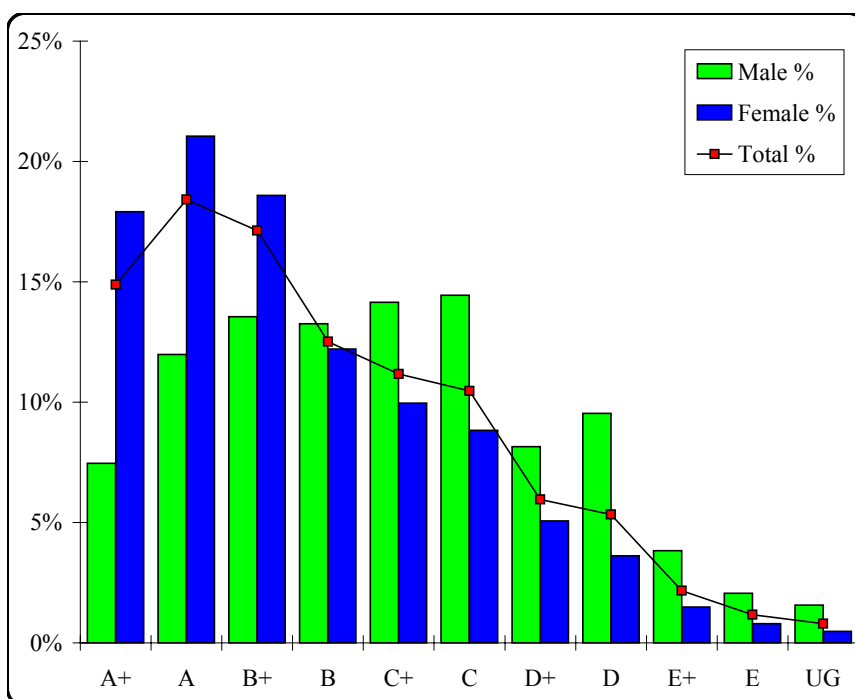
Art

Graded Assessment 1 COURSEWORK UNIT 3/4

Table of Grade Distributions: male, female and all students assessed

GRADE	A+	A	B+	B	C+	C	D+	D	E+	E	UG	Total
Male	76	122	138	135	144	147	83	97	39	21	16	1018
Male %	7%	12%	14%	13%	14%	14%	8%	10%	4%	2%	2%	100%
Female	446	524	463	304	248	220	126	90	37	20	12	2490
Female %	18%	21%	19%	12%	10%	9%	5%	4%	1%	1%	0%	100%
Total	522	646	601	439	392	367	209	187	76	41	28	3508
Total %	15%	18%	17%	13%	11%	10%	6%	5%	2%	1%	1%	100%
Cumul %	15%	33%	50%	63%	74%	85%	91%	96%	98%	99%	100%	
Scaling Points	80–73	72–64	63–56	55–50	49–44	43–36	35–30	29–21	20–13	12–8	7–0	Max 80

Summary Statistics:	
Mean	53.80
Std. dev.	17.20
Median	B+
Not Assessed:	
Male	118
Male %	10%
Female	210
Female %	8%
All	328
All %	9%
Total Enrolments:	
Male	1136
Female	2700
All	3836



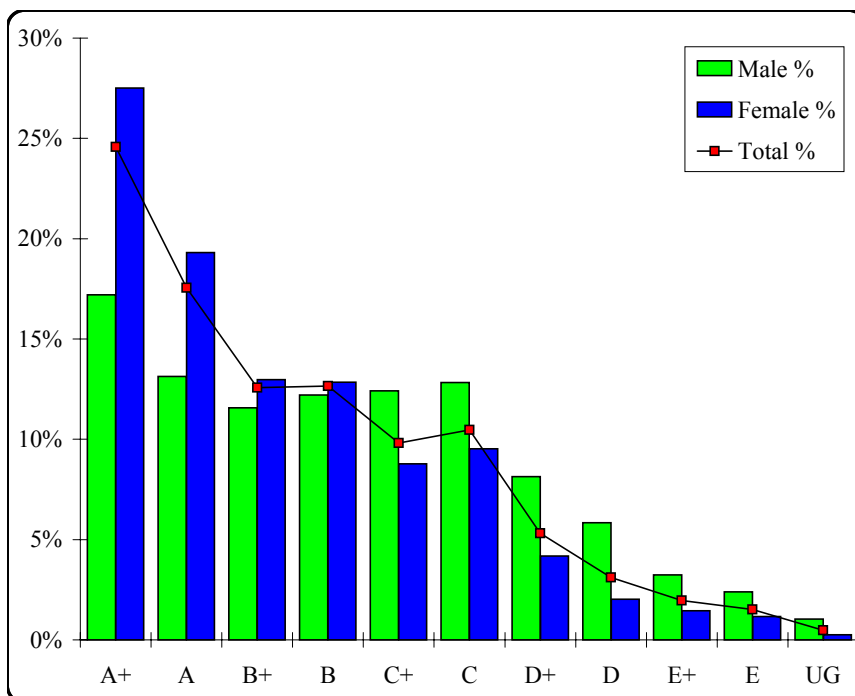
Art

Graded Assessment 2 SCHOOL-ASSESSED TASK

Table of Grade Distributions: male, female and all students assessed

GRADE	A+	A	B+	B	C+	C	D+	D	E+	E	UG	Total
Male	165	126	111	117	119	123	78	56	31	23	10	959
Male %	17%	13%	12%	12%	12%	13%	8%	6%	3%	2%	1%	100%
Female	664	466	313	310	212	230	101	49	35	28	6	2414
Female %	28%	19%	13%	13%	9%	10%	4%	2%	1%	1%	0%	100%
Total	829	592	424	427	331	353	179	105	66	51	16	3373
Total %	25%	18%	13%	13%	10%	10%	5%	3%	2%	2%	0%	100%
Cumul %	25%	42%	55%	67%	77%	88%	93%	96%	98%	100%	100%	
Scaling Points	30–26	25–23	22–21	20–19	18–17	16–14	13–12	11–10	9–8	7–6	5–0	Max 30

Summary Statistics:	
Mean	20.90
Std. dev.	5.97
Median	B+
Not Assessed:	
Male	177
Male %	16%
Female	286
Female %	11%
All	463
All %	12%
Total Enrolments:	
Male	1136
Female	2700
All	3836



Art

Graded Assessment 3 WRITTEN EXAMINATION

Table of Grade Distributions: male, female and all students assessed

GRADE	A+	A	B+	B	C+	C	D+	D	E+	E	UG	Total
Male	26	44	100	123	169	149	110	77	66	39	22	925
Male %	3%	5%	11%	13%	18%	16%	12%	8%	7%	4%	2%	100%
Female	171	295	344	415	454	310	161	119	67	28	8	2372
Female %	7%	12%	15%	17%	19%	13%	7%	5%	3%	1%	0%	100%
Total	197	339	444	538	623	459	271	196	133	67	30	3297
Total %	6%	10%	13%	16%	19%	14%	8%	6%	4%	2%	1%	100%
Cumul %	6%	16%	30%	46%	65%	79%	87%	93%	97%	99%	100%	
Scaling Points	100–87	86–80	79–72	71–63	62–52	51–42	41–34	33–26	25–18	17–10	9–0	Max 100

Summary Statistics:	
Mean	58.43
Std. dev.	20.05
Median	C+
Not Assessed:	
Male	211
Male %	19%
Female	328
Female %	12%
All	539
All %	14%
Total Enrolments:	
Male	1136
Female	2700
All	3836

