

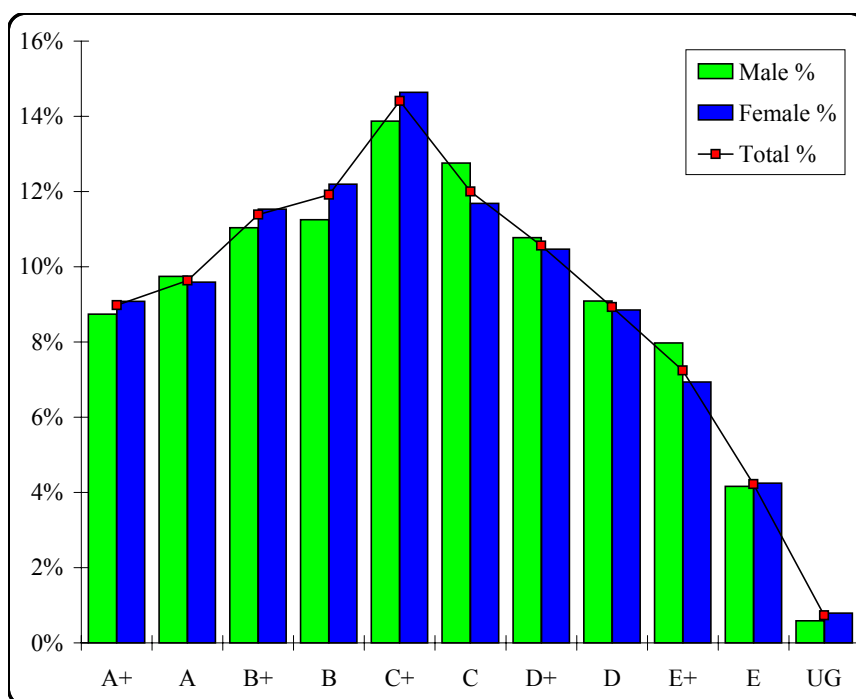
# Biology

## Graded Assessment 1 WRITTEN EXAMINATION 1

Table of Grade Distributions: male, female and all students assessed

GRADE	A+	A	B+	B	C+	C	D+	D	E+	E	UG	Total
Male	296	330	374	381	470	432	365	308	270	141	20	3387
Male %	9%	10%	11%	11%	14%	13%	11%	9%	8%	4%	1%	100%
Female	725	766	921	974	1169	933	836	707	554	339	63	7987
Female %	9%	10%	12%	12%	15%	12%	10%	9%	7%	4%	1%	100%
Total	1021	1096	1295	1355	1639	1365	1201	1015	824	480	83	11374
Total %	9%	10%	11%	12%	14%	12%	11%	9%	7%	4%	1%	100%
Cumul %	9%	19%	30%	42%	56%	68%	79%	88%	95%	99%	100%	
Scaling Points	150–119	118–109	108–99	98–89	88–78	77–68	67–58	57–48	47–36	35–20	19–0	Max 150

Summary Statistics:	
Mean	81.46
Std. dev.	27.49
Median	C+
Not Assessed:	
Male	78
Male %	2%
Female	130
Female %	2%
All	208
All %	2%
Total Enrolments:	
Male	3465
Female	8117
All	11582



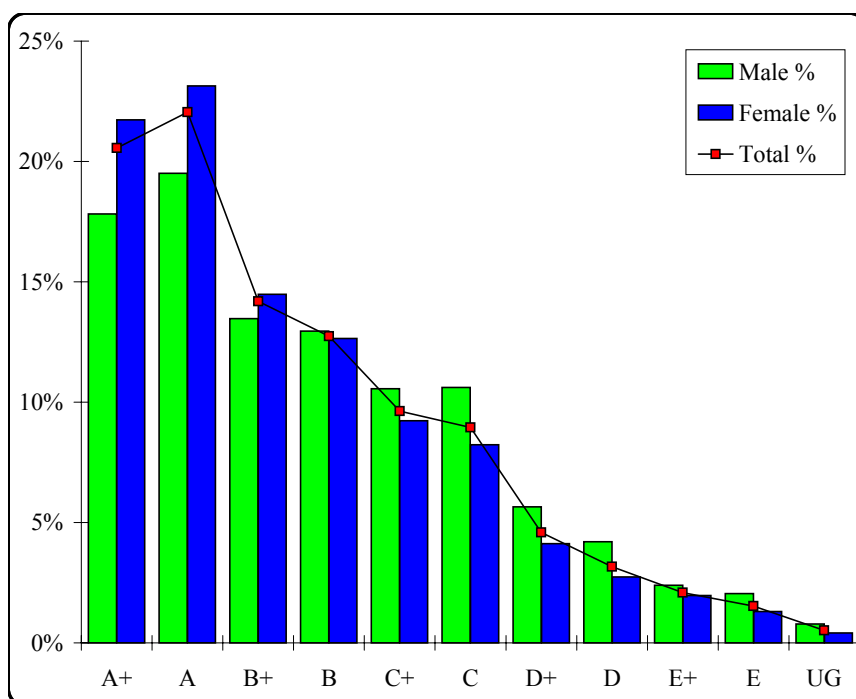
# Biology

## Graded Assessment 2 COURSEWORK UNIT 3/4

Table of Grade Distributions: male, female and all students assessed

GRADE	A+	A	B+	B	C+	C	D+	D	E+	E	UG	Total
Male	611	669	462	444	362	364	194	144	82	70	27	3429
Male %	18%	20%	13%	13%	11%	11%	6%	4%	2%	2%	1%	100%
Female	1749	1862	1166	1018	743	663	332	220	158	105	33	8049
Female %	22%	23%	14%	13%	9%	8%	4%	3%	2%	1%	0%	100%
Total	2360	2531	1628	1462	1105	1027	526	364	240	175	60	11478
Total %	21%	22%	14%	13%	10%	9%	5%	3%	2%	2%	1%	100%
Cumul %	21%	43%	57%	70%	79%	88%	93%	96%	98%	99%	100%	
Scaling Points	200–177	176–159	158–148	147–137	136–128	127–118	117–110	109–99	98–71	70–27	26–0	Max 200

Summary Statistics:	
Mean	150.24
Std. dev.	30.57
Median	B+
Not Assessed:	
Male	36
Male %	1%
Female	68
Female %	1%
All	104
All %	1%
Total Enrolments:	
Male	3465
Female	8117
All	11582



# Biology

## Graded Assessment 3 WRITTEN EXAMINATION 2

Table of Grade Distributions: male, female and all students assessed

GRADE	A+	A	B+	B	C+	C	D+	D	E+	E	UG	Total
Male	308	332	365	377	424	351	370	272	221	190	82	3292
Male %	9%	10%	11%	11%	13%	11%	11%	8%	7%	6%	2%	100%
Female	725	815	870	886	1051	892	782	683	511	424	208	7847
Female %	9%	10%	11%	11%	13%	11%	10%	9%	7%	5%	3%	100%
Total	1033	1147	1235	1263	1475	1243	1152	955	732	614	290	11139
Total %	9%	10%	11%	11%	13%	11%	10%	9%	7%	6%	3%	100%
Cumul %	9%	20%	31%	42%	55%	66%	77%	85%	92%	97%	100%	
Scaling Points	150–113	112–102	101–91	90–81	80–70	69–59	58–50	49–41	40–33	32–24	23–0	Max 150

Summary Statistics:	
Mean	73.56
Std. dev.	28.35
Median	C+
Not Assessed:	
Male	173
Male %	5%
Female	270
Female %	3%
All	443
All %	4%
Total Enrolments:	
Male	3465
Female	8117
All	11582

