

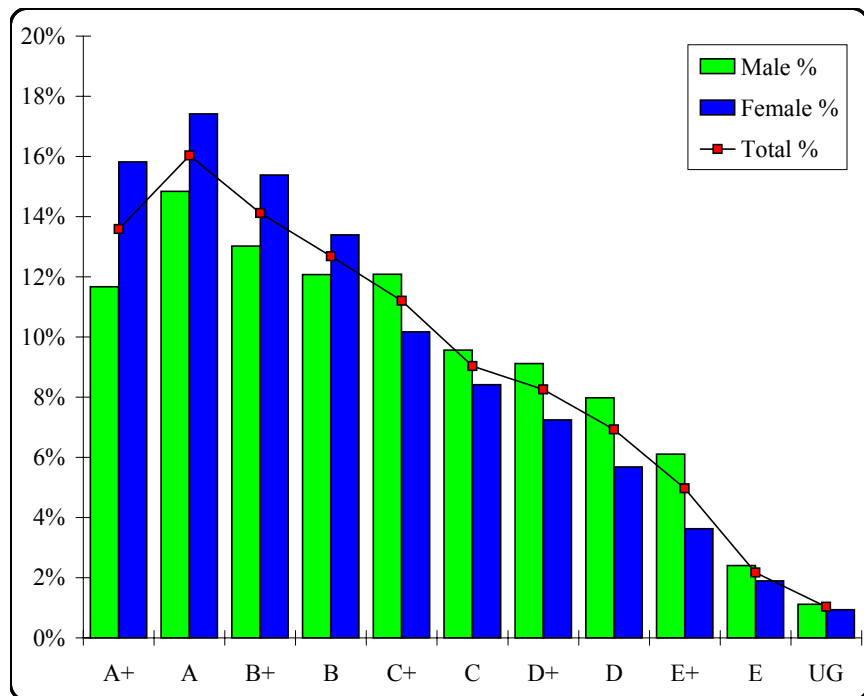
Business Management

Graded Assessment 1 COURSEWORK UNIT 3

Table of Grade Distributions: male, female and all students assessed

GRADE	A+	A	B+	B	C+	C	D+	D	E+	E	UG	Total
Male	699	889	780	723	724	573	546	478	366	144	67	5989
Male %	12%	15%	13%	12%	12%	10%	9%	8%	6%	2%	1%	100%
Female	810	892	788	686	521	431	371	291	186	97	48	5121
Female %	16%	17%	15%	13%	10%	8%	7%	6%	4%	2%	1%	100%
Total	1509	1781	1568	1409	1245	1004	917	769	552	241	115	11110
Total %	14%	16%	14%	13%	11%	9%	8%	7%	5%	2%	1%	100%
Cumul %	14%	30%	44%	56%	68%	77%	85%	92%	97%	99%	100%	
Scaling Points	100–90	89–81	80–74	73–67	66–61	60–55	54–49	48–42	41–32	31–16	15–0	Max 100

Summary Statistics:	
Mean	68.43
Std. dev.	18.84
Median	B
Not Assessed:	
Male	76
Male %	1%
Female	94
Female %	2%
All	170
All %	2%
Total Enrolments:	
Male	6065
Female	5215
All	11280



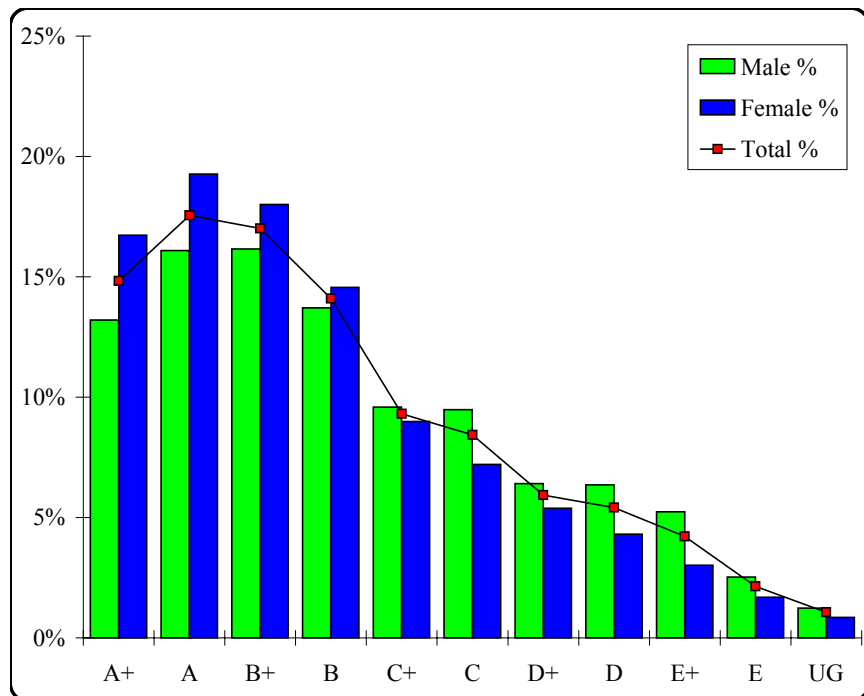
Business Management

Graded Assessment 2 COURSEWORK UNIT 4

Table of Grade Distributions: male, female and all students assessed

GRADE	A+	A	B+	B	C+	C	D+	D	E+	E	UG	Total
Male	756	921	925	785	549	543	367	364	300	145	71	5726
Male %	13%	16%	16%	14%	10%	9%	6%	6%	5%	3%	1%	100%
Female	824	949	887	717	443	355	265	212	149	83	42	4926
Female %	17%	19%	18%	15%	9%	7%	5%	4%	3%	2%	1%	100%
Total	1580	1870	1812	1502	992	898	632	576	449	228	113	10652
Total %	15%	18%	17%	14%	9%	8%	6%	5%	4%	2%	1%	100%
Cumul %	15%	32%	49%	63%	73%	81%	87%	93%	97%	99%	100%	
Scaling Points	100–90	89–80	79–71	70–63	62–57	56–51	50–46	45–40	39–33	32–21	20–0	Max 100

Summary Statistics:	
Mean	68.54
Std. dev.	19.12
Median	B
Not Assessed:	
Male	339
Male %	6%
Female	289
Female %	6%
All	628
All %	6%
Total Enrolments:	
Male	6065
Female	5215
All	11280



Business Management

Graded Assessment 3 WRITTEN EXAMINATION

Table of Grade Distributions: male, female and all students assessed

GRADE	A+	A	B+	B	C+	C	D+	D	E+	E	UG	Total
Male	349	474	555	574	799	802	641	547	398	243	184	5566
Male %	6%	9%	10%	10%	14%	14%	12%	10%	7%	4%	3%	100%
Female	374	526	530	579	789	647	457	403	266	162	86	4819
Female %	8%	11%	11%	12%	16%	13%	9%	8%	6%	3%	2%	100%
Total	723	1000	1085	1153	1588	1449	1098	950	664	405	270	10385
Total %	7%	10%	10%	11%	15%	14%	11%	9%	6%	4%	3%	100%
Cumul %	7%	17%	27%	38%	53%	67%	78%	87%	94%	97%	100%	
Scaling Points	80–65	64–58	57–52	51–46	45–38	37–30	29–23	22–16	15–10	9–5	4–0	Max 80

Summary Statistics:	
Mean	38.36
Std. dev.	18.05
Median	C+
Not Assessed:	
Male	499
Male %	8%
Female	396
Female %	8%
All	895
All %	8%
Total Enrolments:	
Male	6065
Female	5215
All	11280

