

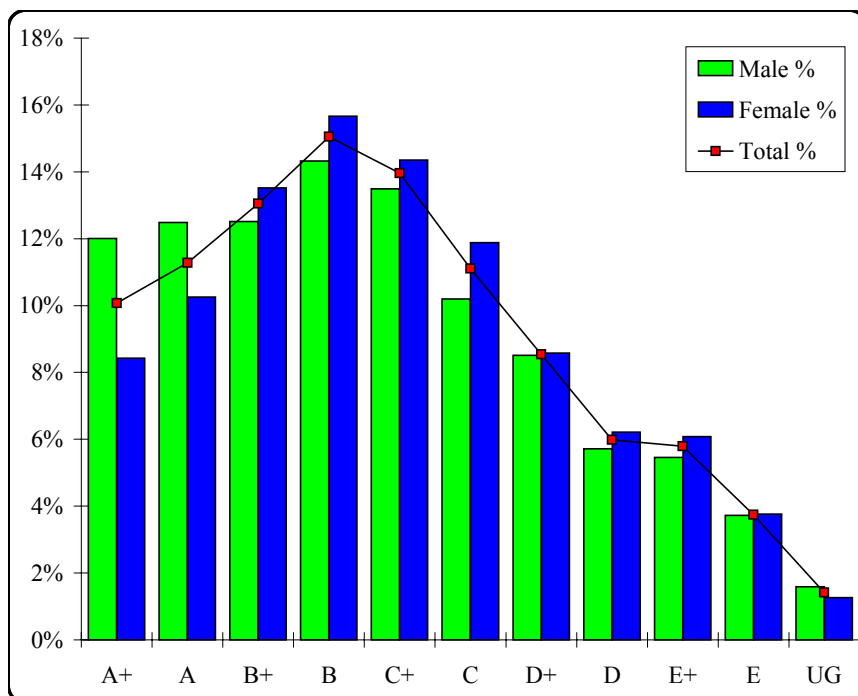
# Chemistry

## Graded Assessment 1 WRITTEN EXAMINATION 1

Table of Grade Distributions: male, female and all students assessed

GRADE	A+	A	B+	B	C+	C	D+	D	E+	E	UG	Total
Male	477	496	497	569	536	405	338	227	217	148	63	3973
Male %	12%	12%	13%	14%	13%	10%	9%	6%	5%	4%	2%	100%
Female	392	477	629	729	668	553	399	289	283	175	59	4653
Female %	8%	10%	14%	16%	14%	12%	9%	6%	6%	4%	1%	100%
Total	869	973	1126	1298	1204	958	737	516	500	323	122	8626
Total %	10%	11%	13%	15%	14%	11%	9%	6%	6%	4%	1%	100%
Cumul %	10%	21%	34%	49%	63%	75%	83%	89%	95%	99%	100%	
Scaling Points	132–116	115–107	106–97	96–84	83–70	69–57	56–47	46–39	38–30	29–20	19–0	Max 132

Summary Statistics:	
Mean	79.28
Std. dev.	29.04
Median	C+
Not Assessed:	
Male	39
Male %	1%
Female	46
Female %	1%
All	85
All %	1%
Total Enrolments:	
Male	4012
Female	4699
All	8711



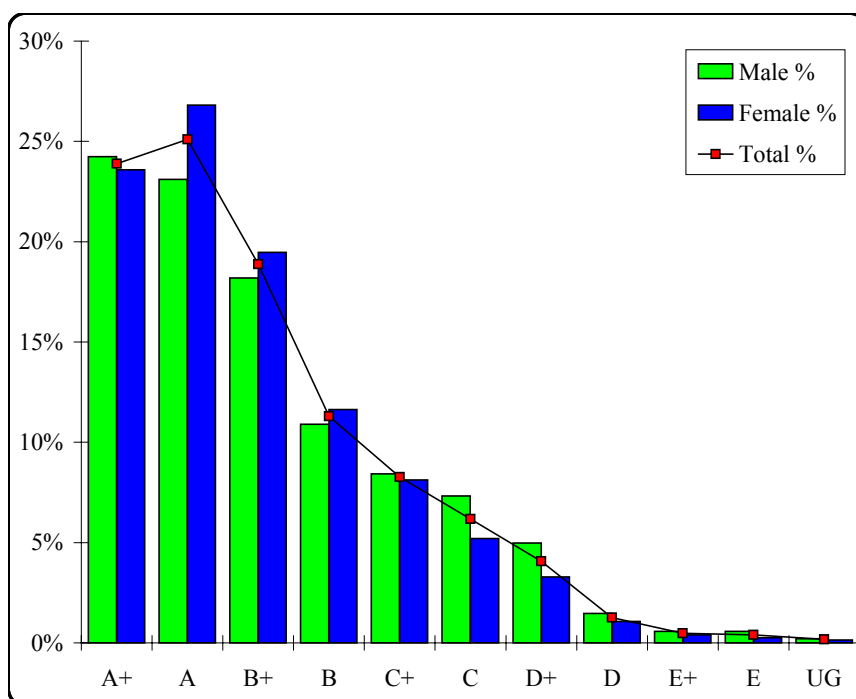
# Chemistry

## Graded Assessment 2 COURSEWORK UNIT 3/4

Table of Grade Distributions: male, female and all students assessed

GRADE	A+	A	B+	B	C+	C	D+	D	E+	E	UG	Total
Male	969	924	727	436	337	293	199	59	23	23	8	3998
Male %	24%	23%	18%	11%	8%	7%	5%	1%	1%	1%	0%	100%
Female	1102	1253	910	544	380	243	154	50	19	12	7	4674
Female %	24%	27%	19%	12%	8%	5%	3%	1%	0%	0%	0%	100%
Total	2071	2177	1637	980	717	536	353	109	42	35	15	8672
Total %	24%	25%	19%	11%	8%	6%	4%	1%	0%	0%	0%	100%
Cumul %	24%	49%	68%	79%	87%	94%	98%	99%	99%	100%	100%	
Scaling Points	200–182	181–165	164–150	149–139	138–130	129–120	119–105	104–74	73–45	44–20	19–0	Max 200

Summary Statistics:	
Mean	159.51
Std. dev.	26.78
Median	B+
Not Assessed:	
Male	14
Male %	0%
Female	25
Female %	1%
All	39
All %	0%
Total Enrolments:	
Male	4012
Female	4699
All	8711



# Chemistry

## Graded Assessment 3 WRITTEN EXAMINATION 2

Table of Grade Distributions: male, female and all students assessed

GRADE	A+	A	B+	B	C+	C	D+	D	E+	E	UG	Total
Male	408	478	504	554	431	456	328	316	241	127	87	3930
Male %	10%	12%	13%	14%	11%	12%	8%	8%	6%	3%	2%	100%
Female	396	498	637	664	602	570	469	320	252	126	75	4609
Female %	9%	11%	14%	14%	13%	12%	10%	7%	5%	3%	2%	100%
Total	804	976	1141	1218	1033	1026	797	636	493	253	162	8539
Total %	9%	11%	13%	14%	12%	12%	9%	7%	6%	3%	2%	100%
Cumul %	9%	21%	34%	48%	61%	73%	82%	89%	95%	98%	100%	
Scaling Points	150–135	134–125	124–114	113–98	97–84	83–68	67–54	53–42	41–29	28–20	19–0	Max 150

Summary Statistics:	
Mean	91.05
Std. dev.	35.15
Median	C+
Not Assessed:	
Male	82
Male %	2%
Female	90
Female %	2%
All	172
All %	2%
Total Enrolments:	
Male	4012
Female	4699
All	8711

