

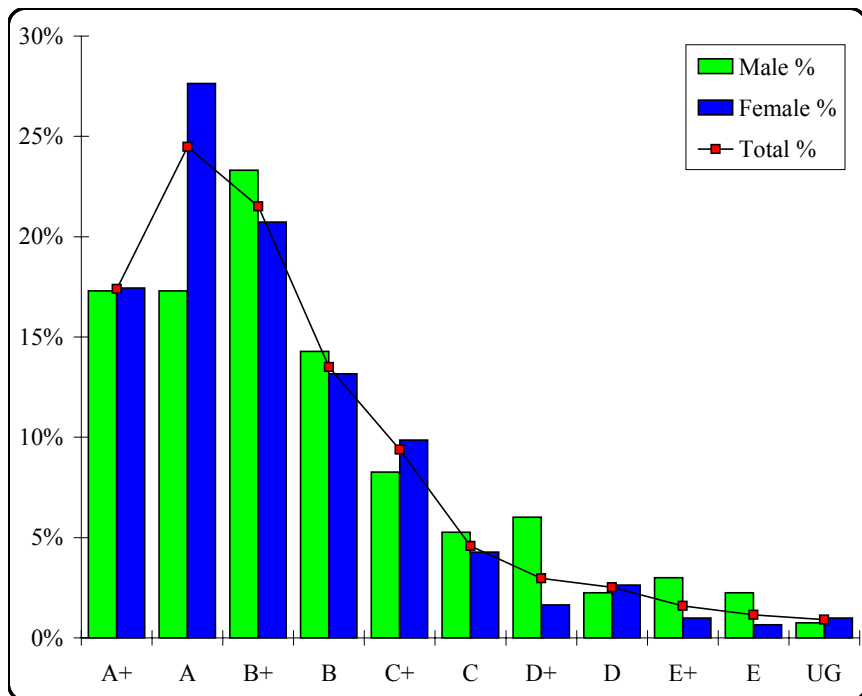
Classical Societies and Cultures

Graded Assessment 1 COURSEWORK UNIT 3

Table of Grade Distributions: male, female and all students assessed

GRADE	A+	A	B+	B	C+	C	D+	D	E+	E	UG	Total
Male	23	23	31	19	11	7	8	3	4	3	1	133
Male %	17%	17%	23%	14%	8%	5%	6%	2%	3%	2%	1%	100%
Female	53	84	63	40	30	13	5	8	3	2	3	304
Female %	17%	28%	21%	13%	10%	4%	2%	3%	1%	1%	1%	100%
Total	76	107	94	59	41	20	13	11	7	5	4	437
Total %	17%	24%	22%	14%	9%	5%	3%	3%	2%	1%	1%	100%
Cumul %	17%	42%	63%	77%	86%	91%	94%	96%	98%	99%	100%	
Scaling Points	100–92	91–82	81–75	74–69	68–61	60–55	54–48	47–31	30–21	20–12	11–0	Max 100

Summary Statistics:	
Mean	76.41
Std. dev.	17.55
Median	B+
Not Assessed:	
Male	1
Male %	1%
Female	5
Female %	2%
All	6
All %	1%
Total Enrolments:	
Male	134
Female	309
All	443



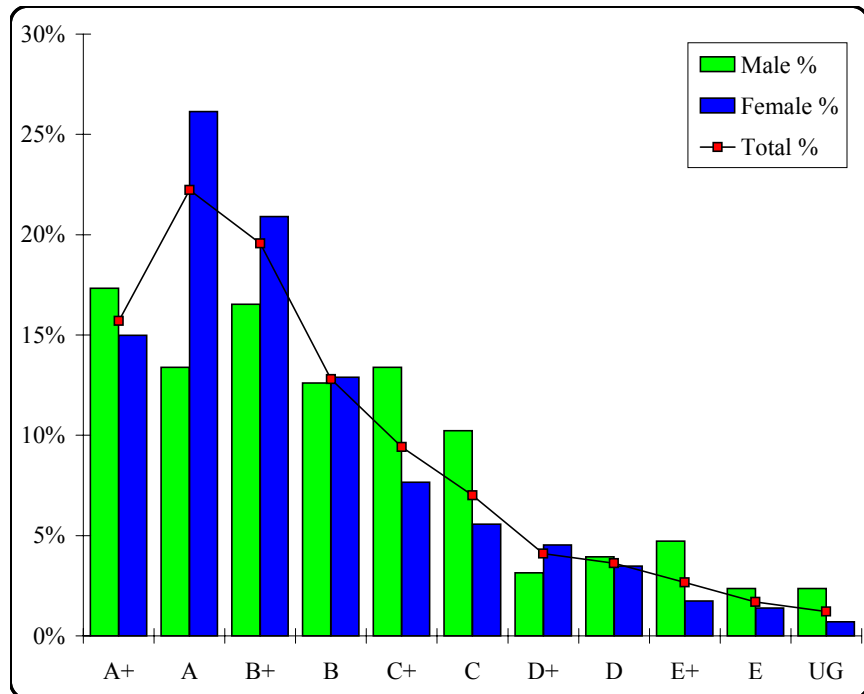
Classical Societies and Cultures

Graded Assessment 2 COURSEWORK UNIT 4

Table of Grade Distributions: male, female and all students assessed

GRADE	A+	A	B+	B	C+	C	D+	D	E+	E	UG	Total
Male	22	17	21	16	17	13	4	5	6	3	3	127
Male %	17%	13%	17%	13%	13%	10%	3%	4%	5%	2%	2%	100%
Female	43	75	60	37	22	16	13	10	5	4	2	287
Female %	15%	26%	21%	13%	8%	6%	5%	3%	2%	1%	1%	100%
Total	65	92	81	53	39	29	17	15	11	7	5	414
Total %	16%	22%	20%	13%	9%	7%	4%	4%	3%	2%	1%	100%
Cumul %	16%	38%	57%	70%	80%	87%	91%	94%	97%	99%	100%	
Scaling Points	100–96	95–85	84–78	77–74	73–69	68–65	64–60	59–52	51–43	42–27	26–0	Max 100

Summary Statistics:	
Mean	78.83
Std. dev.	15.98
Median	B+
Not Assessed:	
Male	7
Male %	5%
Female	22
Female %	7%
All	29
All %	7%
Total Enrolments:	
Male	134
Female	309
All	443



Classical Societies and Cultures

Graded Assessment 3 WRITTEN EXAMINATION

Table of Grade Distributions: male, female and all students assessed

GRADE	A+	A	B+	B	C+	C	D+	D	E+	E	UG	Total
Male	11	11	14	20	24	13	13	9	4	2	2	123
Male %	9%	9%	11%	16%	20%	11%	11%	7%	3%	2%	2%	100%
Female	31	35	44	46	43	31	19	19	8	2	1	279
Female %	11%	13%	16%	16%	15%	11%	7%	7%	3%	1%	0%	100%
Total	42	46	58	66	67	44	32	28	12	4	3	402
Total %	10%	11%	14%	16%	17%	11%	8%	7%	3%	1%	1%	100%
Cumul %	10%	22%	36%	53%	69%	80%	88%	95%	98%	99%	100%	
Scaling Points	120–102	101–94	93–84	83–77	76–67	66–61	60–52	51–39	38–24	23–15	14–0	Max 120

Summary Statistics:	
Mean	75.83
Std. dev.	20.56
Median	B
Not Assessed:	
Male	11
Male %	8%
Female	30
Female %	10%
All	41
All %	9%
Total Enrolments:	
Male	134
Female	309
All	443

