

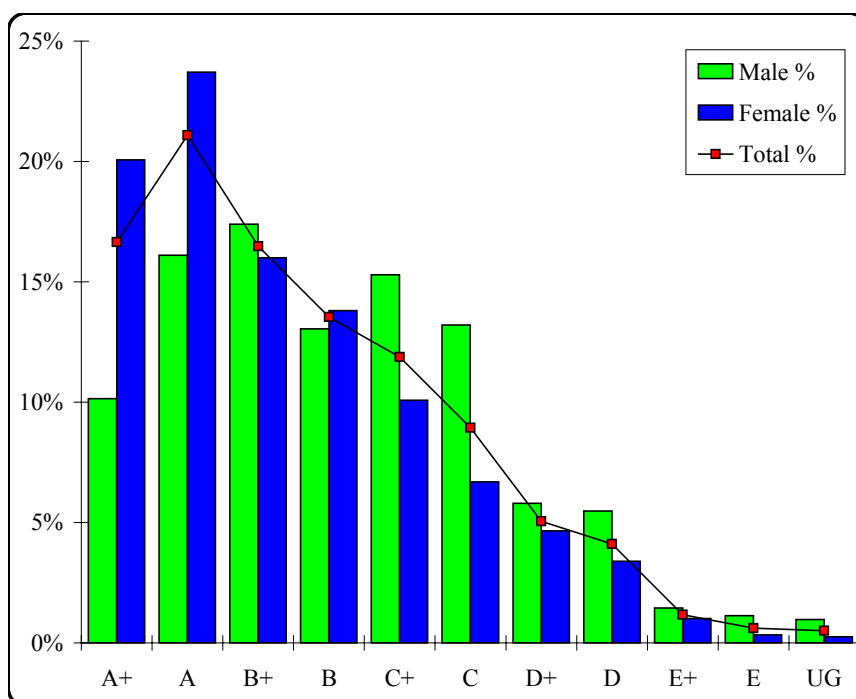
Drama

Graded Assessment 1 COURSEWORK UNIT 3/4

Table of Grade Distributions: male, female and all students assessed

GRADE	A+	A	B+	B	C+	C	D+	D	E+	E	UG	Total
Male	63	100	108	81	95	82	36	34	9	7	6	621
Male %	10%	16%	17%	13%	15%	13%	6%	5%	1%	1%	1%	100%
Female	237	280	189	163	119	79	55	40	12	4	3	1181
Female %	20%	24%	16%	14%	10%	7%	5%	3%	1%	0%	0%	100%
Total	300	380	297	244	214	161	91	74	21	11	9	1802
Total %	17%	21%	16%	14%	12%	9%	5%	4%	1%	1%	0%	100%
Cumul %	17%	38%	54%	68%	80%	89%	94%	98%	99%	100%	100%	
Scaling Points	115–105	104–95	94–88	87–80	79–72	71–63	62–54	53–40	39–30	29–12	11–0	Max 115

Summary Statistics:	
Mean	86.01
Std. dev.	19.45
Median	B+
Not Assessed:	
Male	31
Male %	5%
Female	43
Female %	4%
All	74
All %	4%
Total Enrolments:	
Male	652
Female	1224
All	1876



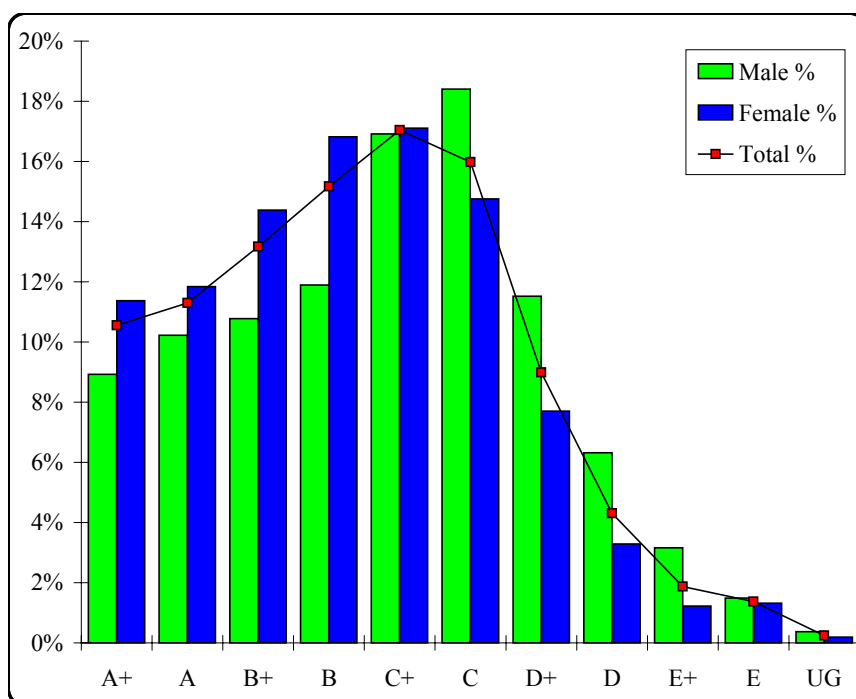
Drama

Graded Assessment 2 SOLO PERFORMANCE EXAMINATION

Table of Grade Distributions: male, female and all students assessed

GRADE	A+	A	B+	B	C+	C	D+	D	E+	E	UG	Total
Male	48	55	58	64	91	99	62	34	17	8	2	538
Male %	9%	10%	11%	12%	17%	18%	12%	6%	3%	1%	0%	100%
Female	121	126	153	179	182	157	82	35	13	14	2	1064
Female %	11%	12%	14%	17%	17%	15%	8%	3%	1%	1%	0%	100%
Total	169	181	211	243	273	256	144	69	30	22	4	1602
Total %	11%	11%	13%	15%	17%	16%	9%	4%	2%	1%	0%	100%
Cumul %	11%	22%	35%	50%	67%	83%	92%	97%	98%	100%	100%	
Scaling Points	231–222	221–209	208–193	192–176	175–154	153–128	127–106	105–85	84–64	63–19	18–0	Max 231

Summary Statistics:	
Mean	170.26
Std. dev.	42.91
Median	B
Not Assessed:	
Male	114
Male %	17%
Female	160
Female %	13%
All	274
All %	15%
Total Enrolments:	
Male	652
Female	1224
All	1876



Drama

Graded Assessment 3 WRITTEN EXAMINATION

Table of Grade Distributions: male, female and all students assessed

GRADE	A+	A	B+	B	C+	C	D+	D	E+	E	UG	Total
Male	32	29	52	64	85	91	79	43	39	16	4	534
Male %	6%	5%	10%	12%	16%	17%	15%	8%	7%	3%	1%	100%
Female	127	141	143	176	164	140	93	45	30	11	3	1073
Female %	12%	13%	13%	16%	15%	13%	9%	4%	3%	1%	0%	100%
Total	159	170	195	240	249	231	172	88	69	27	7	1607
Total %	10%	11%	12%	15%	15%	14%	11%	5%	4%	2%	0%	100%
Cumul %	10%	20%	33%	48%	63%	77%	88%	94%	98%	100%	100%	
Scaling Points	120–98	97–89	88–81	80–73	72–64	63–54	53–43	42–33	32–22	21–12	11–0	Max 120

Summary Statistics:	
Mean	69.48
Std. dev.	21.73
Median	C+
Not Assessed:	
Male	118
Male %	18%
Female	151
Female %	12%
All	269
All %	14%
Total Enrolments:	
Male	652
Female	1224
All	1876

