

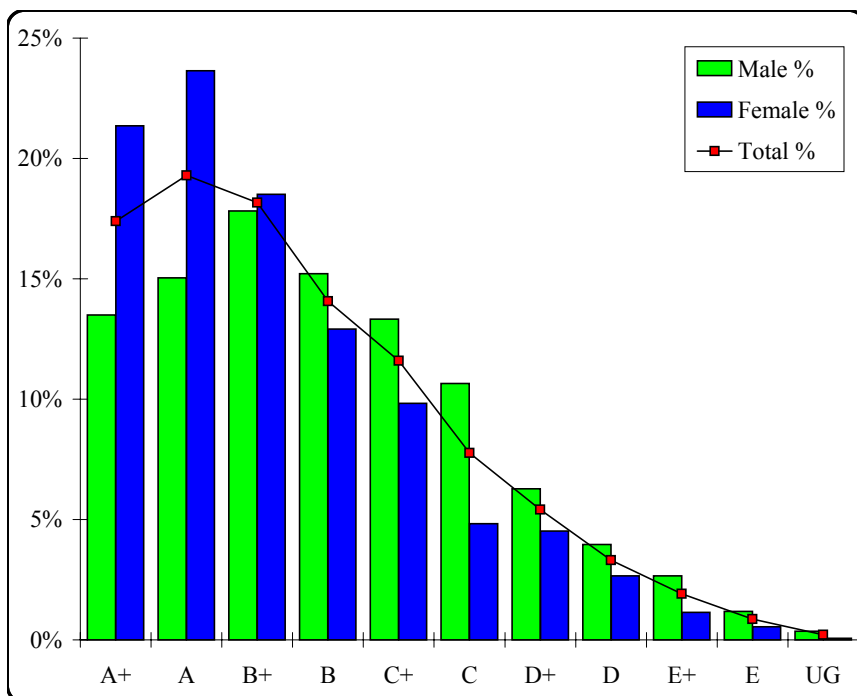
English (ESL)

Graded Assessment 1 COURSEWORK UNIT 3

Table of Grade Distributions: male, female and all students assessed

GRADE	A+	A	B+	B	C+	C	D+	D	E+	E	UG	Total
Male	228	254	301	257	225	180	106	67	45	20	6	1689
Male %	13%	15%	18%	15%	13%	11%	6%	4%	3%	1%	0%	100%
Female	354	392	307	214	163	80	75	44	19	9	1	1658
Female %	21%	24%	19%	13%	10%	5%	5%	3%	1%	1%	0%	100%
Total	582	646	608	471	388	260	181	111	64	29	7	3347
Total %	17%	19%	18%	14%	12%	8%	5%	3%	2%	1%	0%	100%
Cumul %	17%	37%	55%	69%	81%	88%	94%	97%	99%	100%	100%	
Scaling Points	100–87	86–78	77–71	70–66	65–61	60–56	55–51	50–44	43–33	32–15	14–0	Max 100

Summary Statistics:	
Mean	72.31
Std. dev.	14.74
Median	B+
Not Assessed:	
Male	16
Male %	1%
Female	14
Female %	1%
All	30
All %	1%
Total Enrolments:	
Male	1705
Female	1672
All	3377



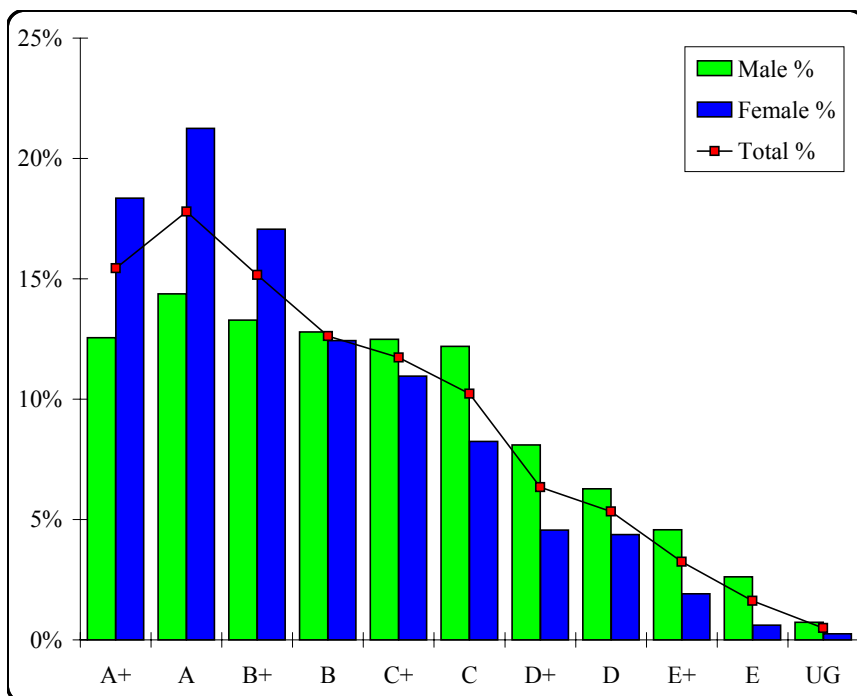
English (ESL)

Graded Assessment 2 COURSEWORK UNIT 4

Table of Grade Distributions: male, female and all students assessed

GRADE	A+	A	B+	B	C+	C	D+	D	E+	E	UG	Total
Male	206	236	218	210	205	200	133	103	75	43	12	1641
Male %	13%	14%	13%	13%	12%	12%	8%	6%	5%	3%	1%	100%
Female	298	345	277	202	178	134	74	71	31	10	4	1624
Female %	18%	21%	17%	12%	11%	8%	5%	4%	2%	1%	0%	100%
Total	504	581	495	412	383	334	207	174	106	53	16	3265
Total %	15%	18%	15%	13%	12%	10%	6%	5%	3%	2%	0%	100%
Cumul %	15%	33%	48%	61%	73%	83%	89%	95%	98%	100%	100%	
Scaling Points	100–90	89–81	80–75	74–70	69–65	64–60	59–56	55–49	48–40	39–20	19–0	Max 100

Summary Statistics:	
Mean	73.29
Std. dev.	15.34
Median	B
Not Assessed:	
Male	64
Male %	4%
Female	48
Female %	3%
All	112
All %	3%
Total Enrolments:	
Male	1705
Female	1672
All	3377



English (ESL)

Graded Assessment 3 WRITTEN EXAMINATION

Table of Grade Distributions: male, female and all students assessed

GRADE	A+	A	B+	B	C+	C	D+	D	E+	E	UG	Total
Male	111	116	165	246	310	283	196	159	28	2	2	1618
Male %	7%	7%	10%	15%	19%	17%	12%	10%	2%	0%	0%	100%
Female	161	206	230	279	295	210	144	78	8	0	0	1611
Female %	10%	13%	14%	17%	18%	13%	9%	5%	0%	0%	0%	100%
Total	272	322	395	525	605	493	340	237	36	2	2	3229
Total %	8%	10%	12%	16%	19%	15%	11%	7%	1%	0%	0%	100%
Cumul %	8%	18%	31%	47%	66%	81%	91%	99%	100%	100%	100%	
Scaling Points	120–95	94–86	85–78	77–69	68–59	58–49	48–40	39–22	21–8	7–5	4–0	Max 120

Summary Statistics:	
Mean	66.62
Std. dev.	19.91
Median	C+
Not Assessed:	
Male	87
Male %	5%
Female	61
Female %	4%
All	148
All %	4%
Total Enrolments:	
Male	1705
Female	1672
All	3377

