

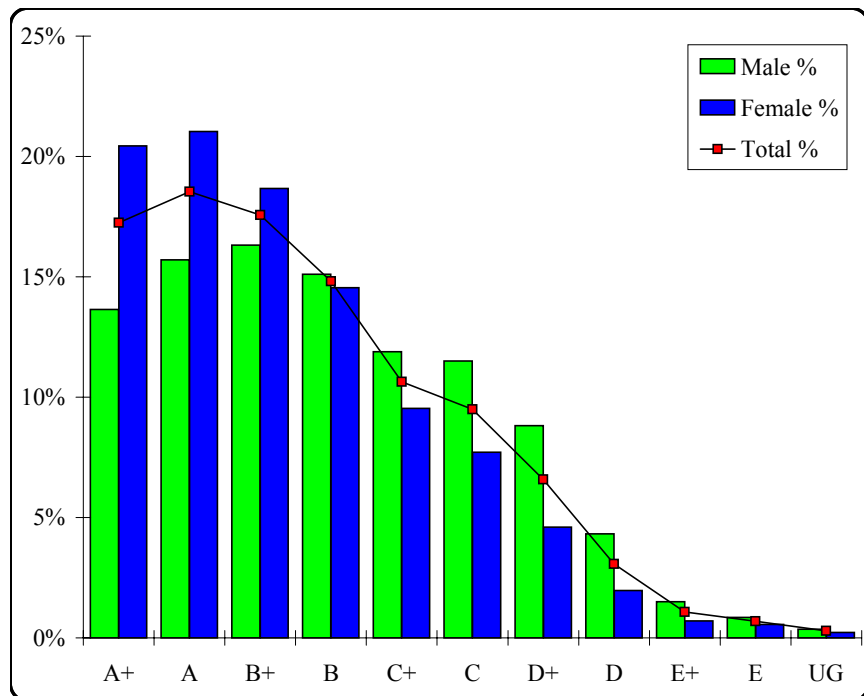
English

Graded Assessment 1 COURSEWORK UNIT 3

Table of Grade Distributions: male, female and all students assessed

GRADE	A+	A	B+	B	C+	C	D+	D	E+	E	UG	Total
Male	2858	3291	3417	3165	2490	2411	1847	905	314	177	75	20950
Male %	14%	16%	16%	15%	12%	12%	9%	4%	1%	1%	0%	100%
Female	4830	4973	4414	3437	2253	1823	1087	466	167	131	54	23635
Female %	20%	21%	19%	15%	10%	8%	5%	2%	1%	1%	0%	100%
Total	7688	8264	7831	6602	4743	4234	2934	1371	481	308	129	44585
Total %	17%	19%	18%	15%	11%	9%	7%	3%	1%	1%	0%	100%
Cumul %	17%	36%	53%	68%	79%	88%	95%	98%	99%	100%	100%	
Scaling Points	100–84	83–75	74–68	67–62	61–57	56–51	50–44	43–35	34–25	24–12	11–0	Max 100

Summary Statistics:	
Mean	68.46
Std. dev.	15.65
Median	B+
Not Assessed:	
Male	510
Male %	2%
Female	445
Female %	2%
All	955
All %	2%
Total Enrolments:	
Male	21460
Female	24080
All	45540



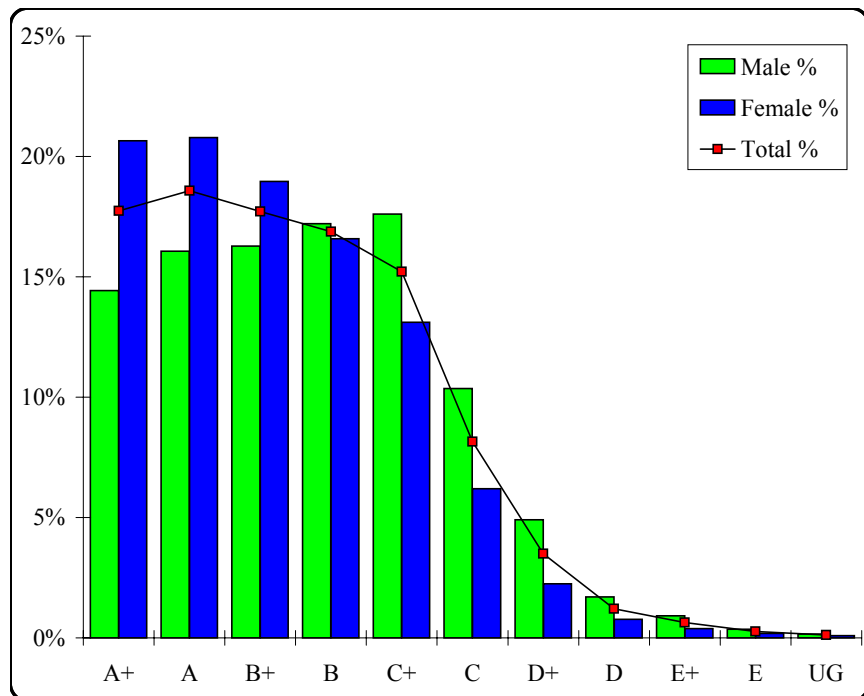
English

Graded Assessment 2 COURSEWORK UNIT 4

Table of Grade Distributions: male, female and all students assessed

GRADE	A+	A	B+	B	C+	C	D+	D	E+	E	UG	Total
Male	2927	3259	3302	3491	3570	2102	996	346	186	73	32	20284
Male %	14%	16%	16%	17%	18%	10%	5%	2%	1%	0%	0%	100%
Female	4762	4795	4375	3825	3025	1430	519	179	89	44	21	23064
Female %	21%	21%	19%	17%	13%	6%	2%	1%	0%	0%	0%	100%
Total	7689	8054	7677	7316	6595	3532	1515	525	275	117	53	43348
Total %	18%	19%	18%	17%	15%	8%	3%	1%	1%	0%	0%	100%
Cumul %	18%	36%	54%	71%	86%	94%	98%	99%	100%	100%	100%	
Scaling Points	100–85	84–76	75–69	68–62	61–54	53–47	46–40	39–33	32–22	21–11	10–0	Max 100

Summary Statistics:	
Mean	69.91
Std. dev.	15.20
Median	B+
Not Assessed:	
Male	1176
Male %	5%
Female	1016
Female %	4%
All	2192
All %	5%
Total Enrolments:	
Male	21460
Female	24080
All	45540



English

Graded Assessment 3 WRITTEN EXAMINATION

Table of Grade Distributions: male, female and all students assessed

GRADE	A+	A	B+	B	C+	C	D+	D	E+	E	UG	Total
Male	1128	1406	1912	2290	2604	2744	2518	2022	1795	1191	274	19884
Male %	6%	7%	10%	12%	13%	14%	13%	10%	9%	6%	1%	100%
Female	1721	2286	2926	3302	3333	3150	2467	1748	1156	575	92	22756
Female %	8%	10%	13%	15%	15%	14%	11%	8%	5%	3%	0%	100%
Total	2849	3692	4838	5592	5937	5894	4985	3770	2951	1766	366	42640
Total %	7%	9%	11%	13%	14%	14%	12%	9%	7%	4%	1%	100%
Cumul %	7%	15%	27%	40%	54%	68%	79%	88%	95%	99%	100%	
Scaling Points	120–95	94–86	85–78	77–71	70–64	63–57	56–50	49–43	42–34	33–19	18–0	Max 120

Summary Statistics:	
Mean	65.28
Std. dev.	19.24
Median	C+
Not Assessed:	
Male	1576
Male %	7%
Female	1324
Female %	5%
All	2900
All %	6%
Total Enrolments:	
Male	21460
Female	24080
All	45540

