

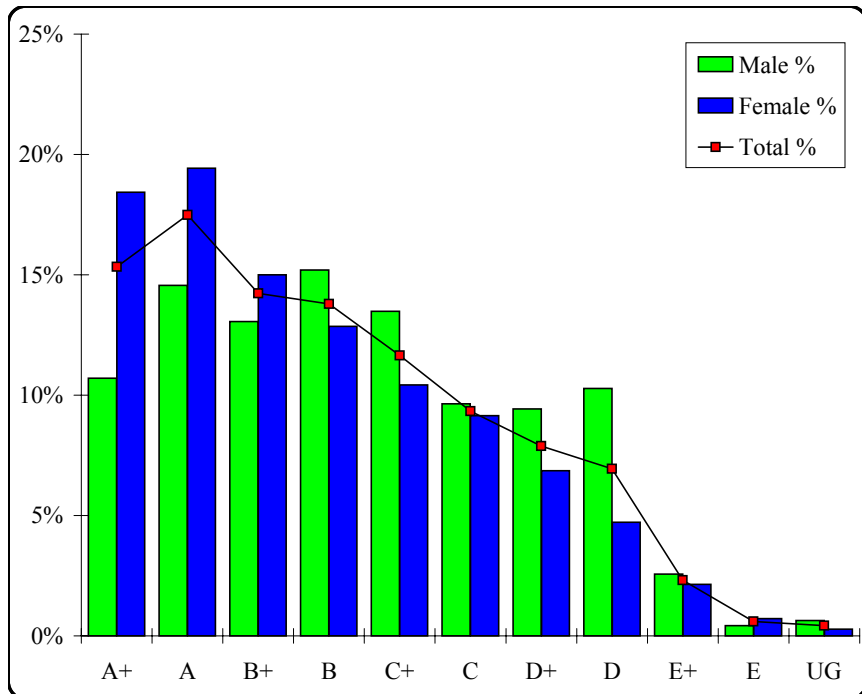
# English Language

## Graded Assessment 1 COURSEWORK UNIT 3

Table of Grade Distributions: male, female and all students assessed

GRADE	A+	A	B+	B	C+	C	D+	D	E+	E	UG	Total
Male	50	68	61	71	63	45	44	48	12	2	3	467
Male %	11%	15%	13%	15%	13%	10%	9%	10%	3%	0%	1%	100%
Female	129	136	105	90	73	64	48	33	15	5	2	700
Female %	18%	19%	15%	13%	10%	9%	7%	5%	2%	1%	0%	100%
Total	179	204	166	161	136	109	92	81	27	7	5	1167
Total %	15%	17%	14%	14%	12%	9%	8%	7%	2%	1%	0%	100%
Cumul %	15%	33%	47%	61%	72%	82%	90%	97%	99%	100%	100%	
Scaling Points	100–86	85–76	75–70	69–64	63–57	56–51	50–44	43–33	32–17	16–12	11–0	Max 100

Summary Statistics:	
Mean	66.80
Std. dev.	17.64
Median	B
Not Assessed:	
Male	5
Male %	1%
Female	11
Female %	2%
All	16
All %	1%
Total Enrolments:	
Male	472
Female	711
All	1183



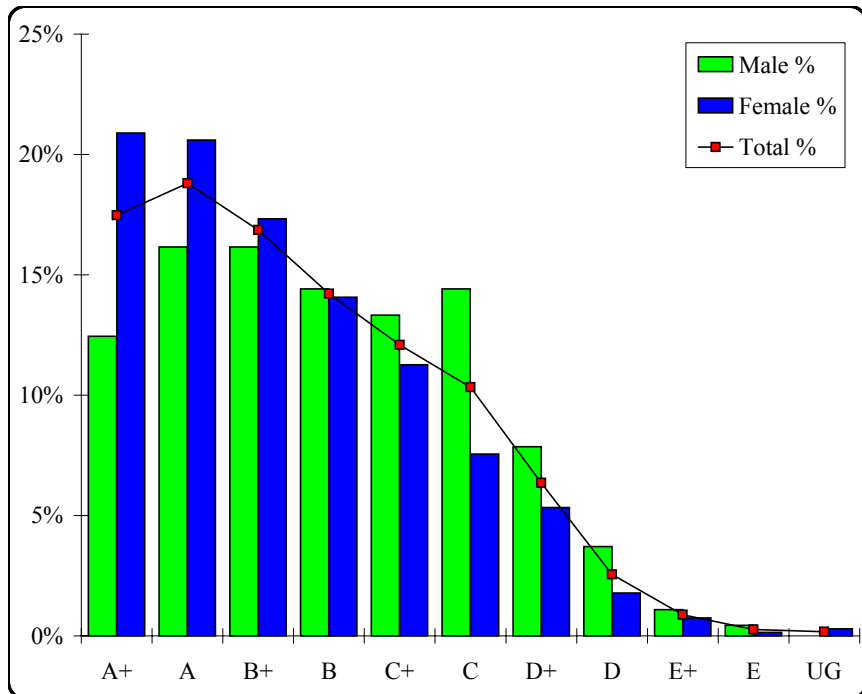
# English Language

## Graded Assessment 2 COURSEWORK UNIT 4

Table of Grade Distributions: male, female and all students assessed

GRADE	A+	A	B+	B	C+	C	D+	D	E+	E	UG	Total
Male	57	74	74	66	61	66	36	17	5	2	0	458
Male %	12%	16%	16%	14%	13%	14%	8%	4%	1%	0%	0%	100%
Female	141	139	117	95	76	51	36	12	5	1	2	675
Female %	21%	21%	17%	14%	11%	8%	5%	2%	1%	0%	0%	100%
Total	198	213	191	161	137	117	72	29	10	3	2	1133
Total %	17%	19%	17%	14%	12%	10%	6%	3%	1%	0%	0%	100%
Cumul %	17%	36%	53%	67%	79%	90%	96%	99%	100%	100%	100%	
Scaling Points	100–84	83–75	74–68	67–61	60–53	52–45	44–36	35–27	26–20	19–10	9–0	Max 100

Summary Statistics:	
Mean	67.34
Std. dev.	17.12
Median	B+
Not Assessed:	
Male	14
Male %	3%
Female	36
Female %	5%
All	50
All %	4%
Total Enrolments:	
Male	472
Female	711
All	1183



# English Language

## Graded Assessment 3 WRITTEN EXAMINATION

Table of Grade Distributions: male, female and all students assessed

GRADE	A+	A	B+	B	C+	C	D+	D	E+	E	UG	Total
Male	26	21	42	55	65	67	51	45	39	26	7	444
Male %	6%	5%	9%	12%	15%	15%	11%	10%	9%	6%	2%	100%
Female	41	75	84	93	89	83	75	55	40	19	3	657
Female %	6%	11%	13%	14%	14%	13%	11%	8%	6%	3%	0%	100%
Total	67	96	126	148	154	150	126	100	79	45	10	1101
Total %	6%	9%	11%	13%	14%	14%	11%	9%	7%	4%	1%	100%
Cumul %	6%	15%	26%	40%	54%	67%	79%	88%	95%	99%	100%	
Scaling Points	200–172	171–157	156–141	140–126	125–113	112–97	96–81	80–64	63–46	45–23	22–0	Max 200

Summary Statistics:	
Mean	113.35
Std. dev.	39.11
Median	C+
Not Assessed:	
Male	28
Male %	6%
Female	54
Female %	8%
All	82
All %	7%
Total Enrolments:	
Male	472
Female	711
All	1183

