

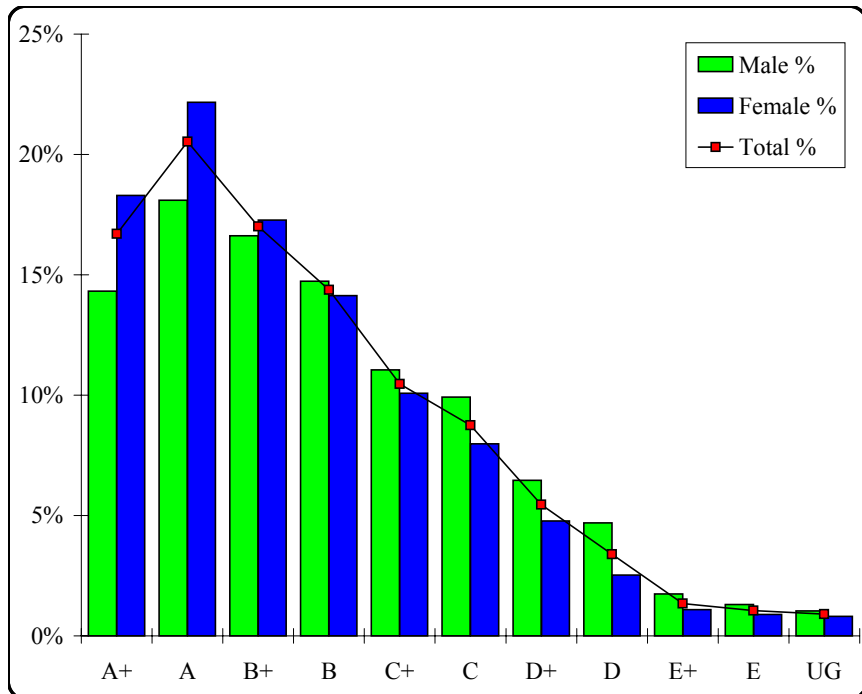
Legal Studies

Graded Assessment 1 COURSEWORK UNIT 3

Table of Grade Distributions: male, female and all students assessed

GRADE	A+	A	B+	B	C+	C	D+	D	E+	E	UG	Total
Male	485	613	563	499	374	336	219	159	59	44	35	3386
Male %	14%	18%	17%	15%	11%	10%	6%	5%	2%	1%	1%	100%
Female	927	1123	875	716	511	404	242	128	55	45	41	5067
Female %	18%	22%	17%	14%	10%	8%	5%	3%	1%	1%	1%	100%
Total	1412	1736	1438	1215	885	740	461	287	114	89	76	8453
Total %	17%	21%	17%	14%	10%	9%	5%	3%	1%	1%	1%	100%
Cumul %	17%	37%	54%	69%	79%	88%	93%	97%	98%	99%	100%	
Scaling Points	100-92	91-82	81-73	72-64	63-56	55-49	48-43	42-34	33-22	21-10	9-0	Max 100

Summary Statistics:	
Mean	71.94
Std. dev.	19.40
Median	B+
Not Assessed:	
Male	61
Male %	2%
Female	77
Female %	1%
All	138
All %	2%
Total Enrolments:	
Male	3447
Female	5144
All	8591



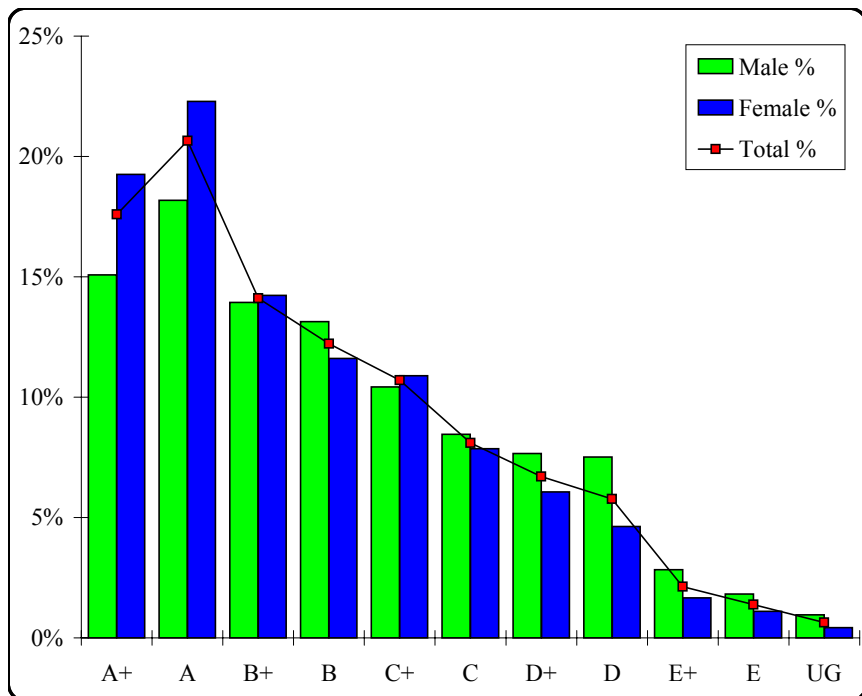
Legal Studies

Graded Assessment 2 COURSEWORK UNIT 4

Table of Grade Distributions: male, female and all students assessed

GRADE	A+	A	B+	B	C+	C	D+	D	E+	E	UG	Total
Male	490	591	453	427	339	275	249	244	92	59	31	3250
Male %	15%	18%	14%	13%	10%	8%	8%	8%	3%	2%	1%	100%
Female	941	1089	695	567	532	384	296	226	81	54	21	4886
Female %	19%	22%	14%	12%	11%	8%	6%	5%	2%	1%	0%	100%
Total	1431	1680	1148	994	871	659	545	470	173	113	52	8136
Total %	18%	21%	14%	12%	11%	8%	7%	6%	2%	1%	1%	100%
Cumul %	18%	38%	52%	65%	75%	83%	90%	96%	98%	99%	100%	
Scaling Points	100–92	91–81	80–73	72–65	64–57	56–50	49–43	42–35	34–29	28–14	13–0	Max 100

Summary Statistics:	
Mean	71.08
Std. dev.	20.08
Median	B+
Not Assessed:	
Male	197
Male %	6%
Female	258
Female %	5%
All	455
All %	5%
Total Enrolments:	
Male	3447
Female	5144
All	8591



Legal Studies

Graded Assessment 3 WRITTEN EXAMINATION

Table of Grade Distributions: male, female and all students assessed

GRADE	A+	A	B+	B	C+	C	D+	D	E+	E	UG	Total
Male	276	283	318	425	499	458	442	220	111	76	66	3174
Male %	9%	9%	10%	13%	16%	14%	14%	7%	3%	2%	2%	100%
Female	489	532	589	666	722	656	544	318	131	107	39	4793
Female %	10%	11%	12%	14%	15%	14%	11%	7%	3%	2%	1%	100%
Total	765	815	907	1091	1221	1114	986	538	242	183	105	7967
Total %	10%	10%	11%	14%	15%	14%	12%	7%	3%	2%	1%	100%
Cumul %	10%	20%	31%	45%	60%	74%	87%	93%	96%	99%	100%	
Scaling Points	120–107	106–98	97–88	87–75	74–60	59–43	42–24	23–13	12–8	7–3	2–0	Max 120

Summary Statistics:	
Mean	65.94
Std. dev.	31.89
Median	C+
Not Assessed:	
Male	273
Male %	8%
Female	351
Female %	7%
All	624
All %	7%
Total Enrolments:	
Male	3447
Female	5144
All	8591

