

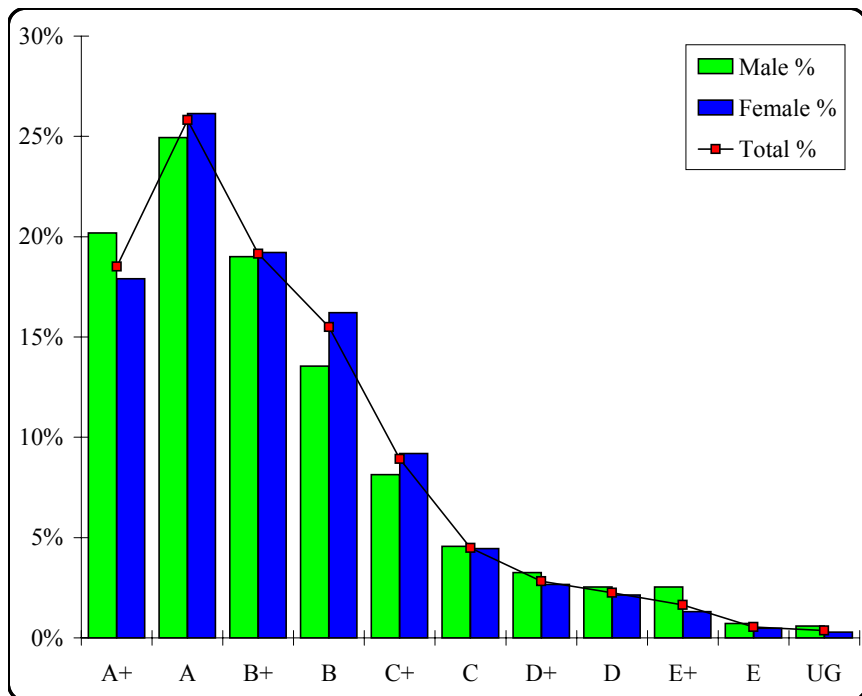
# Literature

## Graded Assessment 1 COURSEWORK UNIT 3

Table of Grade Distributions: male, female and all students assessed

GRADE	A+	A	B+	B	C+	C	D+	D	E+	E	UG	Total
Male	310	383	292	208	125	70	50	39	39	11	9	1536
Male %	20%	25%	19%	14%	8%	5%	3%	3%	3%	1%	1%	100%
Female	751	1097	806	680	386	187	112	90	55	20	12	4196
Female %	18%	26%	19%	16%	9%	4%	3%	2%	1%	0%	0%	100%
Total	1061	1480	1098	888	511	257	162	129	94	31	21	5732
Total %	19%	26%	19%	15%	9%	4%	3%	2%	2%	1%	0%	100%
Cumul %	19%	44%	63%	79%	88%	92%	95%	97%	99%	100%	100%	
Scaling Points	100–90	89–79	78–72	71–65	64–59	58–54	53–49	48–41	40–20	19–10	9–0	Max 100

Summary Statistics:	
Mean	75.24
Std. dev.	15.63
Median	B+
Not Assessed:	
Male	24
Male %	2%
Female	57
Female %	1%
All	81
All %	1%
Total Enrolments:	
Male	1560
Female	4253
All	5813



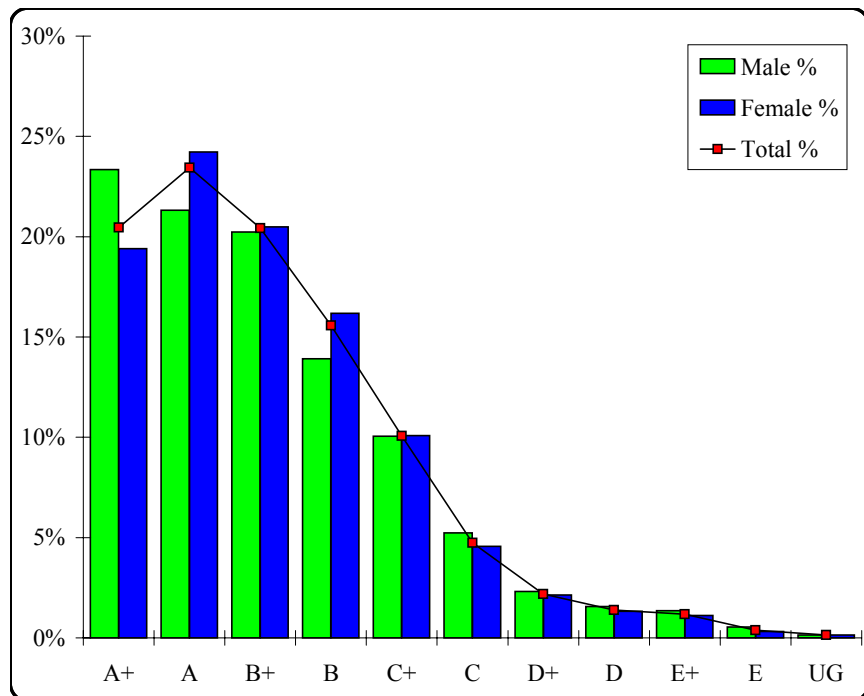
# Literature

## Graded Assessment 2 COURSEWORK UNIT 4

Table of Grade Distributions: male, female and all students assessed

GRADE	A+	A	B+	B	C+	C	D+	D	E+	E	UG	Total
Male	344	314	298	205	148	77	34	23	20	8	2	1473
Male %	23%	21%	20%	14%	10%	5%	2%	2%	1%	1%	0%	100%
Female	787	982	831	656	409	185	87	54	45	13	6	4055
Female %	19%	24%	20%	16%	10%	5%	2%	1%	1%	0%	0%	100%
Total	1131	1296	1129	861	557	262	121	77	65	21	8	5528
Total %	20%	23%	20%	16%	10%	5%	2%	1%	1%	0%	0%	100%
Cumul %	20%	44%	64%	80%	90%	95%	97%	98%	99%	100%	100%	
Scaling Points	100–90	89–80	79–72	71–65	64–58	57–52	51–47	46–41	40–23	22–10	9–0	Max TRUE

Summary Statistics:	
Mean	76.23
Std. dev.	14.97
Median	B+
Not Assessed:	
Male	87
Male %	6%
Female	198
Female %	5%
All	285
All %	5%
Total Enrolments:	
Male	1560
Female	4253
All	5813



# Literature

## Graded Assessment 3 WRITTEN EXAMINATION

Table of Grade Distributions: male, female and all students assessed

GRADE	A+	A	B+	B	C+	C	D+	D	E+	E	UG	Total
Male	147	182	240	290	252	182	85	57	6	5	10	1456
Male %	10%	13%	16%	20%	17%	13%	6%	4%	0%	0%	1%	100%
Female	341	483	746	875	732	424	227	155	15	6	13	4017
Female %	8%	12%	19%	22%	18%	11%	6%	4%	0%	0%	0%	100%
Total	488	665	986	1165	984	606	312	212	21	11	23	5473
Total %	9%	12%	18%	21%	18%	11%	6%	4%	0%	0%	0%	100%
Cumul %	9%	21%	39%	60%	78%	89%	95%	99%	99%	100%	100%	
Scaling Points	40–35	34–32	31–29	28–26	25–23	22–20	19–17	16–11	10–9	8–7	6–0	Max TRUE

Summary Statistics:	
Mean	26.70
Std. dev.	5.93
Median	B
Not Assessed:	
Male	104
Male %	7%
Female	236
Female %	6%
All	340
All %	6%
Total Enrolments:	
Male	1560
Female	4253
All	5813

