

LOTE

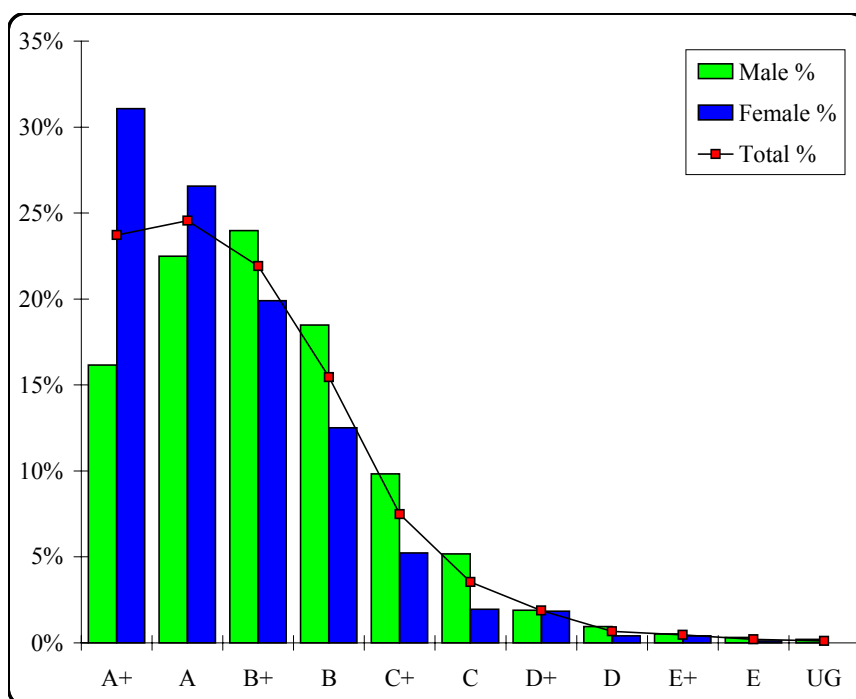
Chinese First Language

Graded Assessment 1 COURSEWORK UNIT 3

Table of Grade Distributions: male, female and all students assessed

GRADE	A+	A	B+	B	C+	C	D+	D	E+	E	UG	Total
Male	153	213	227	175	93	49	18	9	5	3	2	947
Male %	16%	22%	24%	18%	10%	5%	2%	1%	1%	0%	0%	100%
Female	303	259	194	122	51	19	18	4	4	1	0	975
Female %	31%	27%	20%	13%	5%	2%	2%	0%	0%	0%	0%	100%
Total	456	472	421	297	144	68	36	13	9	4	2	1922
Total %	24%	25%	22%	15%	7%	4%	2%	1%	0%	0%	0%	100%
Cumul %	24%	48%	70%	86%	93%	97%	99%	99%	100%	100%	100%	
Scaling Points	50–48	47–45	44–42	41–39	38–36	35–32	31–27	26–19	18–10	9–5	4–0	Max 50

Summary Statistics:	
Mean	43.29
Std. dev.	5.74
Median	B+
Not Assessed:	
Male	16
Male %	2%
Female	14
Female %	1%
All	30
All %	2%
Total Enrolments:	
Male	963
Female	989
All	1952



LOTE

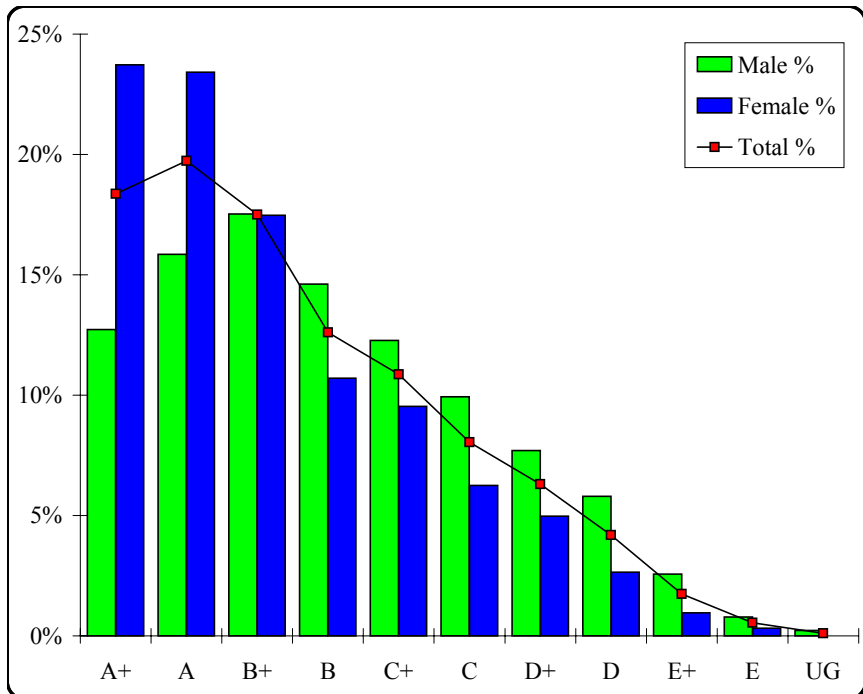
Chinese First Language

Graded Assessment 2 COURSEWORK UNIT 4

Table of Grade Distributions: male, female and all students assessed

GRADE	A+	A	B+	B	C+	C	D+	D	E+	E	UG	Total
Male	114	142	157	131	110	89	69	52	23	7	2	896
Male %	13%	16%	18%	15%	12%	10%	8%	6%	3%	1%	0%	100%
Female	224	221	165	101	90	59	47	25	9	3	0	944
Female %	24%	23%	17%	11%	10%	6%	5%	3%	1%	0%	0%	100%
Total	338	363	322	232	200	148	116	77	32	10	2	1840
Total %	18%	20%	18%	13%	11%	8%	6%	4%	2%	1%	0%	100%
Cumul %	18%	38%	56%	68%	79%	87%	93%	98%	99%	100%	100%	
Scaling Points	50–49	48–46	45–43	42–41	40–39	38–37	36–34	33–28	27–18	17–7	6–0	Max 50

Summary Statistics:	
Mean	42.60
Std. dev.	6.15
Median	B+
Not Assessed:	
Male	67
Male %	7%
Female	45
Female %	5%
All	112
All %	6%
Total Enrolments:	
Male	963
Female	989
All	1952



LOTE

Chinese First Language

Graded Assessment 3 ORAL AND WRITTEN EXAMINATION

Table of Grade Distributions: male, female and all students assessed

GRADE	A+	A	B+	B	C+	C	D+	D	E+	E	UG	Total
Male	69	158	197	170	140	88	38	8	2	3	5	878
Male %	8%	18%	22%	19%	16%	10%	4%	1%	0%	0%	1%	100%
Female	216	229	206	135	76	53	12	0	0	2	0	929
Female %	23%	25%	22%	15%	8%	6%	1%	0%	0%	0%	0%	100%
Total	285	387	403	305	216	141	50	8	2	5	5	1807
Total %	16%	21%	22%	17%	12%	8%	3%	0%	0%	0%	0%	100%
Cumul %	16%	37%	59%	76%	88%	96%	99%	99%	99%	100%	100%	
Scaling Points	200–163	162–153	152–144	143–135	134–125	124–110	109–85	84–60	59–40	39–20	19–0	Max 200

Summary Statistics:	
Mean	144.95
Std. dev.	20.20
Median	B+
Not Assessed:	
Male	85
Male %	9%
Female	60
Female %	6%
All	145
All %	7%
Total Enrolments:	
Male	963
Female	989
All	1952

