

# LOTE

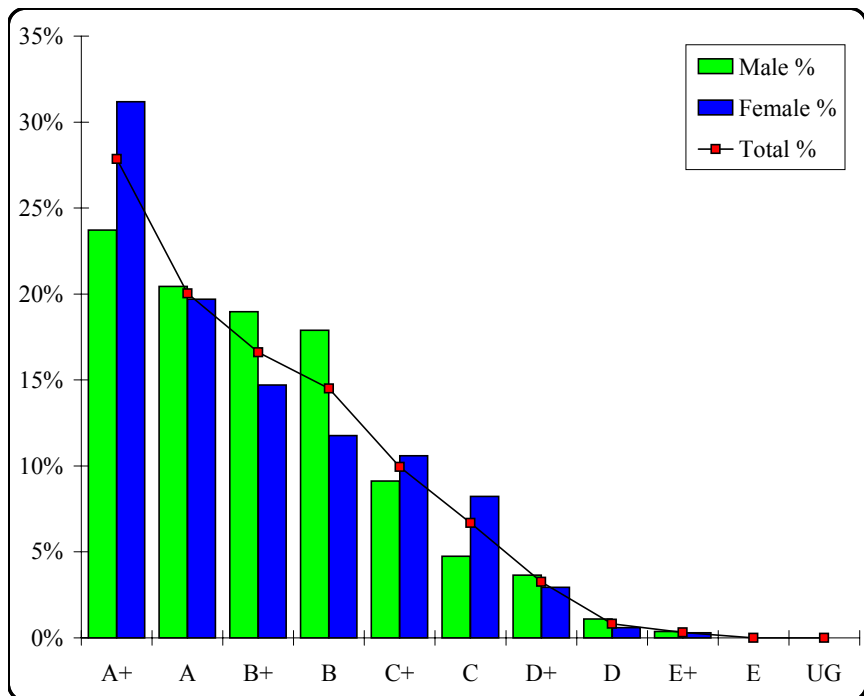
## Chinese Second Language

### Graded Assessment 1 COURSEWORK UNIT 3

Table of Grade Distributions: male, female and all students assessed

GRADE	A+	A	B+	B	C+	C	D+	D	E+	E	UG	Total
Male	65	56	52	49	25	13	10	3	1	0	0	274
Male %	24%	20%	19%	18%	9%	5%	4%	1%	0%	0%	0%	100%
Female	106	67	50	40	36	28	10	2	1	0	0	340
Female %	31%	20%	15%	12%	11%	8%	3%	1%	0%	0%	0%	100%
Total	171	123	102	89	61	41	20	5	2	0	0	614
Total %	28%	20%	17%	14%	10%	7%	3%	1%	0%	0%	0%	100%
Cumul %	28%	48%	64%	79%	89%	96%	99%	100%	100%	100%	100%	
Scaling Points	50–48	47–46	45–43	42–40	39–37	36–32	31–27	26–21	20–14	13–7	6–0	Max 50

Summary Statistics:	
Mean	43.44
Std. dev.	5.59
Median	B+
Not Assessed:	
Male	2
Male %	1%
Female	0
Female %	0%
All	2
All %	0%
Total Enrolments:	
Male	276
Female	340
All	616



# LOTE

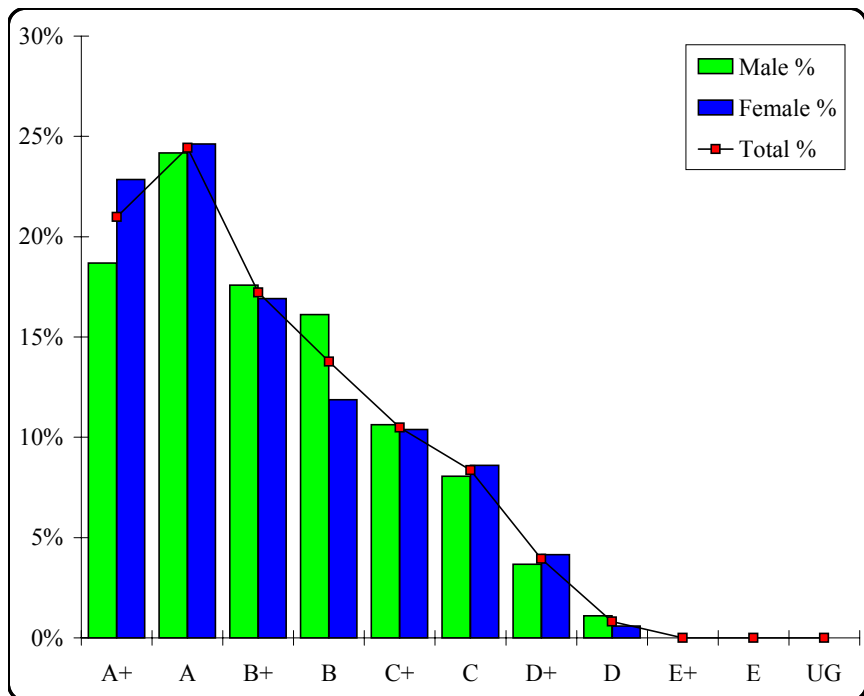
## Chinese Second Language

### Graded Assessment 2 COURSEWORK UNIT 4

Table of Grade Distributions: male, female and all students assessed

GRADE	A+	A	B+	B	C+	C	D+	D	E+	E	UG	Total
Male	51	66	48	44	29	22	10	3	0	0	0	273
Male %	19%	24%	18%	16%	11%	8%	4%	1%	0%	0%	0%	100%
Female	77	83	57	40	35	29	14	2	0	0	0	337
Female %	23%	25%	17%	12%	10%	9%	4%	1%	0%	0%	0%	100%
Total	128	149	105	84	64	51	24	5	0	0	0	610
Total %	21%	24%	17%	14%	10%	8%	4%	1%	0%	0%	0%	100%
Cumul %	21%	45%	63%	76%	87%	95%	99%	100%	100%	100%	100%	
Scaling Points	50–49	48–46	45–43	42–40	39–36	35–31	30–25	24–18	17–11	10–5	4–0	Max 50

Summary Statistics:	
Mean	43.18
Std. dev.	6.01
Median	B+
Not Assessed:	
Male	3
Male %	1%
Female	3
Female %	1%
All	6
All %	1%
Total Enrolments:	
Male	276
Female	340
All	616



# LOTE

## Chinese Second Language

### Graded Assessment 3 ORAL AND WRITTEN EXAMINATION

Table of Grade Distributions: male, female and all students assessed

GRADE	A+	A	B+	B	C+	C	D+	D	E+	E	UG	Total
Male	37	53	66	53	28	14	16	3	3	0	0	273
Male %	14%	19%	24%	19%	10%	5%	6%	1%	1%	0%	0%	100%
Female	55	67	65	61	45	26	11	6	1	0	0	337
Female %	16%	20%	19%	18%	13%	8%	3%	2%	0%	0%	0%	100%
Total	92	120	131	114	73	40	27	9	4	0	0	610
Total %	15%	20%	21%	19%	12%	7%	4%	1%	1%	0%	0%	100%
Cumul %	15%	35%	56%	75%	87%	93%	98%	99%	100%	100%	100%	
Scaling Points	400–374	373–355	354–325	324–279	278–236	235–198	197–150	149–106	105–60	59–40	39–0	Max 400

Summary Statistics:	
Mean	314.57
Std. dev.	64.65
Median	B+
Not Assessed:	
Male	3
Male %	1%
Female	3
Female %	1%
All	6
All %	1%
Total Enrolments:	
Male	276
Female	340
All	616

