

# LOTE

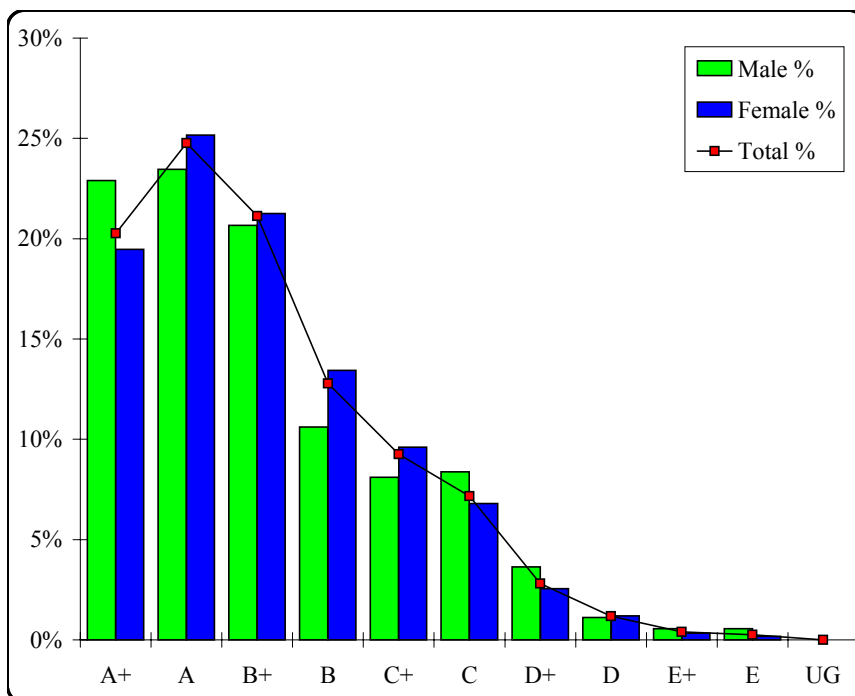
## French

### Graded Assessment 1 COURSEWORK UNIT 3

Table of Grade Distributions: male, female and all students assessed

GRADE	A+	A	B+	B	C+	C	D+	D	E+	E	UG	Total
Male	82	84	74	38	29	30	13	4	2	2	0	358
Male %	23%	23%	21%	11%	8%	8%	4%	1%	1%	1%	0%	100%
Female	229	296	250	158	113	80	30	14	4	2	0	1176
Female %	19%	25%	21%	13%	10%	7%	3%	1%	0%	0%	0%	100%
Total	311	380	324	196	142	110	43	18	6	4	0	1534
Total %	20%	25%	21%	13%	9%	7%	3%	1%	0%	0%	0%	100%
Cumul %	20%	45%	66%	79%	88%	95%	98%	99%	100%	100%	100%	
Scaling Points	50-46	45-41	40-37	36-34	33-31	30-27	26-24	23-21	20-12	11-6	5-0	Max 50

Summary Statistics:	
Mean	39.09
Std. dev.	6.96
Median	B+
Not Assessed:	
Male	4
Male %	1%
Female	6
Female %	1%
All	10
All %	1%
Total Enrolments:	
Male	362
Female	1182
All	1544



# LOTE

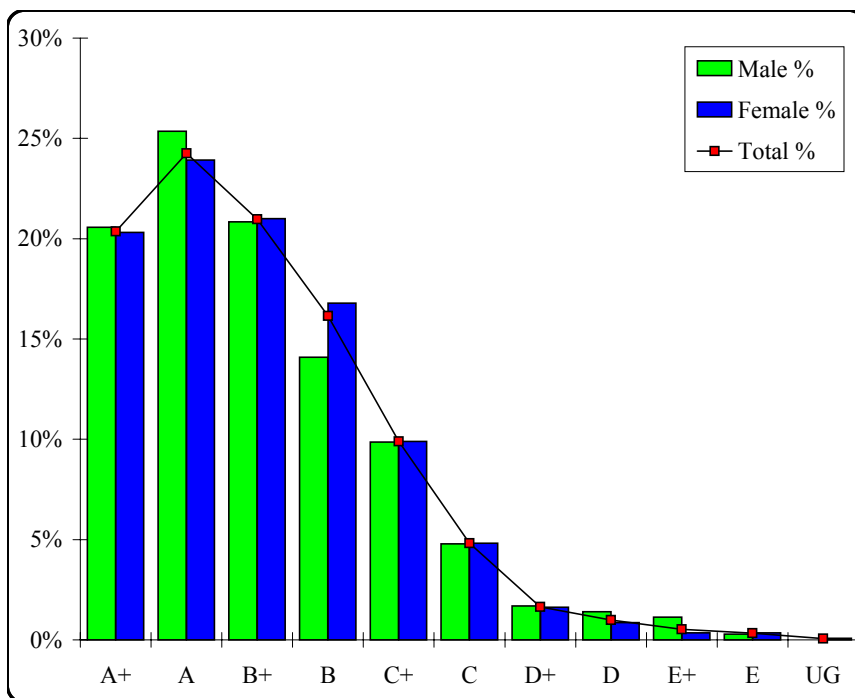
## French

### Graded Assessment 2 COURSEWORK UNIT 4

Table of Grade Distributions: male, female and all students assessed

GRADE	A+	A	B+	B	C+	C	D+	D	E+	E	UG	Total
Male	73	90	74	50	35	17	6	5	4	1	0	355
Male %	21%	25%	21%	14%	10%	5%	2%	1%	1%	0%	0%	100%
Female	236	278	244	195	115	56	19	10	4	4	1	1162
Female %	20%	24%	21%	17%	10%	5%	2%	1%	0%	0%	0%	100%
Total	309	368	318	245	150	73	25	15	8	5	1	1517
Total %	20%	24%	21%	16%	10%	5%	2%	1%	1%	0%	0%	100%
Cumul %	20%	45%	66%	82%	92%	96%	98%	99%	100%	100%	100%	
Scaling Points	50–47	46–42	41–38	37–34	33–30	29–27	26–25	24–22	21–9	8–5	4–0	Max 50

Summary Statistics:	
Mean	39.85
Std. dev.	7.04
Median	B+
Not Assessed:	
Male	7
Male %	2%
Female	20
Female %	2%
All	27
All %	2%
Total Enrolments:	
Male	362
Female	1182
All	1544



# LOTE

## French

### Graded Assessment 3 ORAL AND WRITTEN EXAMINATION

Table of Grade Distributions: male, female and all students assessed

GRADE	A+	A	B+	B	C+	C	D+	D	E+	E	UG	Total
Male	53	67	69	76	47	29	7	3	1	0	1	353
Male %	15%	19%	20%	22%	13%	8%	2%	1%	0%	0%	0%	100%
Female	149	210	238	255	169	80	40	16	1	1	0	1159
Female %	13%	18%	21%	22%	15%	7%	3%	1%	0%	0%	0%	100%
Total	202	277	307	331	216	109	47	19	2	1	1	1512
Total %	13%	18%	20%	22%	14%	7%	3%	1%	0%	0%	0%	100%
Cumul %	13%	32%	52%	74%	88%	95%	98%	100%	100%	100%	100%	
Scaling Points	400–335	334–297	296–257	256–216	215–178	177–137	136–110	109–80	79–60	59–40	39–0	Max 400

Summary Statistics:	
Mean	257.76
Std. dev.	66.69
Median	B+
Not Assessed:	
Male	9
Male %	2%
Female	23
Female %	2%
All	32
All %	2%
Total Enrolments:	
Male	362
Female	1182
All	1544

