

# LOTE

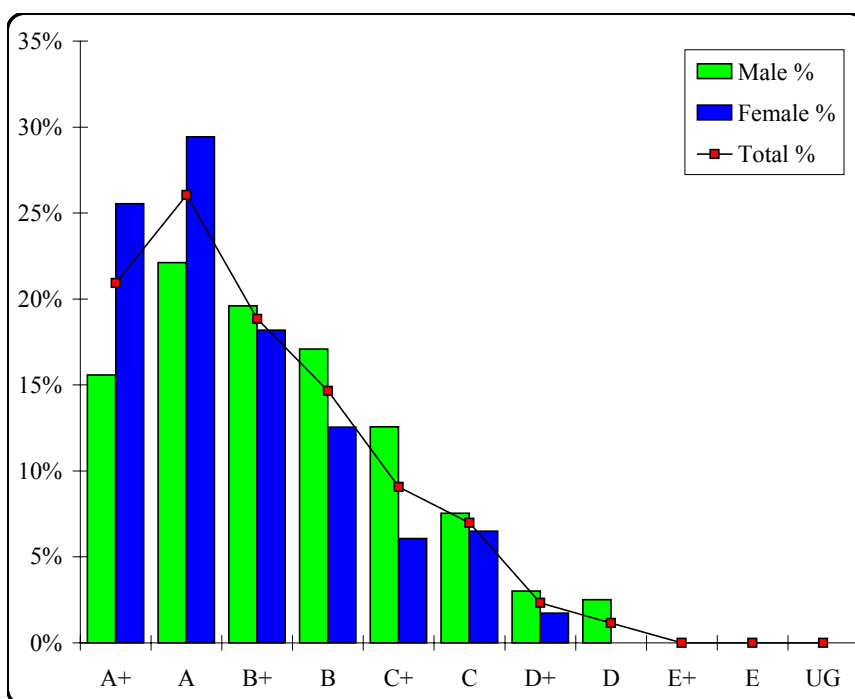
## Greek

### Graded Assessment 1 COURSEWORK UNIT 3

Table of Grade Distributions: male, female and all students assessed

GRADE	A+	A	B+	B	C+	C	D+	D	E+	E	UG	Total
Male	31	44	39	34	25	15	6	5	0	0	0	199
Male %	16%	22%	20%	17%	13%	8%	3%	3%	0%	0%	0%	100%
Female	59	68	42	29	14	15	4	0	0	0	0	231
Female %	26%	29%	18%	13%	6%	6%	2%	0%	0%	0%	0%	100%
Total	90	112	81	63	39	30	10	5	0	0	0	430
Total %	21%	26%	19%	15%	9%	7%	2%	1%	0%	0%	0%	100%
Cumul %	21%	47%	66%	80%	90%	97%	99%	100%	100%	100%	100%	
Scaling Points	50–47	46–43	42–40	39–37	36–33	32–26	25–20	19–15	14–10	9–5	4–0	Max 50

Summary Statistics:	
Mean	41.03
Std. dev.	6.54
Median	B+
Not Assessed:	
Male	1
Male %	1%
Female	1
Female %	0%
All	2
All %	0%
Total Enrolments:	
Male	200
Female	232
All	432



# LOTE

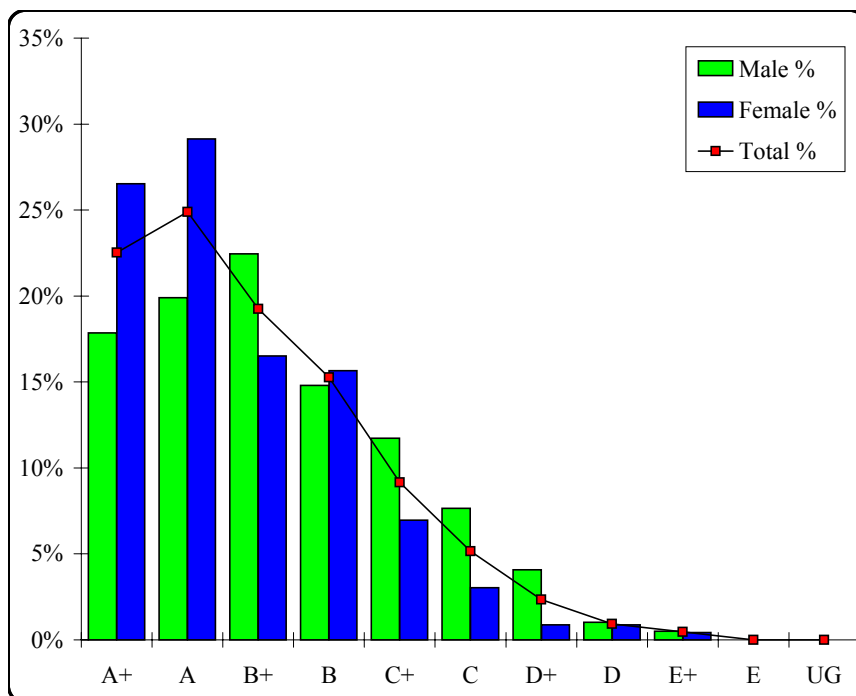
## Greek

### Graded Assessment 2 COURSEWORK UNIT 4

Table of Grade Distributions: male, female and all students assessed

GRADE	A+	A	B+	B	C+	C	D+	D	E+	E	UG	Total
Male	35	39	44	29	23	15	8	2	1	0	0	196
Male %	18%	20%	22%	15%	12%	8%	4%	1%	1%	0%	0%	100%
Female	61	67	38	36	16	7	2	2	1	0	0	230
Female %	27%	29%	17%	16%	7%	3%	1%	1%	0%	0%	0%	100%
Total	96	106	82	65	39	22	10	4	2	0	0	426
Total %	23%	25%	19%	15%	9%	5%	2%	1%	0%	0%	0%	100%
Cumul %	23%	47%	67%	82%	91%	96%	99%	100%	100%	100%	100%	
Scaling Points	50–47	46–43	42–40	39–35	34–30	29–26	25–21	20–16	15–10	9–5	4–0	Max 50

Summary Statistics:	
Mean	40.83
Std. dev.	7.13
Median	B+
Not Assessed:	
Male	4
Male %	2%
Female	2
Female %	1%
All	6
All %	1%
Total Enrolments:	
Male	200
Female	232
All	432



# LOTE

## Greek

### Graded Assessment 3 ORAL AND WRITTEN EXAMINATION

Table of Grade Distributions: male, female and all students assessed

GRADE	A+	A	B+	B	C+	C	D+	D	E+	E	UG	Total
Male	22	38	44	37	28	13	6	2	3	1	0	194
Male %	11%	20%	23%	19%	14%	7%	3%	1%	2%	1%	0%	100%
Female	48	51	56	42	22	6	3	1	0	0	0	229
Female %	21%	22%	24%	18%	10%	3%	1%	0%	0%	0%	0%	100%
Total	70	89	100	79	50	19	9	3	3	1	0	423
Total %	17%	21%	24%	19%	12%	4%	2%	1%	1%	0%	0%	100%
Cumul %	17%	38%	61%	80%	92%	96%	98%	99%	100%	100%	100%	
Scaling Points	400–356	355–326	325–293	292–250	249–210	209–160	159–100	99–77	76–60	59–40	39–0	Max 400

Summary Statistics:	
Mean	296.58
Std. dev.	63.81
Median	B+
Not Assessed:	
Male	6
Male %	3%
Female	3
Female %	1%
All	9
All %	2%
Total Enrolments:	
Male	200
Female	232
All	432

