

LOTE

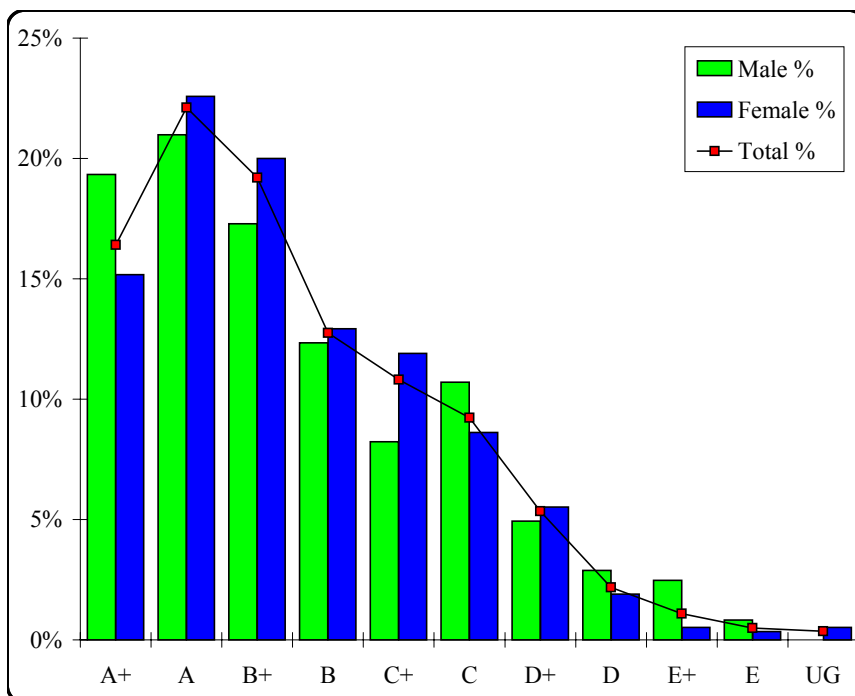
Italian

Graded Assessment 1 COURSEWORK UNIT 3

Table of Grade Distributions: male, female and all students assessed

GRADE	A+	A	B+	B	C+	C	D+	D	E+	E	UG	Total
Male	47	51	42	30	20	26	12	7	6	2	0	243
Male %	19%	21%	17%	12%	8%	11%	5%	3%	2%	1%	0%	100%
Female	88	131	116	75	69	50	32	11	3	2	3	580
Female %	15%	23%	20%	13%	12%	9%	6%	2%	1%	0%	1%	100%
Total	135	182	158	105	89	76	44	18	9	4	3	823
Total %	16%	22%	19%	13%	11%	9%	5%	2%	1%	0%	0%	100%
Cumul %	16%	39%	58%	70%	81%	91%	96%	98%	99%	100%	100%	
Scaling Points	50–46	45–41	40–37	36–34	33–31	30–28	27–23	22–18	17–13	12–5	4–0	Max 50

Summary Statistics:	
Mean	37.41
Std. dev.	8.06
Median	B+
Not Assessed:	
Male	1
Male %	0%
Female	3
Female %	1%
All	4
All %	0%
Total Enrolments:	
Male	244
Female	583
All	827



LOTE

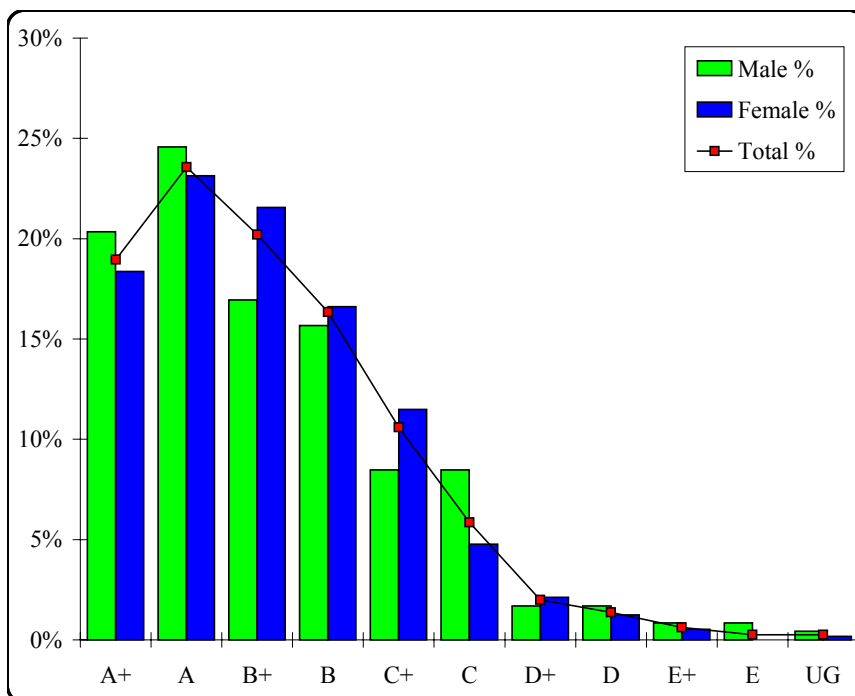
Italian

Graded Assessment 2 COURSEWORK UNIT 4

Table of Grade Distributions: male, female and all students assessed

GRADE	A+	A	B+	B	C+	C	D+	D	E+	E	UG	Total
Male	48	58	40	37	20	20	4	4	2	2	1	236
Male %	20%	25%	17%	16%	8%	8%	2%	2%	1%	1%	0%	100%
Female	104	131	122	94	65	27	12	7	3	0	1	566
Female %	18%	23%	22%	17%	11%	5%	2%	1%	1%	0%	0%	100%
Total	152	189	162	131	85	47	16	11	5	2	2	802
Total %	19%	24%	20%	16%	11%	6%	2%	1%	1%	0%	0%	100%
Cumul %	19%	43%	63%	79%	90%	96%	98%	99%	100%	100%	100%	
Scaling Points	50–46	45–41	40–37	36–33	32–29	28–25	24–22	21–19	18–15	14–8	7–0	Max 50

Summary Statistics:	
Mean	38.26
Std. dev.	7.61
Median	B+
Not Assessed:	
Male	8
Male %	3%
Female	17
Female %	3%
All	25
All %	3%
Total Enrolments:	
Male	244
Female	583
All	827



LOTE

Italian

Graded Assessment 3 ORAL AND WRITTEN EXAMINATION

Table of Grade Distributions: male, female and all students assessed

GRADE	A+	A	B+	B	C+	C	D+	D	E+	E	UG	Total
Male	32	27	44	35	35	31	14	8	3	2	2	233
Male %	14%	12%	19%	15%	15%	13%	6%	3%	1%	1%	1%	100%
Female	56	69	93	114	98	71	41	13	2	4	2	563
Female %	10%	12%	17%	20%	17%	13%	7%	2%	0%	1%	0%	100%
Total	88	96	137	149	133	102	55	21	5	6	4	796
Total %	11%	12%	17%	19%	17%	13%	7%	3%	1%	1%	1%	100%
Cumul %	11%	23%	40%	59%	76%	89%	95%	98%	99%	99%	100%	
Scaling Points	400-313	312-284	283-251	250-215	214-180	179-140	139-100	99-70	69-52	51-40	39-0	Max 400

Summary Statistics:	
Mean	227.02
Std. dev.	69.80
Median	B
Not Assessed:	
Male	11
Male %	5%
Female	20
Female %	3%
All	31
All %	4%
Total Enrolments:	
Male	244
Female	583
All	827

