

LOTE

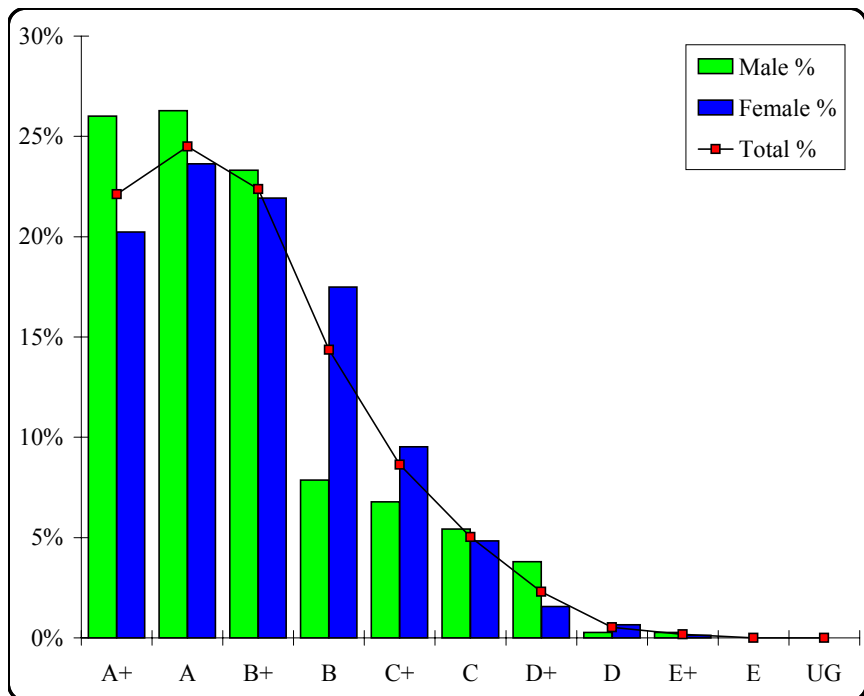
Japanese Second Language

Graded Assessment 1 COURSEWORK UNIT 3

Table of Grade Distributions: male, female and all students assessed

GRADE	A+	A	B+	B	C+	C	D+	D	E+	E	UG	Total
Male	96	97	86	29	25	20	14	1	1	0	0	369
Male %	26%	26%	23%	8%	7%	5%	4%	0%	0%	0%	0%	100%
Female	155	181	168	134	73	37	12	5	1	0	0	766
Female %	20%	24%	22%	17%	10%	5%	2%	1%	0%	0%	0%	100%
Total	251	278	254	163	98	57	26	6	2	0	0	1135
Total %	22%	24%	22%	14%	9%	5%	2%	1%	0%	0%	0%	100%
Cumul %	22%	47%	69%	83%	92%	97%	99%	100%	100%	100%	100%	
Scaling Points	50–46	45–41	40–37	36–34	33–31	30–28	27–24	23–17	16–11	10–5	4–0	Max 50

Summary Statistics:	
Mean	39.81
Std. dev.	6.45
Median	B+
Not Assessed:	
Male	1
Male %	0%
Female	2
Female %	0%
All	3
All %	0%
Total Enrolments:	
Male	370
Female	768
All	1138



LOTE

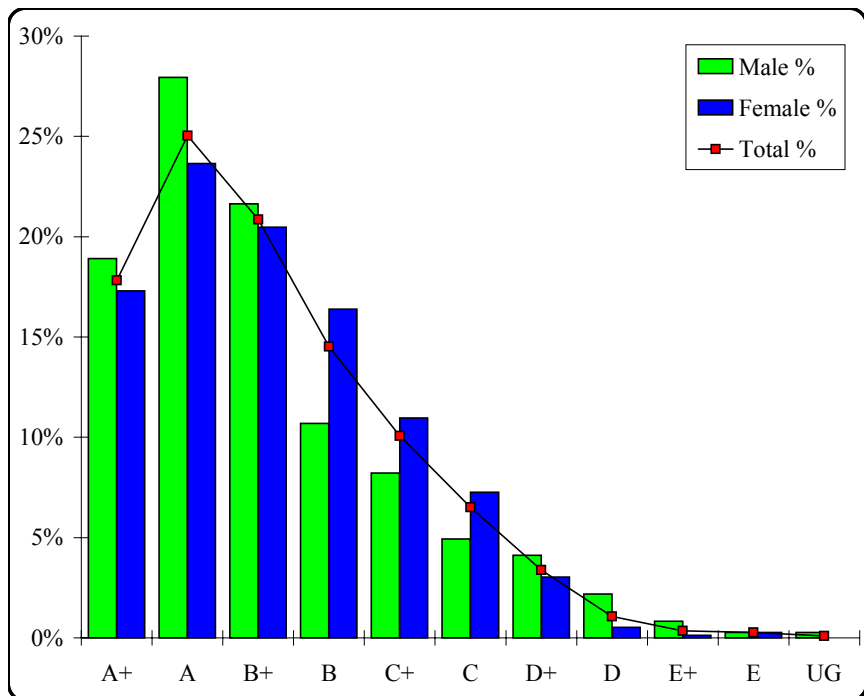
Japanese Second Language

Graded Assessment 2 COURSEWORK UNIT 4

Table of Grade Distributions: male, female and all students assessed

GRADE	A+	A	B+	B	C+	C	D+	D	E+	E	UG	Total
Male	69	102	79	39	30	18	15	8	3	1	1	365
Male %	19%	28%	22%	11%	8%	5%	4%	2%	1%	0%	0%	100%
Female	131	179	155	124	83	55	23	4	1	2	0	757
Female %	17%	24%	20%	16%	11%	7%	3%	1%	0%	0%	0%	100%
Total	200	281	234	163	113	73	38	12	4	3	1	1122
Total %	18%	25%	21%	15%	10%	7%	3%	1%	0%	0%	0%	100%
Cumul %	18%	43%	64%	78%	88%	95%	98%	99%	100%	100%	100%	
Scaling Points	50–48	47–42	41–38	37–35	34–32	31–29	28–25	24–21	20–16	15–10	9–0	Max 50

Summary Statistics:	
Mean	39.85
Std. dev.	6.99
Median	B+
Not Assessed:	
Male	5
Male %	1%
Female	11
Female %	1%
All	16
All %	1%
Total Enrolments:	
Male	370
Female	768
All	1138



LOTE

Japanese Second Language

Graded Assessment 3 ORAL AND WRITTEN EXAMINATION

Table of Grade Distributions: male, female and all students assessed

GRADE	A+	A	B+	B	C+	C	D+	D	E+	E	UG	Total
Male	57	105	91	40	29	21	11	3	1	1	2	361
Male %	16%	29%	25%	11%	8%	6%	3%	1%	0%	0%	1%	100%
Female	103	158	191	148	80	52	15	8	2	0	0	757
Female %	14%	21%	25%	20%	11%	7%	2%	1%	0%	0%	0%	100%
Total	160	263	282	188	109	73	26	11	3	1	2	1118
Total %	14%	24%	25%	17%	10%	7%	2%	1%	0%	0%	0%	100%
Cumul %	14%	38%	63%	80%	90%	96%	98%	99%	100%	100%	100%	
Scaling Points	400–314	313–248	247–193	192–160	159–128	127–95	94–75	74–60	59–50	49–40	39–0	Max 400

Summary Statistics:	
Mean	224.04
Std. dev.	76.30
Median	B+
Not Assessed:	
Male	9
Male %	2%
Female	11
Female %	1%
All	20
All %	2%
Total Enrolments:	
Male	370
Female	768
All	1138

