

LOTE

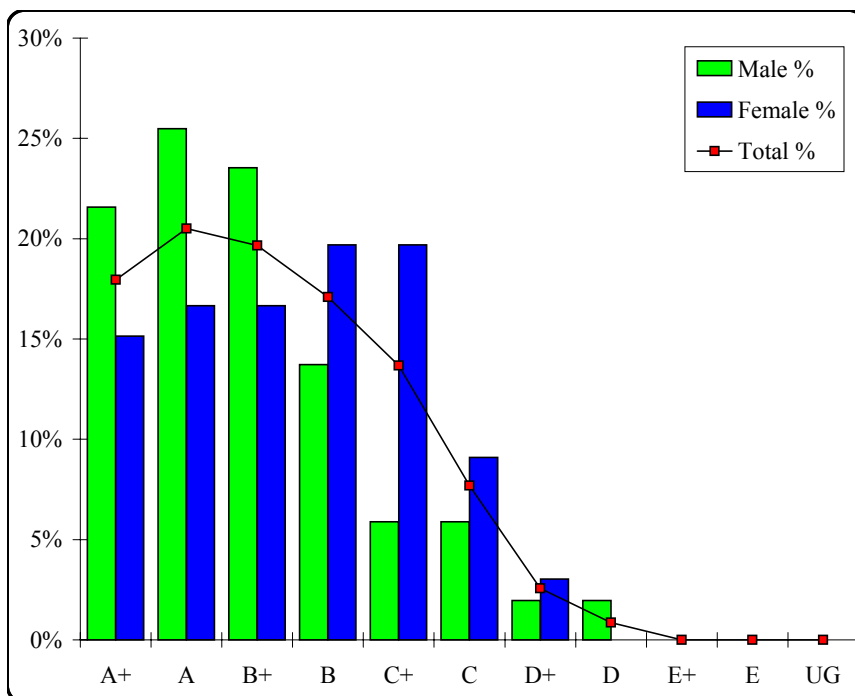
Macedonian

Graded Assessment 1 COURSEWORK UNIT 3

Table of Grade Distributions: male, female and all students assessed

GRADE	A+	A	B+	B	C+	C	D+	D	E+	E	UG	Total
Male	11	13	12	7	3	3	1	1	0	0	0	51
Male %	22%	25%	24%	14%	6%	6%	2%	2%	0%	0%	0%	100%
Female	10	11	11	13	13	6	2	0	0	0	0	66
Female %	15%	17%	17%	20%	20%	9%	3%	0%	0%	0%	0%	100%
Total	21	24	23	20	16	9	3	1	0	0	0	117
Total %	18%	21%	20%	17%	14%	8%	3%	1%	0%	0%	0%	100%
Cumul %	18%	38%	58%	75%	89%	97%	99%	100%	100%	100%	100%	
Scaling Points	50–49	48–45	44–41	40–38	37–34	33–28	27–22	21–15	14–10	9–5	4–0	Max 50

Summary Statistics:	
Mean	41.45
Std. dev.	6.52
Median	B+
Not Assessed:	
Male	0
Male %	0%
Female	0
Female %	0%
All	0
All %	0%
Total Enrolments:	
Male	51
Female	66
All	117



LOTE

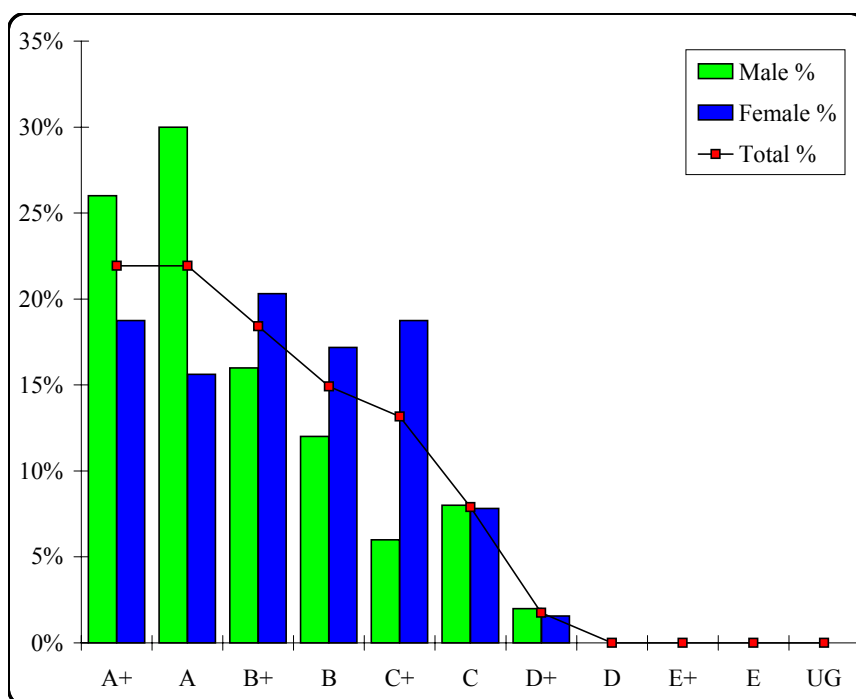
Macedonian

Graded Assessment 2 COURSEWORK UNIT 4

Table of Grade Distributions: male, female and all students assessed

GRADE	A+	A	B+	B	C+	C	D+	D	E+	E	UG	Total
Male	13	15	8	6	3	4	1	0	0	0	0	50
Male %	26%	30%	16%	12%	6%	8%	2%	0%	0%	0%	0%	100%
Female	12	10	13	11	12	5	1	0	0	0	0	64
Female %	19%	16%	20%	17%	19%	8%	2%	0%	0%	0%	0%	100%
Total	25	25	21	17	15	9	2	0	0	0	0	114
Total %	22%	22%	18%	15%	13%	8%	2%	0%	0%	0%	0%	100%
Cumul %	22%	44%	62%	77%	90%	98%	100%	100%	100%	100%	100%	
Scaling Points	50–49	48–46	45–42	41–38	37–34	33–27	26–20	19–15	14–10	9–5	4–0	Max 50

Summary Statistics:	
Mean	42.69
Std. dev.	6.29
Median	B+
Not Assessed:	
Male	1
Male %	2%
Female	2
Female %	3%
All	3
All %	3%
Total Enrolments:	
Male	51
Female	66
All	117



LOTE

Macedonian

Graded Assessment 3 ORAL AND WRITTEN EXAMINATION

Table of Grade Distributions: male, female and all students assessed

GRADE	A+	A	B+	B	C+	C	D+	D	E+	E	UG	Total
Male	9	10	13	10	4	2	1	1	0	0	0	50
Male %	18%	20%	26%	20%	8%	4%	2%	2%	0%	0%	0%	100%
Female	7	9	16	13	7	6	3	3	0	0	0	64
Female %	11%	14%	25%	20%	11%	9%	5%	5%	0%	0%	0%	100%
Total	16	19	29	23	11	8	4	4	0	0	0	114
Total %	14%	17%	25%	20%	10%	7%	4%	4%	0%	0%	0%	100%
Cumul %	14%	31%	56%	76%	86%	93%	96%	100%	100%	100%	100%	
Scaling Points	400–358	357–334	333–288	287–240	239–220	219–190	189–144	143–106	105–86	85–50	49–0	Max 400

Summary Statistics:	
Mean	288.39
Std. dev.	66.86
Median	B+
Not Assessed:	
Male	1
Male %	2%
Female	2
Female %	3%
All	3
All %	3%
Total Enrolments:	
Male	51
Female	66
All	117

