

# LOTE

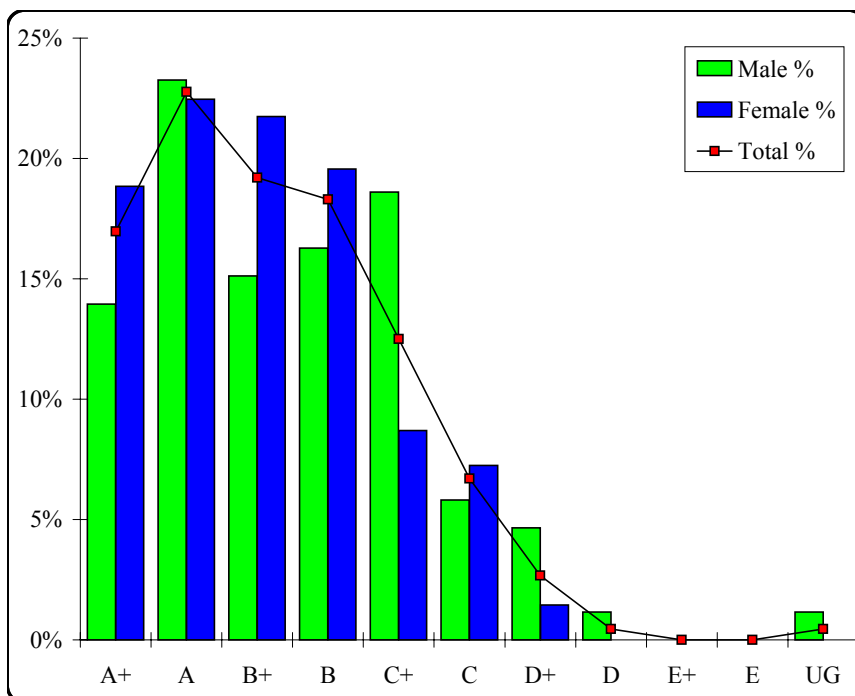
## Turkish

### Graded Assessment 1 COURSEWORK UNIT 3

Table of Grade Distributions: male, female and all students assessed

GRADE	A+	A	B+	B	C+	C	D+	D	E+	E	UG	Total
Male	12	20	13	14	16	5	4	1	0	0	1	86
Male %	14%	23%	15%	16%	19%	6%	5%	1%	0%	0%	1%	100%
Female	26	31	30	27	12	10	2	0	0	0	0	138
Female %	19%	22%	22%	20%	9%	7%	1%	0%	0%	0%	0%	100%
Total	38	51	43	41	28	15	6	1	0	0	1	224
Total %	17%	23%	19%	18%	13%	7%	3%	0%	0%	0%	0%	100%
Cumul %	17%	40%	59%	77%	90%	96%	99%	100%	100%	100%	100%	
Scaling Points	50–47	46–43	42–40	39–37	36–34	33–30	29–22	21–15	14–10	9–5	4–0	Max 50

Summary Statistics:	
Mean	40.56
Std. dev.	6.22
Median	B+
Not Assessed:	
Male	0
Male %	0%
Female	0
Female %	0%
All	0
All %	0%
Total Enrolments:	
Male	86
Female	138
All	224



# LOTE

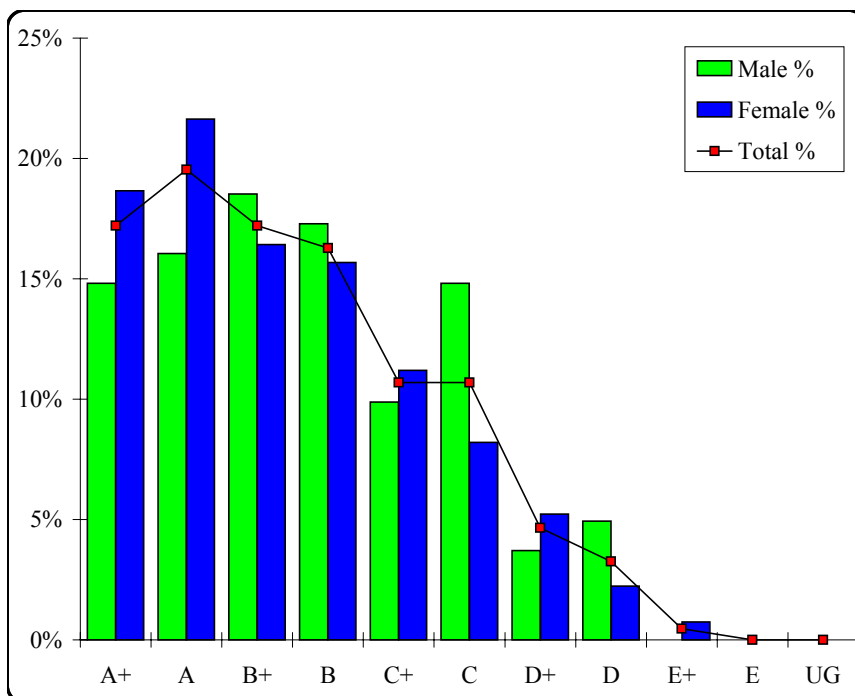
## Turkish

### Graded Assessment 2 COURSEWORK UNIT 4

Table of Grade Distributions: male, female and all students assessed

GRADE	A+	A	B+	B	C+	C	D+	D	E+	E	UG	Total
Male	12	13	15	14	8	12	3	4	0	0	0	81
Male %	15%	16%	19%	17%	10%	15%	4%	5%	0%	0%	0%	100%
Female	25	29	22	21	15	11	7	3	1	0	0	134
Female %	19%	22%	16%	16%	11%	8%	5%	2%	1%	0%	0%	100%
Total	37	42	37	35	23	23	10	7	1	0	0	215
Total %	17%	20%	17%	16%	11%	11%	5%	3%	0%	0%	0%	100%
Cumul %	17%	37%	54%	70%	81%	92%	96%	100%	100%	100%	100%	
Scaling Points	50–47	46–43	42–40	39–37	36–35	34–32	31–29	28–23	22–16	15–8	7–0	Max 50

Summary Statistics:	
Mean	39.99
Std. dev.	6.07
Median	B+
Not Assessed:	
Male	5
Male %	6%
Female	4
Female %	3%
All	9
All %	4%
Total Enrolments:	
Male	86
Female	138
All	224



# LOTE

## Turkish

### Graded Assessment 3 ORAL AND WRITTEN EXAMINATION

Table of Grade Distributions: male, female and all students assessed

GRADE	A+	A	B+	B	C+	C	D+	D	E+	E	UG	Total
Male	7	13	17	21	15	6	2	1	0	0	0	82
Male %	9%	16%	21%	26%	18%	7%	2%	1%	0%	0%	0%	100%
Female	20	34	34	25	15	5	1	0	0	0	0	134
Female %	15%	25%	25%	19%	11%	4%	1%	0%	0%	0%	0%	100%
Total	27	47	51	46	30	11	3	1	0	0	0	216
Total %	13%	22%	24%	21%	14%	5%	1%	0%	0%	0%	0%	100%
Cumul %	13%	34%	58%	79%	93%	98%	100%	100%	100%	100%	100%	
Scaling Points	400–333	332–300	299–270	269–245	244–210	209–160	159–120	119–70	69–60	59–40	39–0	Max 400

Summary Statistics:	
Mean	277.89
Std. dev.	46.64
Median	B+
Not Assessed:	
Male	4
Male %	5%
Female	4
Female %	3%
All	8
All %	4%
Total Enrolments:	
Male	86
Female	138
All	224

