

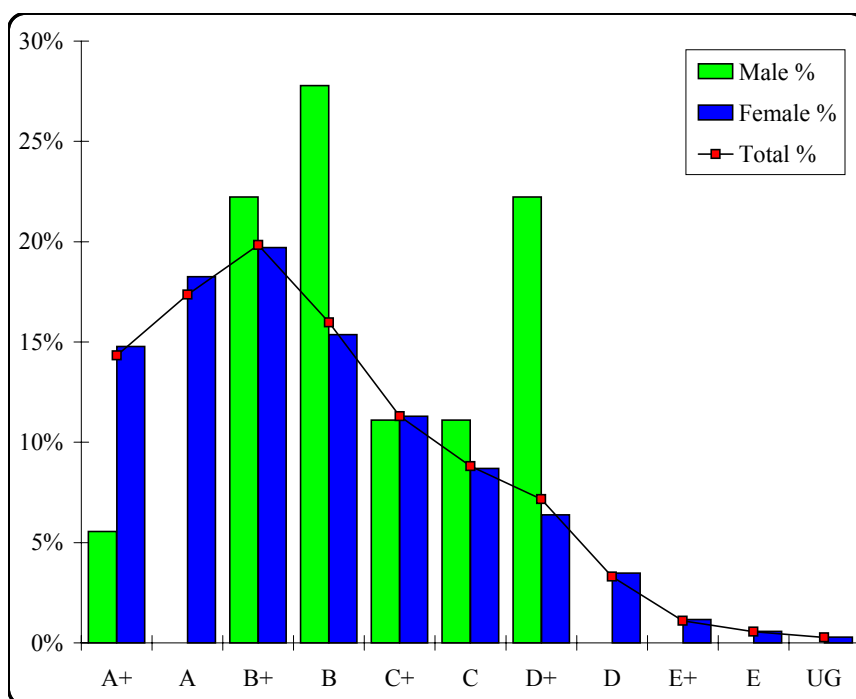
Community Services (Community Work)

Graded Assessment 1 COURSEWORK

Table of Grade Distributions: male, female and all students assessed

GRADE	A+	A	B+	B	C+	C	D+	D	E+	E	UG	Total
Male	1	0	4	5	2	2	4	0	0	0	0	18
Male %	6%	0%	22%	28%	11%	11%	22%	0%	0%	0%	0%	100%
Female	51	63	68	53	39	30	22	12	4	2	1	345
Female %	15%	18%	20%	15%	11%	9%	6%	3%	1%	1%	0%	100%
Total	52	63	72	58	41	32	26	12	4	2	1	363
Total %	14%	17%	20%	16%	11%	9%	7%	3%	1%	1%	0%	100%
Cumul %	14%	32%	52%	67%	79%	88%	95%	98%	99%	100%	100%	
Scaling Points	75–70	69–63	62–55	54–49	48–42	41–36	35–28	27–23	22–15	14–8	7–0	Max 75

Summary Statistics:	
Mean	53.62
Std. dev.	14.51
Median	B+
Not Assessed:	
Male	8
Male %	31%
Female	43
Female %	11%
All	51
All %	12%
Total Enrolments:	
Male	26
Female	388
All	414



Community Services (Community Work)

Graded Assessment 2 WRITTEN EXAMINATION

Table of Grade Distributions: male, female and all students assessed

GRADE	A+	A	B+	B	C+	C	D+	D	E+	E	UG	Total
Male	1	0	1	2	2	8	2	3	0	0	1	20
Male %	5%	0%	5%	10%	10%	40%	10%	15%	0%	0%	5%	100%
Female	12	36	50	66	74	47	42	17	5	5	0	354
Female %	3%	10%	14%	19%	21%	13%	12%	5%	1%	1%	0%	100%
Total	13	36	51	68	76	55	44	20	5	5	1	374
Total %	3%	10%	14%	18%	20%	15%	12%	5%	1%	1%	0%	100%
Cumul %	3%	13%	27%	45%	65%	80%	92%	97%	98%	100%	100%	
Scaling Points	204–164	163–148	147–136	135–122	121–108	107–90	89–75	74–60	59–40	39–20	19–0	Max 204

Summary Statistics:	
Mean	115.61
Std. dev.	29.28
Median	C+
Not Assessed:	
Male	6
Male %	23%
Female	34
Female %	9%
All	40
All %	10%
Total Enrolments:	
Male	26
Female	388
All	414

