

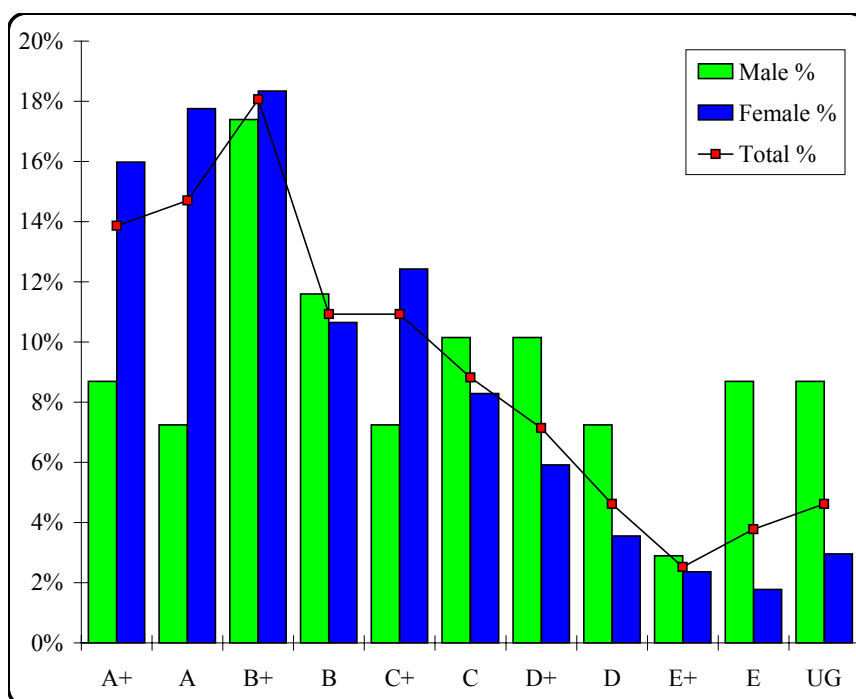
Hospitality (Commercial Cookery)

Graded Assessment 1 COURSEWORK

Table of Grade Distributions: male, female and all students assessed

GRADE	A+	A	B+	B	C+	C	D+	D	E+	E	UG	Total
Male	6	5	12	8	5	7	7	5	2	6	6	69
Male %	9%	7%	17%	12%	7%	10%	10%	7%	3%	9%	9%	100%
Female	27	30	31	18	21	14	10	6	4	3	5	169
Female %	16%	18%	18%	11%	12%	8%	6%	4%	2%	2%	3%	100%
Total	33	35	43	26	26	21	17	11	6	9	11	238
Total %	14%	15%	18%	11%	11%	9%	7%	5%	3%	4%	5%	100%
Cumul %	14%	29%	47%	58%	68%	77%	84%	89%	92%	95%	100%	
Scaling Points	75–68	67–60	59–52	51–45	44–38	37–32	31–26	25–20	19–14	13–8	7–0	Max 75

Summary Statistics:	
Mean	46.28
Std. dev.	19.22
Median	B
Not Assessed:	
Male	14
Male %	17%
Female	13
Female %	7%
All	27
All %	10%
Total Enrolments:	
Male	83
Female	182
All	265



Hospitality (Commercial Cookery)

Graded Assessment 2 WRITTEN EXAMINATION

Table of Grade Distributions: male, female and all students assessed

GRADE	A+	A	B+	B	C+	C	D+	D	E+	E	UG	Total
Male	0	0	0	2	9	14	24	17	6	2	0	74
Male %	0%	0%	0%	3%	12%	19%	32%	23%	8%	3%	0%	100%
Female	0	2	11	23	29	39	36	14	8	3	0	165
Female %	0%	1%	7%	14%	18%	24%	22%	8%	5%	2%	0%	100%
Total	0	2	11	25	38	53	60	31	14	5	0	239
Total %	0%	1%	5%	10%	16%	22%	25%	13%	6%	2%	0%	100%
Cumul %	0%	1%	5%	16%	32%	54%	79%	92%	98%	100%	100%	
Scaling Points	260–212	211–200	199–188	187–174	173–158	157–136	135–114	113–90	89–60	59–30	29–0	Max 260

Summary Statistics:	
Mean	138.29
Std. dev.	32.86
Median	C
Not Assessed:	
Male	9
Male %	11%
Female	17
Female %	9%
All	26
All %	10%
Total Enrolments:	
Male	83
Female	182
All	265

