

General Achievement Test 2023

Section A

Thursday 15 June 2023

Reading time: 9.00 am to 9.15 am (15 minutes)

Writing time: 9.15 am to 11.15 am (2 hours)

QUESTION BOOK

Structure of book

<i>Type of question</i>	<i>Number of questions to be answered</i>	<i>Suggested times (minutes)</i>
Writing task – Part 1	1	10
Writing task – Part 2	1	20
Multiple-choice questions – Numeracy	50	45
Multiple-choice questions – Literacy	50	45

- Students are permitted to bring into the examination room: pens, pencils, highlighters, erasers, sharpeners, rulers, an English and/or bilingual dictionary and one scientific calculator.
- Students are NOT permitted to bring into the examination room: blank sheets of paper and/or correction fluid/tape.

Materials supplied

- Question book of 68 pages
- Answer book for the writing tasks
- Answer page for multiple-choice questions on page 7 of the answer book

Instructions

- Write your **student number** in the space provided on the answer book.
- Write your **name** on the multiple-choice answer page on page 7 of the answer book.
- Follow the times suggested for each type of question.
- All written responses must be in English.

At the end of the test

- You may keep this question book.

Students are NOT permitted to bring mobile phones and/or any other unauthorised electronic devices into the examination room.

Writing Task

There are two parts to this writing section. Complete each part in the space provided in your answer book.

It is recommended you spend up to 10 minutes completing Part 1 and up to 20 minutes completing Part 2.

Your writing will be judged on how effectively you organise your ideas and express yourself in your responses.

Part 1

The following notice was posted on your local council's Community News web page.

The council wants to install two new solar-powered smart benches in the leafy environment of your local park.

The solar-powered smart benches will provide:

- charging points and free WIFI connection for laptops and phones
- information on temperature and maps to local facilities
- access to online games.

The council wants to know if there is support for the initiative and is inviting community feedback.

Due to copyright restrictions,
this material is not supplied.

As a frequent visitor to the park, write a short letter to post on the Feedback page of the council's website expressing your opinion about whether the council should install the solar-powered smart benches.

Part 2

Following community feedback about the installation of solar-powered smart benches, the council posted an update on their Community News web page.

After receiving positive feedback, the council has installed two solar-powered smart benches. A little-used barbecue area was removed to make way for the benches.

Members of the community have expressed concern about the removal of the barbecue area.

The following extract from the council's Annual Report was included in the update.

Council supports the following principles for our community and will seek to implement them in the next 12 months.

PRINCIPLES	COUNCIL STRATEGY
Healthy, connected communities	Maintain and further enhance the range of services available to local residents that support positive development for young people
Culturally rich and active communities	Promote opportunities to participate in leisure and recreation activities through the provision of facilities

Write a short opinion piece for your local newspaper in which you present your point of view about the removal of the barbecue area from the local park.

Give reasons for your point of view and refer to information in the extract from the council's Annual Report.

THIS PAGE IS INTENTIONALLY BLANK

MULTIPLE-CHOICE QUESTIONS – NUMERACY

Answer this section in the GAT ANSWER BOOK.

Mark your answers on the Multiple-Choice Answer Page.

You are advised to allocate 45 minutes to this task.

Answer **all** questions in pencil.

Shade your answers on the multiple-choice answer page (page 7) of the answer book.

Choose the response that is **correct**, or that **best answers the question**.

A correct answer scores 1; an incorrect answer scores 0.

Marks will not be deducted for incorrect answers.

No marks will be given if more than one answer is completed for any question.

Questions 1 and 2

During Daylight Saving Time, the time in Victoria is 1.5 hours ahead of the time in the Northern Territory.

For example, when it is 9:00 am in Victoria, it is 7:30 am in the Northern Territory.

1 During Daylight Saving Time, when it is 5:00 pm in Victoria, what is the time in the Northern Territory?

- A** 3:30 pm
- B** 3:50 pm
- C** 6:30 pm
- D** 6:50 pm

2 During Daylight Saving Time, the time in Victoria is 3 hours ahead of the time in Western Australia.

At 11:30 pm on 31 December in Western Australia, what is the time in Victoria?

- A** 2:30 am on 31 December
- B** 8:30 pm on 31 December
- C** 2:30 am on 1 January
- D** 8:30 pm on 1 January

Question 3

A store gives out 600 tickets to customers for a chance to win a shopping voucher.

The number of the winning ticket will be drawn randomly to determine the winner.

3 Finn has three of the tickets.

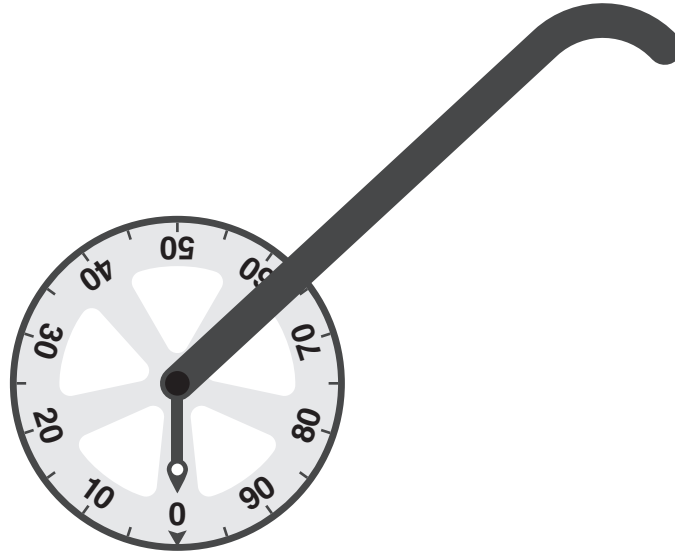
What is the chance of Finn winning the shopping voucher?

- A** 1 in 200
- B** 1 in 300
- C** 1 in 400
- D** 1 in 600

Question 4

Sam uses the trundle wheel shown below to measure the distance from the school entrance to his locker.

The scale on the wheel is in centimetres.



- 4 The wheel makes 12 full rotations and $\frac{1}{4}$ of a rotation.

What is the distance Sam measures?

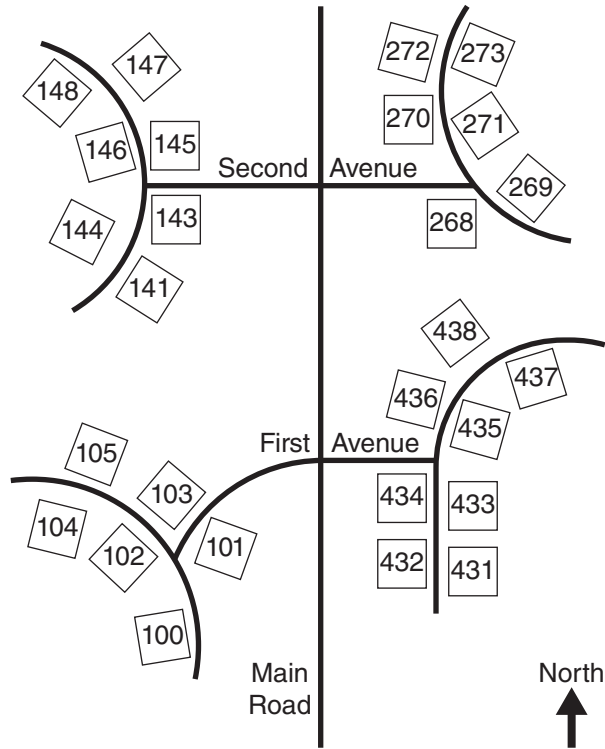
- A 12.25 metres
- B 12.75 metres
- C 122.5 metres
- D 1225 metres

Question 5

Deena is travelling to a party.

Deena has the map below and some simple instructions.

- Go north along Main Road
- Turn left at Second Avenue
- Turn right at the next intersection
- The party is at the second house on the left

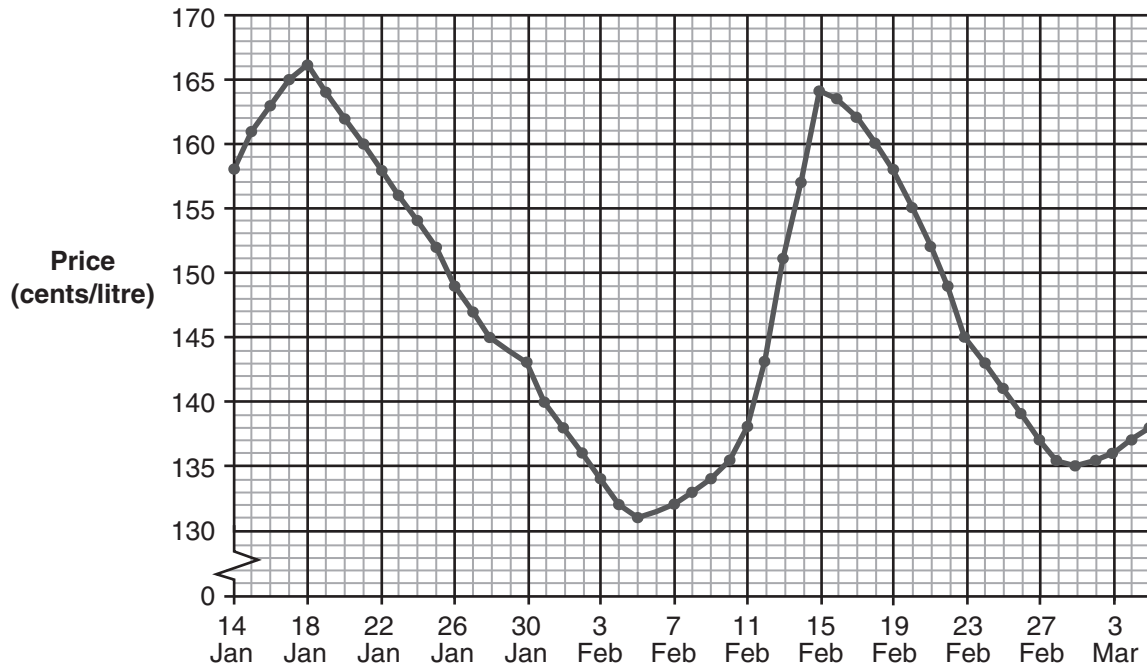


5 What is the house number of the party?

- A** 104
- B** 141
- C** 148
- D** 273

Questions 6 and 7

The chart below shows the petrol prices at one place in Melbourne over a period of 50 days.



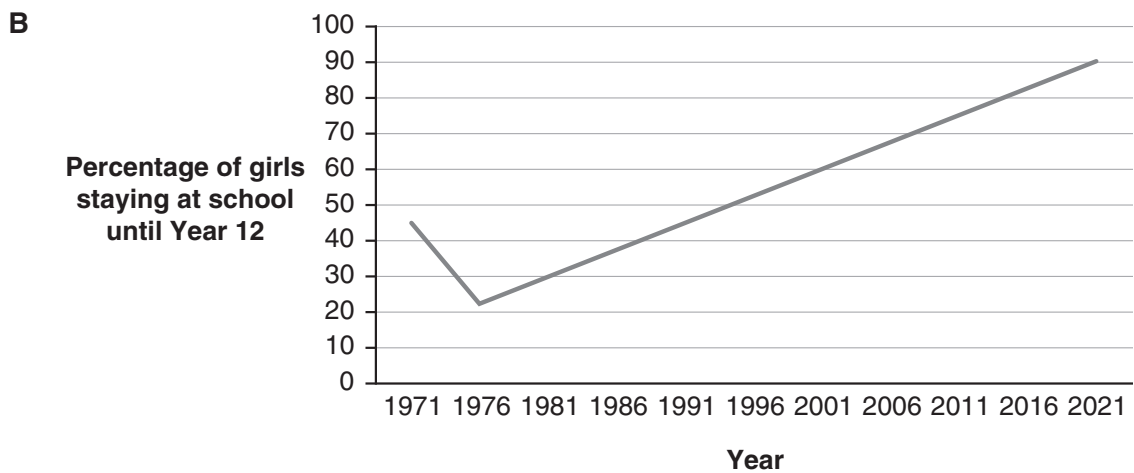
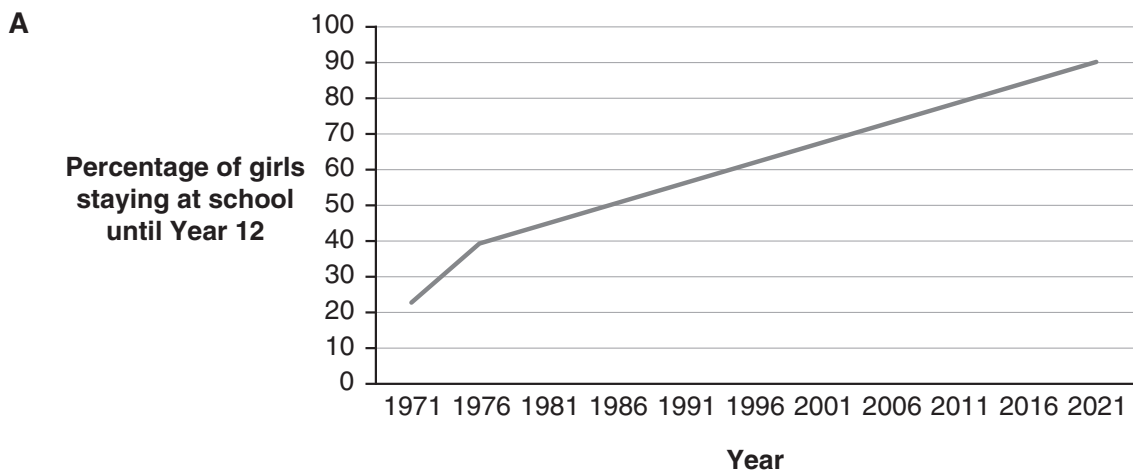
- 6 What is the difference between the lowest and highest petrol price over the period of the chart?
- A 29 cents/litre
 B 31 cents/litre
 C 33 cents/litre
 D 35 cents/litre
- 7 The average decrease in petrol price per day between 24 January and 1 February inclusive is closest to:
- A 1 cent/litre per day
 B 2 cents/litre per day
 C 4 cents/litre per day
 D 8 cents/litre per day

Question 8

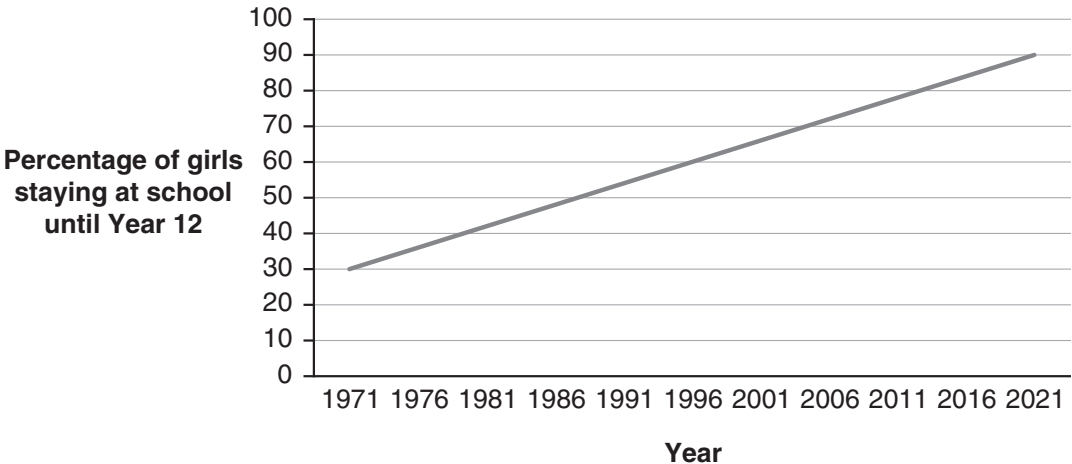
The quote below is from a report that describes the change in the percentage of girls who have stayed at school until Year 12.

‘From 1971 to 1976, the percentage of girls staying in school until Year 12 increased sharply. This level of Year 12 enrolment then gradually increased through to the high percentages we see in 2021.’

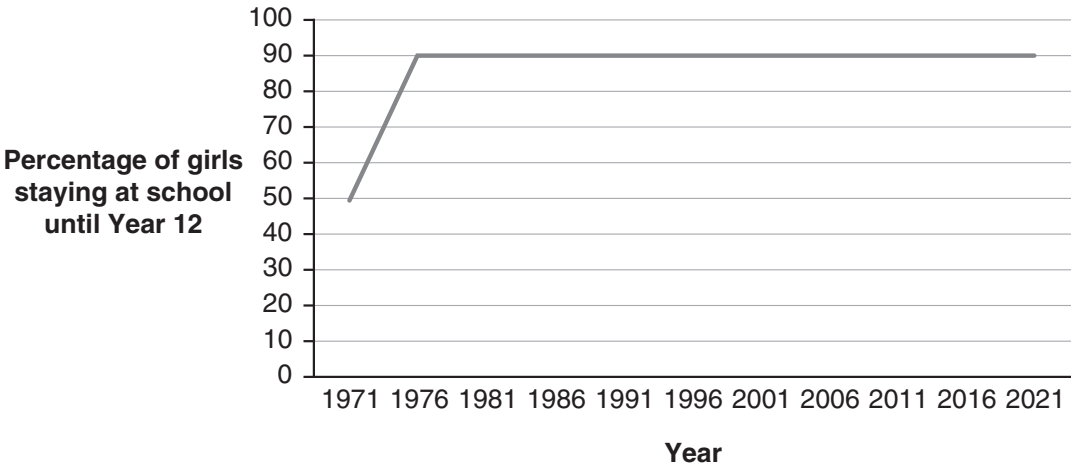
8 Which graph is a possible representation of the data referred to in the quote?



C



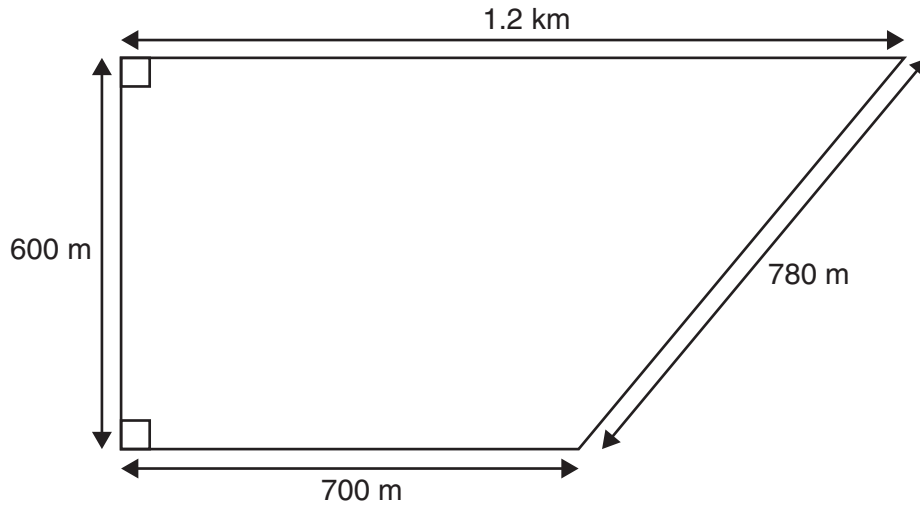
D



Questions 9 and 10

The plan below is of a proposed wildlife enclosure.

The cost of the fencing materials, including gates, is \$10 300 per kilometre.



9 Which of these is closest to the total cost of the fencing materials needed for the enclosure?

- A** \$8 000
- B** \$21 400
- C** \$22 660
- D** \$33 800

10 One hectare is equal to 10 000 square metres.

What is the area of the enclosure in hectares?

- A** 21.1 hectares
- B** 57.0 hectares
- C** 61.5 hectares
- D** 72.0 hectares

Questions 11 and 12

The excerpt below is from a newspaper article.

Science News Weekly

21 September 2020

Researchers have recently discovered a new planet. Its official name is K2-315b but it is called the 'Pi planet' for fun. This is because the planet orbits its star every 3.14 days.

11 The Earth orbits the Sun once every 365.256 days.

Which of the following is closest to the number of times the Pi planet orbits its star for every one time that the Earth orbits the Sun?

- A** 0.001 times
- B** 0.01 times
- C** 100 times
- D** 1 000 times

12 The Pi planet is located 185.3 light years away from Earth.

One light year is the distance light travels in a year.

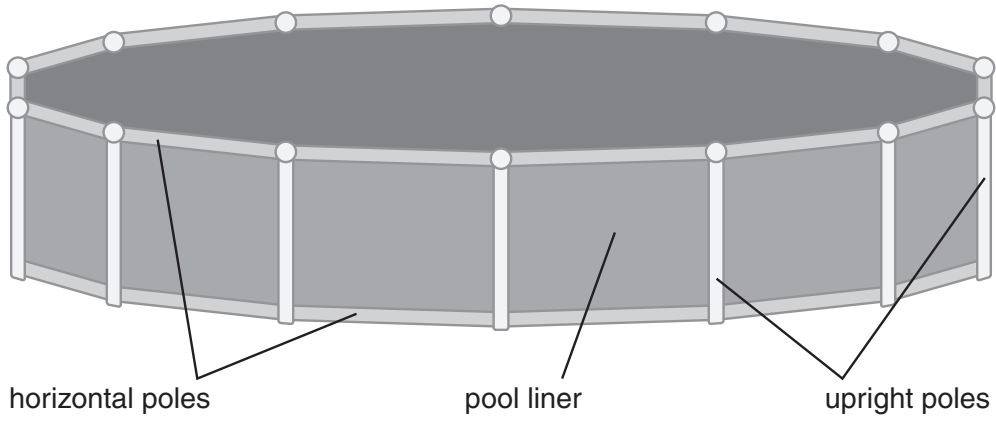
One light year is equal to 9.46×10^{12} km.

How far, in km, is the Earth from the Pi planet?

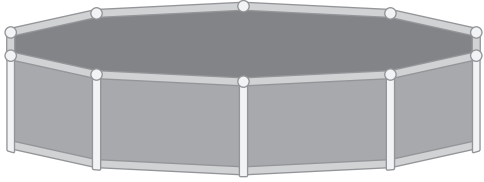
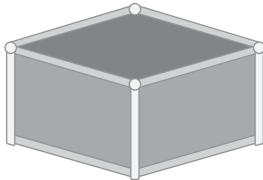
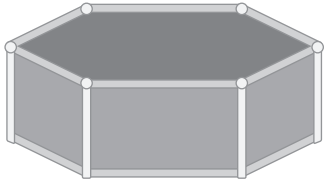
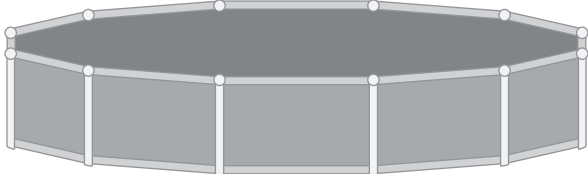
- A** 1.75×10^9 km
- B** 5.16×10^{10} km
- C** 5.16×10^{12} km
- D** 1.75×10^{15} km

Question 13

The image below is of an above-ground swimming pool.
It is constructed with a pool liner and poles.



13 Kim is assembling a swimming pool.
She has 12 poles and one liner.
Which pool can Kim assemble from these parts?

- A** 
- B** 
- C** 
- D** 

Questions 14 and 15

The brake pads in a car reduce in thickness over time.

Some drivers wear the brake pads down faster than other drivers.

- 14** Basam's car is fitted with new brake pads. New brake pads are 12 mm thick.

The thickness of the brake pads reduces by 1 mm for every 10 000 kilometres that Basam drives.

Basam will replace the brake pads when they are 5 mm thick.

Approximately how many kilometres can Basam drive before replacing the brake pads?

- A** 50 000 kilometres
 - B** 70 000 kilometres
 - C** 80 000 kilometres
 - D** 120 000 kilometres
- 15** When Sam's car was last serviced, the brake pads were 7 mm thick.
- The thickness of the brake pads reduces by 1 mm for every 3 000 kilometres that Sam drives.
- Sam drives approximately 12 000 kilometres between each service.
- How thick will the brake pads in Sam's car be at the next service?
- A** 1 mm
 - B** 3 mm
 - C** 4 mm
 - D** 7 mm

Question 16

The table below shows the cost of tins of paint of different sizes.

The size of each tin is given in litres (L).

Size of tin (L)	Cost (\$)
$\frac{1}{2}$	30.90
1	45.90
2	60.50
4	85.90
6	118.50
10	189.50

16 To the nearest cent, what is the cost per litre of the paint sold in the half-litre tin?

- A** \$15.45
- B** \$22.95
- C** \$53.85
- D** \$61.80

Question 17

A class is going to choose two charities to support from a list of five charities.

The names of three Australian charities and two overseas charities are put into a bag.

A student randomly selects the first charity from the bag.

It is an **overseas** charity.

The student does not return the name of the overseas charity to the bag.

17 What is the chance that the next charity chosen is also an **overseas** charity?

- A** $\frac{1}{5}$
- B** $\frac{1}{4}$
- C** $\frac{1}{3}$
- D** $\frac{1}{2}$

Question 18

The scale on a map is 1:150 000

18 On the map, the distance between two locations is 6 centimetres.

What is the actual distance between the two locations?

- A** 250 metres
- B** 900 metres
- C** 9 000 metres
- D** 25 000 metres

Questions 19 and 20

The braking distance of a car is the distance the car travels after the brakes are applied until it stops.

The braking distance (in metres) of a car on a wet surface can be estimated using the following rule:

Multiply the speed (in km/h) by itself and then divide by 167

19 The braking distance of a particular car on a wet surface is 15 metres.

Which of these is closest to the estimated speed at which the car was travelling when the driver applied the brakes?

- A** 30 km/h
- B** 33 km/h
- C** 50 km/h
- D** 65 km/h

20 A car is travelling at 80 km/h on a wet surface.

Another car is travelling at 100 km/h on the same surface.

Which of these is closest to the difference in the estimated braking distances of the two cars?

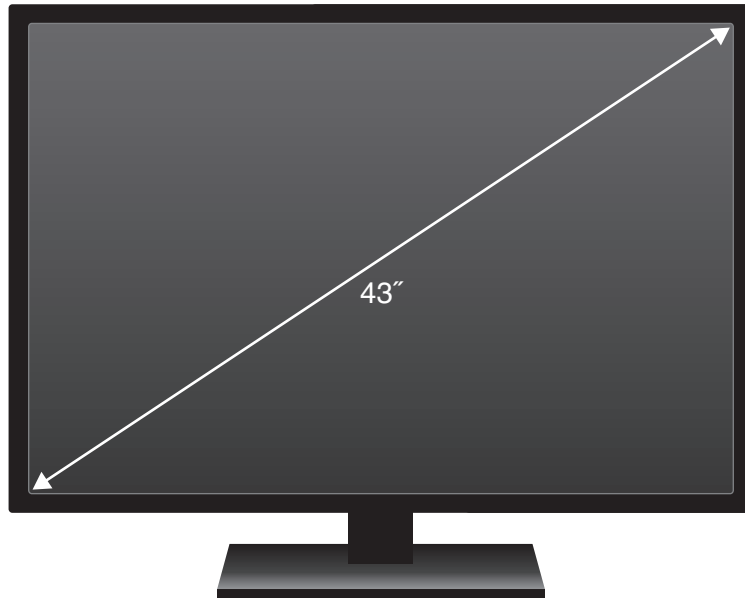
- A** 22 metres
- B** 24 metres
- C** 38 metres
- D** 60 metres

Question 21

The screen size of a television is the measurement of its diagonal, in inches (").

Sal has a 43" television.

The screen width is 95.3 cm and the height is 53.6 cm.



21 What is the screen size of the television in centimetres?

- A** Greater than 148.9 cm
- B** Greater than 95.3 cm but less than 148.9 cm
- C** Greater than 53.6 cm but less than 95.3 cm
- D** Less than 53.6 cm

Questions 22 and 23

In Archeology, it is possible to measure the foot length from the tracks of prehistoric humans. Foot length can be used to estimate the height and hip height of the person using the following formulae:

$$\text{height} = 7 \times \text{foot length}$$

$$\text{hip height} = 4 \times \text{foot length}$$

- 22** A particular *foot length* gives an estimated height of 140 centimetres.

What is the estimated *hip height* for the same *foot length*?

- A** 30 centimetres
 - B** 56 centimetres
 - C** 80 centimetres
 - D** 98 centimetres
- 23** The tracks can also be used to predict whether a person was walking or running by calculating a relative stride length.

$$\text{relative stride length} = \frac{\text{stride length}}{\text{hip height}}$$

The table below shows the relationship between relative stride length and predicted motion.

<i>Relative stride length</i>	Predicted motion
less than 1.5	almost certainly walking
from 1.5 to less than 2	probably walking
from 2 to less than 3	probably running
3 or greater	almost certainly running

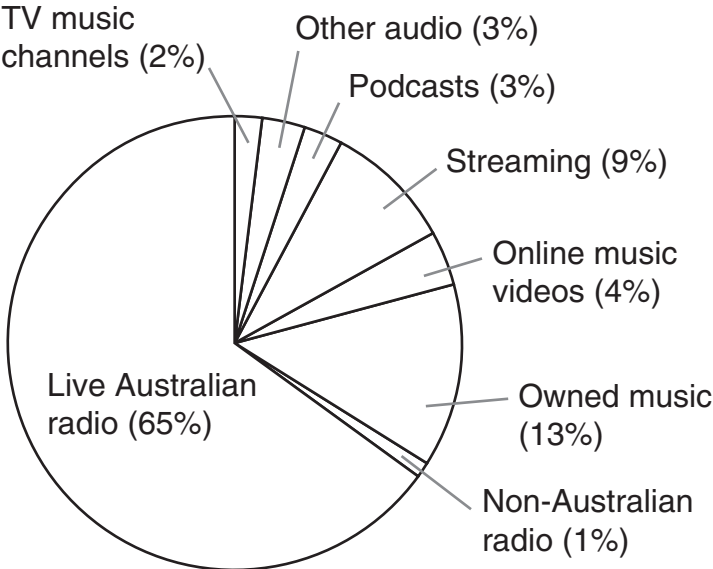
A track reveals a foot length of 23 centimetres and a stride length of 170 centimetres.

What is the predicted motion?

- A** almost certainly walking
- B** probably walking
- C** probably running
- D** almost certainly running

Question 24

A survey asked Australians how much time they spent listening to music from different sources. The chart below shows the results.



24 Which number best completes the following sentence?

The time spent listening to live Australian radio is approximately _____ times that spent listening to podcasts and streaming combined.

- A** 5
- B** 7
- C** 22
- D** 53

Question 25

On 1 June 2020, the population of Australia was estimated to be 25.7 million.

The estimated number for dogs and cats kept as pets was

Dogs: 4.8 million

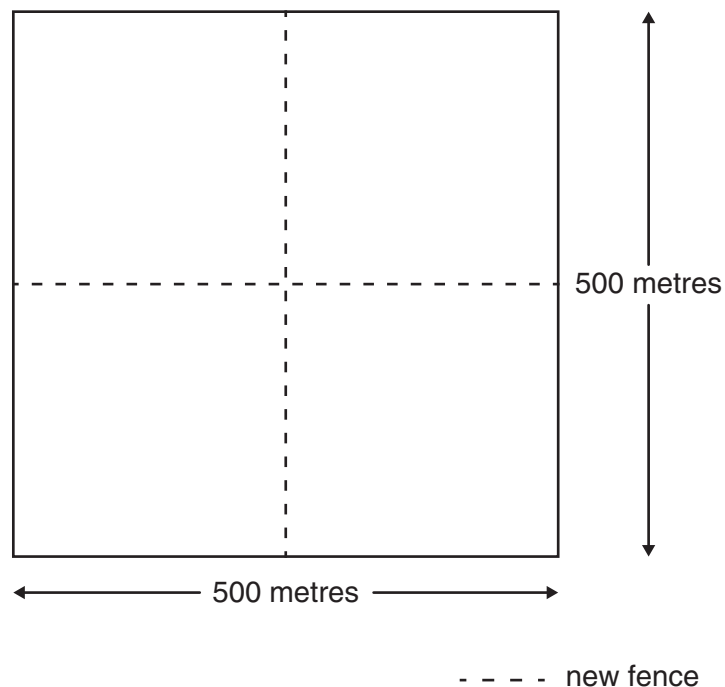
Cats: 3.9 million

- 25** Which of these is nearest to the ratio of the total estimated number for dogs and cats kept as pets to the population of Australia?
- A** 1 : 3
 - B** 1 : 4
 - C** 1 : 5
 - D** 1 : 6

Questions 26 and 27

A square paddock is to be divided into four smaller square paddocks by new fences, as shown.

The small paddocks are equal in area.

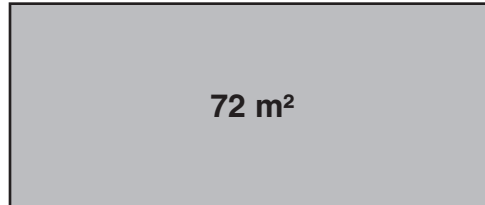


- 26** The new fences cost \$7.50 per metre for materials plus \$66 per hour for labour. The time needed by the fencer to complete the job is 3 days, working 8 hours per day. What is the total cost of the materials and labour required for the new fences?
- A** \$4 278
B \$5 334
C \$8 028
D \$9 084
- 27** One of the small square paddocks is planted with trees. The trees are spaced so that there are 12 trees to every 100 m². How many trees are planted in this one small square paddock?
- A** 7 500
B 6 000
C 1 200
D 625

Questions 28 and 29

A farmer builds a rectangular pen for their pigs.

The area of the pen is 72 m^2 .



28 In Victoria, there are recommendations about the area required for female adult pigs (sows) on farms.

Sows without piglets require 1.5 m^2 per sow.

Sows with piglets require 6 m^2 per sow.

The farmer has 8 sows with piglets.

How many sows without piglets could the farmer also keep in the pen?

- A** 4
- B** 16
- C** 24
- D** 32

29 If the length of one side of the pen is 8 metres, what is the perimeter of the pen?

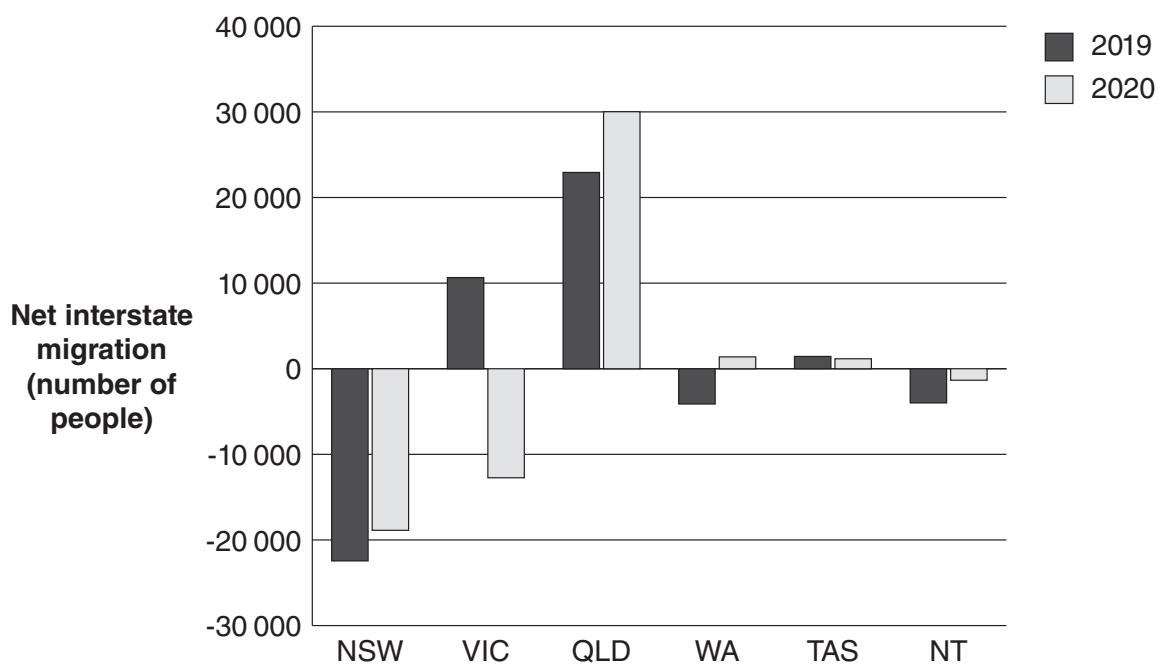
- A** 9 metres
- B** 17 metres
- C** 32 metres
- D** 34 metres

Questions 30 and 31

The graph below shows the net migration values for some states and territories in 2019 and 2020.

The net migration is the difference between the number of people moving to the location and the number of people moving away from it.

A positive value indicates that more people moved to a location than away from it.



Source: Australian Bureau of Statistics

30 How many of the states and territories included in the graph had more people move to them than leave them in 2020?

- A** 1
- B** 2
- C** 3
- D** 5

31 What was the **total** net migration to Queensland in 2019 and 2020?

- A** Less than 10 000
- B** Between 10 000 and 20 000
- C** Between 20 000 and 30 000
- D** More than 30 000

Questions 32 and 33

An electorate is divided into four districts, and altogether it has 108 000 registered voters.

Two parties, Party A and Party B, will participate in an election.

A phone poll of a representative sample of 3 000 voters was held before the election.

The table below shows the results of the poll.

	District 1	District 2	District 3	District 4	TOTAL
Will vote for Party A	330	420	400	420	1 570
Will vote for Party B	320	330	70	150	870
Undecided	150	150	130	130	560
TOTAL	800	900	600	700	3 000

32 If the phone poll is representative of the whole electorate, how many people have already decided to vote for Party B?

- A** 17 400
- B** 29 000
- C** 31 320
- D** 38 508

33 In which district did Party A receive the greatest **proportion** of votes for that district in the phone poll?

- A** District 1
- B** District 2
- C** District 3
- D** District 4

Questions 34 and 35

Martin buys two lamps at a shop. The price of each lamp is \$40.

- 34** When two items are bought, the shop will discount one of the items by 40%.

How much will Martin pay for the two lamps?

- A** \$40.00
- B** \$48.00
- C** \$56.00
- D** \$64.00

- 35** The lamps are also available at four other shops for the same price. Each shop has a different sale.

Which sale would result in the lowest price being paid for the two lamps?

- A** Buy one, get one half price
- B** 20% off each item
- C** \$12 off each item
- D** For every \$15 spent, get \$5 off

Question 36

Six competitors take part in a sailing competition comprising three races.

The result of the competition is calculated using the following.

- In each of the three races, the points awarded to a competitor equal the finishing position of the competitor (1st = 1 point, 2nd = 2 points, etc.).
- The competitor with the **lowest total score** wins.

The table below shows the points awarded in the first two races.

Competitor name	Points for Race 1	Points for Race 2
Ada	3	3
Rita	2	5
Mica	1	2
Hanna	5	6
Natasha	4	1
Sarah	6	4

36 In Race 3, Ada comes 2nd, Mica comes 4th and Natasha comes 5th.

The first three places in the competition are awarded to Ada, Mica and Natasha.

From 1st to 3rd, select the final finishing order.

- A** Mica, Natasha, Ada
- B** Ada, Mica, Natasha
- C** Mica, Ada, Natasha
- D** Natasha, Ada, Mica

Questions 37 and 38

When applying for a community grant, the value in dollars of the volunteers' time is calculated using the following rule:

Multiply the total number of hours the volunteers will work on the project by 30

- 37** A youth club applies for a grant for a project. Ten volunteers will work on this project.

Two volunteers will each work for 50 hours.

The remaining volunteers will each work for 20 hours.

What is the value of the volunteers' time?

- A** \$2 100
 - B** \$3 000
 - C** \$4 200
 - D** \$7 800
- 38** A different community group applies for the same grant.
- They have budgeted \$600 in total for 4 volunteers.
- Each volunteer will work the same number of hours on the project.
- How many hours will each volunteer work on the project?
- A** 5 hours
 - B** 20 hours
 - C** 80 hours
 - D** 150 hours

Questions 39 and 40

As part of a language program, some students fly from Perth to Rome with a stopover in Dubai.

Coordinated Universal Time (UTC) is the main reference time used around the world. The purpose of UTC is to allow comparisons between time zones and avoid confusion about daylight saving time.

The table below shows the three relevant time zones for the flights to Rome.

For example, 13:20 AWST in Perth is 05:20 UTC.

Locality	Time zone	Local time
Perth	Australian Western Standard Time (AWST)	UTC + 8
Dubai	Gulf Standard Time (GST)	UTC + 4
Rome	Central European Time (CET)	UTC + 1

- 39** The flight from Perth to Dubai departs on Wednesday at 22:30 AWST and arrives on Thursday at 05:15 GST.

What is the duration of the flight?

- A** 10 hours 45 minutes
 - B** 8 hours 15 minutes
 - C** 9 hours 15 minutes
 - D** 6 hours 45 minutes
- 40** The flight from Dubai to Rome departs on Thursday at 09:00 GST. The duration of this flight is 6 hours 40 minutes.

What is the local time (CET) when the flight arrives in Rome?

- A** 10:40 CET
- B** 11:40 CET
- C** 12:40 CET
- D** 15:40 CET

Question 41

A journalist wrote, 'Of the estimated number of old growth Alpine Ash trees in Victoria in 1800, only 0.5% remain.'

- 41** If 100 old growth Alpine Ash trees remain, what is the estimated number of old growth Alpine Ash trees in Victoria in 1800?
- A** 5 000
 - B** 20 000
 - C** 50 000
 - D** 200 000

Question 42

At birth, a baby weighed 3 200 grams.

At 8 weeks, the baby weighed 4 480 grams.

- 42** What is the percentage of weight that the baby has gained from birth to 8 weeks?
- A** 14%
 - B** 29%
 - C** 40%
 - D** 71%

Question 43

The table below shows the median starting salaries, in dollars, for graduates from 10 study areas in 2018 and 2019.

The study areas are ranked by the 2019 median salaries.

Rank in 2019	Study area	2018	2019
1	Dentistry	\$83 700	\$88 200
2	Medicine	\$73 000	\$73 100
3	Teacher education	\$65 500	\$68 000
4	Social work	\$65 600	\$67 600
5	Engineering	\$65 000	\$67 500
6	Rehabilitation	\$62 600	\$64 700
7	Computing and information systems	\$60 000	\$64 000
8	Law and paralegal studies	\$61 400	\$63 200
9	Health services and support	\$62 500	\$63 000
10	Nursing	\$61 600	\$62 600

Source: 2019 Graduate Outcomes Survey

- 43** The overall median starting salary of graduates from all study areas was \$61 000 in 2018 and \$62 600 in 2019.

How many of the 10 study areas shown had a median starting salary at least \$500 greater than the overall median starting salary in **both** 2018 and 2019?

- A** 5
- B** 6
- C** 7
- D** 8

Question 44

The speed of boats is usually measured in knots.

One knot is equal to a speed of one nautical mile per hour.

One nautical mile is equal to a distance of 1852 metres.

44 Which speed is closest to a speed of 20 knots?

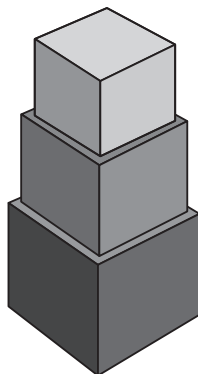
- A** 19 kilometres per hour
- B** 31 kilometres per hour
- C** 37 kilometres per hour
- D** 42 kilometres per hour

Question 45

The tower below is made from cubes.

The edge length of each cube is 1 cm shorter than the cube below it.

The edge length of the largest cube is 8 cm.



45 What is the total volume of the tower?

- A** 149 cm³
- B** 632 cm³
- C** 792 cm³
- D** 1071 cm³

Question 46

A journalist obtains the data below from a state election.

Votes for Party 1	1 506 460
Votes for Party 2	1 069 287
Votes for other parties	938 727
Total votes	3 514 474

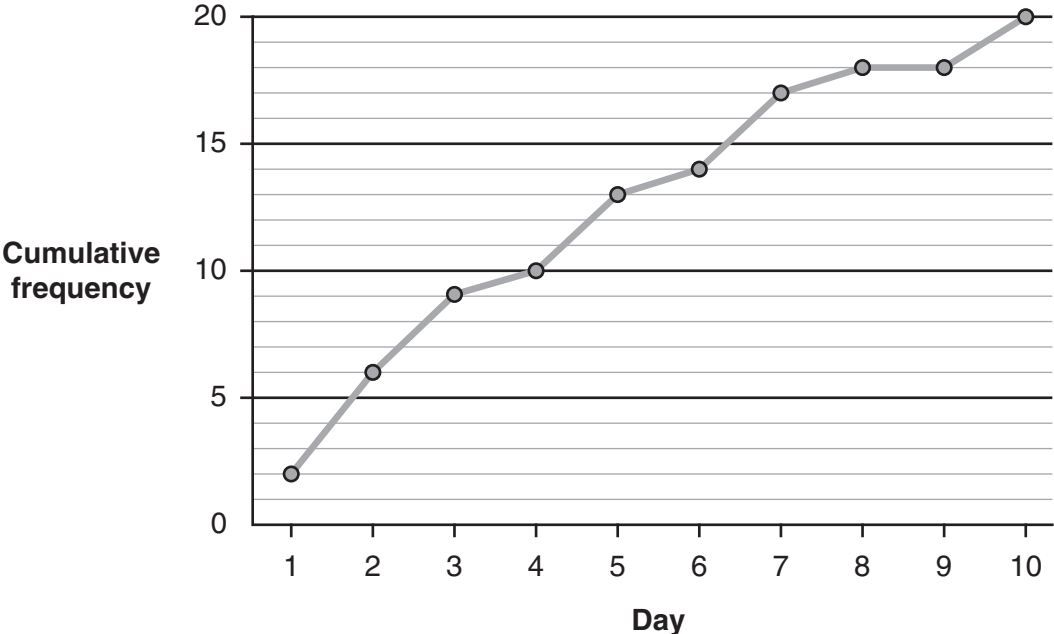
- 46** The journalist writes:
'Party 1 received _____ more of the total votes than Party 2.'

Which percentage completes the sentence correctly?

- A** 12%
- B** 20%
- C** 43%
- D** 50%

Questions 47 and 48

Each day for 10 days, Amina picks the plums from her plum tree as they ripen.
The cumulative frequency graph below shows how many plums she picked for the 10 days.
Altogether she picked 20 plums.



- 47** On day 1 Amina picked 2 plums.
How many plums did she pick altogether on day 2 and day 3?

 - A** 3
 - B** 7
 - C** 9
 - D** 15

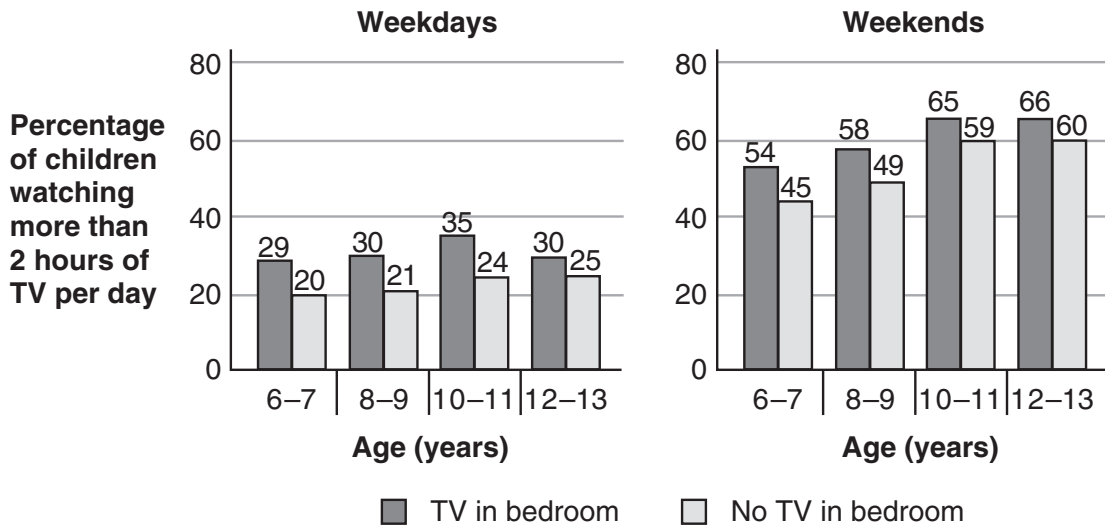
- 48** On how many days did Amina pick fewer than 3 plums?

 - A** 1
 - B** 5
 - C** 6
 - D** 9

Question 49

In 2016, a survey was conducted in Australia into the number of hours that children watched television (TV).

The graphs below compare the percentage of children watching more than 2 hours of TV per day on weekdays and weekends, by location of the TV and by age.



49 Below are two statements about the graphs.

Statement 1: On weekends, the percentage of children who watched more than 2 hours of TV per day increased with age.

Statement 2: On weekdays, more than 70% of children aged 10 to 11 years with no TV in their bedroom watched 2 hours or less of TV each day.

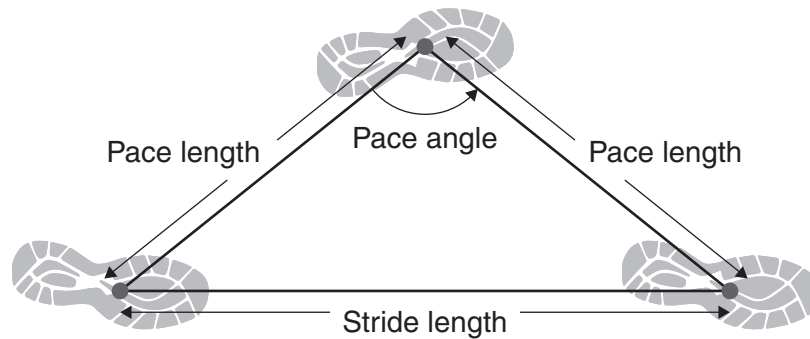
Which option is correct?

- A Both statements are true.
- B Neither statement is true.
- C Only statement 1 is true.
- D Only statement 2 is true.

Question 50

Running efficiency is related to pace angle.

The greater the pace angle, the greater the running efficiency.



50 Four runners each have a stride length of 60 cm.
Which of the runners has the greatest running efficiency?

- A** Runner 1
Pace length = 35 cm
- B** Runner 2
Pace length = 40 cm
- C** Runner 3
Pace length = 45 cm
- D** Runner 4
Pace length = 50 cm

THIS PAGE IS INTENTIONALLY BLANK

MULTIPLE-CHOICE QUESTIONS – LITERACY

Answer this section in the GAT ANSWER BOOK.

Mark your answers on the Multiple-Choice Answer Page.

You are advised to allocate 45 minutes to this task.

Answer **all** questions in pencil.

Shade your answers on the multiple-choice answer page (page 7) of the answer book.

Choose the response that is **correct**, or that **best answers the question**.

A correct answer scores 1; an incorrect answer scores 0.

Marks will not be deducted for incorrect answers.

No marks will be given if more than one answer is completed for any question.

Questions 51 – 54

Buying a Used Car

Do you want to buy a car? They are an expensive investment, so first consider if you really need one. For example, are there good public transport options in your area?

If a car is a priority for you, start saving early to help you afford one that is right for you.

Here are some tips to help you choose the right car.

Due to copyright restrictions, this material is not supplied.

- 1) **What do you need?** Will you mostly be driving short distances around the city, or long distances on rural roads? Do you need to transport work equipment? Think about your present and future needs.

Hatchback cars are a great option for young people!



- 2) **What can you afford?** Work out how much you can afford to spend. You may need to compromise on the car you buy, or save up for longer if you're set on a particular car or feature.



Don't forget insurance! Go online to compare prices for the insurance that suits you.

- 3) **Who will you buy from?** Compare prices so you know what to expect. People often buy used cars from dealers or through private sales. Potential advantages and disadvantages of these two methods are shown below.

	Positives	Negatives
Dealers	<ul style="list-style-type: none"> • Provide car titles (proof of ownership) • Sometimes provide a warranty • May provide loans 	<ul style="list-style-type: none"> • Prices generally higher
Private Sales	<ul style="list-style-type: none"> • Often cheaper 	<ul style="list-style-type: none"> • No warranty available • Title of car is not guaranteed

- 4) **Check carefully!** If you find a car you like, check it carefully. There are useful checklists online, including looking for oil leaks and rust. You can also pay for an independent check. Beware of sellers who resist these checks.
- 5) **Take it on the road.** An extended test drive lets you check the brakes and other things you can only check while driving.

- 51** In the ‘What do you need?’ section, the text suggests that you should answer this question by considering
- A** What use will you make of your car?
 - B** What cars are easiest to drive?
 - C** What cars are most popular?
 - D** What are your favourite cars?
- 52** ‘You may need to compromise on the car you buy, or save up for longer if you’re set on a particular car or feature.’
- What does this statement say you might have to do?
- A** look at different car sellers
 - B** adjust your expectations about which car to buy
 - C** buy a car you can’t really afford
 - D** convince the seller to lower the price of the car
- 53** Which of these sentences from the text expresses an opinion?
- A** ‘Think about your present and future needs.’
 - B** ‘Work out how much you can afford to spend.’
 - C** ‘Don’t forget insurance!’
 - D** ‘Hatchback cars are a great option for young people!’
- 54** Where is this text most likely to have come from?
- A** a school newsletter article about cars for senior students
 - B** an advice manual for car dealers
 - C** a guidebook for young adults about cars
 - D** a magazine about rare cars

Questions 55 – 57

The following text is from a Positions Vacant website.

Volunteer Partnerships

Connection and Commitment

4 opportunities found for volunteer work with **ANIMALS**

Sorted by
relevance

Position 1

Shelter Volunteer – Daisy Hill Lakes

for Noses and Tails Dog Rescue



16 hrs +

Do you want to give homeless and abandoned dogs a second chance? If so, join our hardworking team! Jobs include: taking dogs for walks, feeding dogs, cleaning dog kennels, basic dog training, plus more as needed. We'll train you too – but you'll ordinarily be expected to conduct your work independently. If you are looking to get your paw in the door of animal care jobs, this is a great start!

Position 2

Fundraising Team member – citywide

for Pet Protector Rescue Network

2 hrs +



It's expensive to run four shelters and make sure all animals that come to us are cared for. We're looking for three people to join our fundraising team. You'll need good writing and speaking skills, and to be familiar with social media. Even a couple of hours a month will help us save more dogs, cats and other pets!

Position 3

Animal Enrichment – Black River region

for Greyhound Cuddles Rescue

8 hrs +



Our enrichment program provides stimulation and training for the greyhounds in our rescue kennels while they wait to be adopted. Activities include walking and feeding, plus socialisation and general training. You will be supervised when you start and will usually work with a buddy within a friendly and dedicated team.

Position 4

Pet Therapy Volunteer – northern and western suburbs

for Jocerri Care Services

12 hrs +



We organise visits to aged care homes, where residents love spending time with volunteers and their animals. If you have a gentle, well-behaved animal, and you enjoy meeting people for a chat, join our friendly, experienced and committed team. Whether you have a Great Dane, a bunny or something more exotic (we have one volunteer with a sheep) we'd love to meet you.

Minimum monthly time commitment required Police check required Own transport required

Some computer skills needed Can be done remotely Some experience needed

- 55** ‘We’ll train you too – but you’ll ordinarily be expected to conduct your work independently.’

What does the word ‘conduct’ mean in this sentence?

- A** begin
 - B** carry out
 - C** demonstrate
 - D** move around during
- 56** Which position requires the highest minimum hour commitment from volunteers?
- A** Position 1
 - B** Position 2
 - C** Position 3
 - D** Position 4
- 57** Which position is focused mostly on people?
- A** Position 1
 - B** Position 2
 - C** Position 3
 - D** Position 4

Questions 58 and 59

Due to copyright restrictions,
this material is not supplied.
<https://www.worksafe.vic.gov.au/>

- 58** According to the text, why are young employees at greater risk in the workplace?
- A** They have an exaggerated view of their physical strength.
 - B** They do not have the opportunity to attend training sessions.
 - C** They lack confidence in voicing their concerns to an employer.
 - D** They tend to be afraid of tasks because they are new.
- 59** ‘All featured participants signed release forms allowing WorkSafe Victoria to use the footage from the experiment.’

Why is this sentence included in the text?

- A** to illustrate how easily young people can be influenced
- B** to prevent criticism that WorkSafe Victoria was invading the participants’ privacy
- C** to encourage other young people to participate in future workshops
- D** to ensure that only authorised WorkSafe Victoria employees watch the videos

Questions 60 – 64

Due to copyright restrictions,
this material is not supplied.

<https://www.vic.gov.au/marram-nganyin-aboriginal-youth-mentoring-program>

- 60 Which of the following desirable ways of operating is most emphasised in the first paragraph?
- A working cooperatively
 - B working innovatively
 - C meeting government priorities
 - D following program procedures
- 61 The first paragraph suggests that the government department particularly values information obtained from
- A surveys.
 - B mentors.
 - C Aboriginal artists.
 - D Aboriginal organisations.
- 62 ‘This model recognises that Aboriginal organisations are best placed to understand the needs of Aboriginal communities.’
- The word ‘model’ here is closest in meaning to
- A ideal.
 - B copy.
 - C approach.
 - D stereotype.
- 63 In his artist’s statement, Dixon Patten places most emphasis on
- A young people’s problems.
 - B young people’s innovations.
 - C giving support to young people.
 - D what others can learn from young people.
- 64 ‘... having access to opportunities and support is **crucial** to wellbeing.’
- The word ‘crucial’ here is closest in meaning to
- A essential.
 - B beneficial.
 - C related.
 - D preferable.

Questions 65 – 68

This text is extracted and adapted from Parks Victoria's website.

Buchan Caves Reserve Walks

Nestled in a picturesque valley in East Gippsland, the Buchan Caves Reserve hides an underground world of colour and enchantment just waiting to be discovered. Hundreds of caves are located in this region and some of the most spectacular limestone formations in Australia can be found here. The reserve is home to the Royal Cave and Fairy Cave, two of the finest caves in the region, boasting elaborate stalactites and stalagmites and beautiful calcite.

The Gunaikurnai people are the Traditional Owners of the Country featured in this visitor guide.

Buchan Caves Reserve is located 360 km east of Melbourne. The reserve is a 60-minute drive from Bairnsdale via Bruthen (B500/C620/C608), or a 45-minute drive from Lakes Entrance via Nowa Nowa (A1/C620/C608).

Things to see and do in the reserve

Besides the regular guided tours through the caves, picnicking, and camping, visitors can enjoy some scenic bushwalks that range from easy to challenging.

Moon Hill Walk – 0.5km, 30 minutes return

This short walk leads to viewpoints overlooking the reserve and the Buchan Valley. It passes Moon Cave along the way, so bring a torch and have a look in the entrance. The track continues past the Devils Punchbowl, a large collapsed cave system, to the top of the hill. If you continue on and join Northern Arm Track, it will lead you back to the camping ground and will take an additional 30 minutes.

Spring Creek Walk – 3km, 1.5 hours return

This superb walk splits into the higher Tea Tree Track and the lower Kanooka Track with both meeting at the Spring Creek Falls viewing platform. To come back, take the lower Kanooka Track. This track criss crosses the creek and features mossy rocks, beautiful ferns, and kanooka trees. Keep an eye out for lyrebirds, Gippsland water dragons, kookaburras and king parrots.

Caves Reserve Track – 4km, 2 hours return

This beautiful walk starts opposite the playground and follows a fire access track along a ridge to the northwestern corner of the reserve. Turn left at the intersection to meet up with the Spring Creek Walking Track and the Granite Pools Walking Track.

FJ Wilson Interpreted Walk – 2km, 1 hour return

This walk is named after Frederick Wilson, who came to Buchan in 1907 and contributed significantly to the development of the reserve. This walk starts about 100m east of the Visitor Centre and ends near the Fairy Cave entrance.

- 65** Which of the following quotations gives the most useful information on how to get to the reserve?
- A** ‘Nestled in a picturesque valley in East Gippsland ...’
 - B** ‘Hundreds of caves are located in this region ...’
 - C** ‘Buchan Caves Reserve is located 360 km east of Melbourne.’
 - D** ‘The reserve is a 60-minute drive from Bairnsdale via Bruthen (B500/C620/C608) ...’

- 66** ‘If you continue on and join Northern Arm Track, it will lead you back to the camping ground and will take an additional 30 minutes.’

What do the words ‘If you continue on’ represent here?

- A** a warning
 - B** an expectation
 - C** a possibility
 - D** an instruction
- 67** Kareem has an interest in wildlife but he only has limited time to undertake a walk. Based on the description of the walks, which one seems most likely to suit Kareem’s interest in wildlife?
- A** Moon Hill Walk
 - B** Spring Creek Walk
 - C** Caves Reserve Track
 - D** FJ Wilson Interpreted Walk

- 68** ‘Keep an eye out for lyrebirds, Gippsland water dragons ...’

‘Keep an eye out’ means

- A** be quiet
- B** be careful
- C** be responsible
- D** be observant

Questions 69 – 72

The following text is from an online group chat.

The screenshot shows a chat window for 'Study Group A'. At the top, there is a search bar and navigation icons. The chat history includes the following messages:

- Bree** (grey bubble): Hey team, we need to plan our 'sustainable tourism experience' for the active group assignment. Ideas? The brief says it must fit our budget and be educational.
- Wei** (white bubble): How about overseas volunteering? My cousin went to help in an overseas health clinic. She wants to be a nurse now.
- Riley** (white bubble): That sounds awesome, but we'd need to raise a stack of cash to fund that. Also, I've read reports about some 'voluntourism' programs replacing local jobs.
- Izzy** (white bubble): I'm all for helping out, but I agree with Riley. Careful research required – and \$\$\$! How about old-fashioned eco-tourism?
- Wei** (white bubble): Have you seen those luxury eco-resorts? <https://econourishretreat.nz> Amazing, but not budget-friendly! Flights are expensive AND produce lots of CO2.
- Bree** (grey bubble): Strictly speaking, eco-tourism is just visiting places of natural beauty. If we aim to be low-impact, then trekking around, say, Lake Eildon or taking a guided tour of the rock shelters in Gariwerd fits the definition, right?
- Izzy** (white bubble): Don't you have to contribute to conservation – like count birds or plant native grasses?
- Riley** (white bubble): I don't think you HAVE to do that, but also foot traffic in pristine areas is not very ecologically sound, is it? Anyway, trekking on uneven ground is too hard for me. What about 'slow tourism'? We could take a road trip around Victoria and visit small towns, check out local landmarks, like the silo art trail our neighbours did.
- Bree** (grey bubble): Budget is good. Is car travel considered sustainable?
- Wei** (white bubble): Backpacking? Cycling! If we stick to the regional train line, we can take bikes on board. Does this work for you, @Riley? <https://www.vline.com.au/Maps-stations-stops>
- Riley** (white bubble): I like that idea! We can eat local food, stay at hostels and maybe even spot a whale. Totally sustainable and supports the community too. Check out this video for whale watching. <https://www.youtube.com/watch?v=mO6EDvxQeEQ>
- Izzy** (white bubble): I guess it's 'slow travel' as long as we spend time exploring a region, yeah?
- Bree** (grey bubble): Sounds good. We can work on the details this week. Nice work!

- 69 How does Wei's suggestion of overseas volunteering **not** satisfy the assignment brief described by Bree?
- A It is not local.
 - B It costs too much.
 - C It is not educational.
 - D It requires too much research.
- 70 'Strictly speaking, eco-tourism is just visiting places of natural beauty.'
Bree uses the phrase 'Strictly speaking' to introduce her statement as
- A a new idea.
 - B a personal opinion.
 - C a precise definition.
 - D a loose interpretation.
- 71 Which of the following considerations is **missing** from the group's discussion?
- A location
 - B transport
 - C environmental impact
 - D duration of activity
- 72 In the context of the discussion, what does the word 'sustainable' mean?
- A low impact
 - B renewable
 - C durable
 - D worthwhile

Questions 73 – 76

Recall Notice

Product Safety Recall

Huddy 2 Drawer Desk

**Supplied by Home Products from 6 August 2022 to 6 September 2022
Batch Number TB1964r**

Defect: The MDF* component of the product was found to have levels of formaldehyde higher than those specified by the Australian Standards for wooden products. This affects one batch of the Huddy 2 Drawer Desk supplied from 6 August 2022 to 6 September 2022. This notice is limited to batch number TB1964r.

Hazard: At the levels detected, the product may cause irritation to the eyes, nose and throat.

What to do: Customers should immediately stop using the product. Home Products will be contacting affected customers directly to arrange for collection of the product and a full refund of the purchase price, including any delivery charges.

Contact Details: For more information contact Home Products Customer Service on 1300 876 213 (Monday to Friday, 9am to 5:30pm AEST).


**See productsafety.com.au
for Australian product recall information.**

*MDF or Medium Density Fibreboard is an engineered wood product made from wood fibres, wax and resin.


- 73** The notice suggests that formaldehyde
- A** can no longer legally be used in furniture construction.
 - B** causes no harm when furniture is used properly.
 - C** is allowed to be present only in limited quantities.
 - D** is allowed to be present in only a limited range of furniture types.
- 74** The notice suggests that customers who have bought the desk should
- A** give it back only if it causes a problem for them.
 - B** return it regardless of whether or not it causes a problem for them.
 - C** use it only after it has been chemically treated by the supplier.
 - D** use it only in an open space.
- 75** ‘Home Products will be contacting affected customers directly ...’
- In this context, an ‘affected customer’ is someone who
- A** has the product.
 - B** wants to keep the product.
 - C** placed an order for the product.
 - D** is dissatisfied with the product design.
- 76** Here are two statements about the recall.
- Statement 1: The recall is due to the desk having dangerously sharp corners.
- Statement 2: The recall is due to the desk being structurally unsound.
- Which option is correct?
- A** Only statement 1 is consistent with the text.
 - B** Only statement 2 is consistent with the text.
 - C** Both statements are consistent with the text.
 - D** Neither statement is consistent with the text.

Questions 77 – 81

The text below is a leaflet that a local council mailed to selected households.

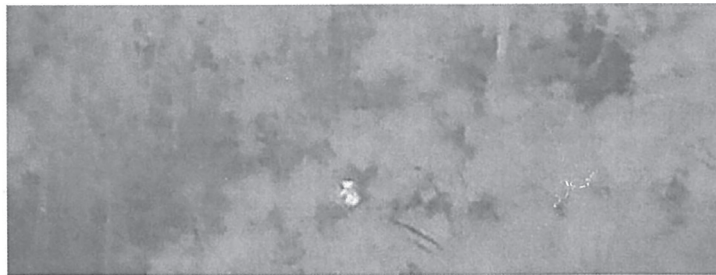


Environment and Education Unit



Redland
CITY COUNCIL

Koala Drone Surveys



Redland City Council will be undertaking koala surveys within bushland adjoining your property between 25 March and 29 May 2022.

This will include the use of a drone on up to five occasions spaced at least one week apart.

These koala surveys use drone-mounted thermal video and will be undertaken during the night (typically between 10 pm and 4 am) by an experienced professional drone operator authorised for this activity by the Civil Aviation Safety Authority (CASA) and Redland City Council.

The thermal imagery is low resolution and is only used to detect the body heat of animals within the forest canopy (see image above). The drone will not fly above private property and a minimum buffer of 50 metres will be maintained from residential buildings. Residents in the area may hear a buzzing noise from the drone or see flashing navigation lights in the sky. For safety reasons, please do not approach the drone operator.

For more information, please contact Redland City Council's Koala Team on 3834 8612.

 Redland City Council

 3829 8999    

- 77 Householders were selected to receive this leaflet based on
- A the precise location of their property.
 - B their acknowledged interest in koalas.
 - C their acknowledged interest in drones.
 - D complaints they had previously made to the council.
- 78 ‘... an experienced professional drone operator authorised for this activity ...’
- Which word in this statement is **not** specifically intended to reassure the householders?
- A experienced
 - B professional
 - C operator
 - D authorised
- 79 ‘The thermal imagery is low resolution and is only used to detect the body heat of animals within the forest canopy ...’
- The leaflet implies that the reason for using low resolution imagery is
- A the need to preserve householders’ privacy.
 - B the desire not to startle the koalas.
 - C the weight limitations of drones.
 - D the limitations imposed by night photography.
- 80 Which of the following questions does the leaflet **not** answer?
- A Will the drones fly over my property?
 - B Why is the council conducting the survey?
 - C How do I get more information about the survey?
 - D Who authorises the drone operators?
- 81 What is the main purpose of the leaflet?
- A to keep people away from the survey area
 - B to minimise public concern about the survey
 - C to raise awareness of koala issues in the council area
 - D to explain the technology that will be used in the survey

Questions 82 – 84

In the following text, Ruby, a newcomer to factory work, is assisted by Phil, who is much more experienced.

At the factory we made a sort of grey sludge that is used as the colouring agent in silver things. Phil was the most knowledgeable man there, and we called him Uncle Phil because he had mentored so many of us. He had a slow way of talking, but when he walked around his eyes darted everywhere. It was revealing to walk with Phil through his section of the factory. He'd point to a faded splash mark on the wall. 'That happened yesterday,' he'd say. 'They forgot to take the lid off the barrel before they tried to tip the product into the tank. Then they tried to wash it off so I wouldn't notice.'

I'd say, 'What about that other splash next to it?'

'That was the day before,' he'd say. 'The hatch on the tank flew open because the pressure built up too much. You can see the top of the splash mark is wider than the bottom.'

Whenever I finished my work early, I'd go over to Uncle Phil's section and help him with what he was doing. We'd stand side by side, knocking the product out of wooden filter frames with a sharp double tap, bang-bang. There was, as with everything in the plant, a knack to it. If you got it right, there was a whoosh as the product fell down the chute. If you got it wrong, you had to scrape the product out of the frame with a knife. Mostly, we didn't need to speak, but if I'd had a problem in my area, I'd tell him about it and he'd always have some advice, which saved me a lot of time and effort.

Bang-bang. Whoosh. 'Phil, how do you know what went wrong by looking at a splash mark?' I asked him.

Bang-bang. Whoosh (that was Phil).

Bang-bang. Pause. Scrape-scrape-scrape. Whoosh (that was me).

'Well,' said Phil, 'it's because I've been here for 27 years. And in that time, you get to make every possible mistake. That's the only way you ever really learn anything.' He turned back to his work and he grabbed another wooden frame. Bang-bang. Whoosh.

- 82** ‘Bang-bang. Pause. Scrape-scrape-scrape.’
What is happening at this point?
- A** Uncle Phil is doing a job efficiently.
 - B** Uncle Phil is doing a job inefficiently.
 - C** Ruby is doing a job efficiently.
 - D** Ruby is doing a job inefficiently.
- 83** What impression of Uncle Phil is created by Ruby’s story?
- A** He is methodical.
 - B** He is overly optimistic.
 - C** He is reluctant to share information.
 - D** He is ambitious.
- 84** What impression of Ruby is presented in the story?
- A** She is highly skilled.
 - B** She is inattentive.
 - C** She is keen to learn.
 - D** She is highly competitive.

Questions 85 – 87

The following text is taken from a transcript of a lifestyle radio segment. The host, Rebecca McGee, interviews Alan Jarvis, a gardening expert.

Rebecca: So Alan, you're a horticulturist. I'm sure listeners would appreciate it if you could share some of your wisdom. What's a hot tip you could give that would turn us all into garden masters like yourself?

Alan: Gee, that's a difficult question to answer! Um, I guess if I had to give just one piece of advice, it would be to stop using chemical pesticides and herbicides. They're very destructive.

Rebecca: Oh really? I've been using weed killers for years, and my garden seems to be doing okay.

Alan: Well, the effects aren't always obvious. Spraying poisons can devastate local bee populations, for instance. And, as most people know, bees play a vital role as pollinators: without them, most of our trees wouldn't bear any fruit!

Rebecca: But surely a bit of broadleaf spray can't hurt? Good to keep those pesky clovers out of your lawn.

Alan: I suppose it's true that some herbicides are not as toxic as others –

Rebecca: Well, that's good news!

Alan: But the fact is that we still just don't know what the long-term effects are of using some of these products. And a lot of newer studies seem to suggest that even the most innocuous ones can wipe out soil microbes which are necessary for healthy, productive plants in the long term.

Rebecca: So, what, we all need to get on our hands and knees now and start picking out weeds individually? I've got a life, you know!

Alan: Well, hand removal is one method, but there are plenty of other organic options that are more efficient. If you want to weed a whole area you can try solarising – laying sheets of plastic film down and then letting the sun do the work. Or for a more controlled approach you can make a spray by mixing diluted vinegar with dishwashing liquid.

Rebecca: Hmph. Well, there you go, folks. Never thought I'd see the day where I'd be hanging a bottle of dishwashing detergent in my garden shed!

85 ‘Gee, that’s a difficult question to answer!’

Which is the most likely reason why Alan Jarvis finds the question difficult?

- A** He is awed by Rebecca’s own gardening expertise.
- B** He is unwilling to share his gardening secrets so freely.
- C** He knows that his gardening advice is likely to be controversial.
- D** He thinks that gardening is more complex than Rebecca’s question suggests.

86 ‘Oh really? I’ve been using weed killers for years, and my garden seems to be doing okay.’

In the context of the whole conversation, Rebecca McGee’s use of the word ‘really’ suggests

- A** concern.
- B** dismay.
- C** doubt.
- D** fascination.

87 ‘I suppose it’s true that some herbicides are not as toxic as others –’

With this comment, Alan Jarvis is most likely trying to

- A** keep the conversation pleasant.
- B** think through the specifics of the issue.
- C** question some of his own assumptions.
- D** gloss over a subject he is not very familiar with.

Questions 88 – 90

The article below is from a local newspaper.

Dirt Bike Jumps

Due to copyright restrictions,
this material is not supplied.

Young BMX bike riders have built dirt jumps on unused public land without seeking permission from the local council. The jumps are designed for all ability levels by providing varying degrees of difficulty. They are popular with dozens of young people in surrounding streets, as well as from other areas. The local council has distributed a leaflet to local residents announcing that the jumps are to be demolished.

Roger Vandenberg, whose children regularly use the jumps, stated: ‘Public land is there to serve the needs of local residents. Our kids should be encouraged to participate in outdoor exercise instead of sitting in front of a screen all day.’

A council spokesperson said that the jumps ‘have been professionally assessed and found to be causing both an unacceptable impact on the environment and a significant risk to public safety.’

Jessie, a 13-year-old BMX rider, disagreed and argued: ‘We should be able to keep the jumps because they are safer than playing contact sports like football.’

88 The council would most likely claim that their decision was based on

- A** a personal point of view.
- B** community opinion.
- C** a philosophical position.
- D** reliable evidence.

89 Roger Vandenberg's statement is best described

- A** as based on observable evidence.
- B** as an expression of personal views.
- C** as a plain statement of fact.
- D** as a self-contradictory position.

90 Below are some headlines about the dirt bike jumps that appeared in local newspapers.

I Jumping bikes crush rare plants in inner-city park!	II Local council orders destruction of bike jumps
III Playing in the dirt keeps 'BMX bandits' off the street and off their screens	IV Rangers unimpressed by BMX tracks

Which newspaper headline is most directly critical of the dirt bike jumps?

- A** I
- B** II
- C** III
- D** IV

Questions 91 – 93

There are thousands of wild horses roaming across the Victorian Alpine National Park. Their hooves are damaging to the environment. Below are some different views on the issue.

Due to copyright restrictions,
this material is not supplied.

<p>I</p> <p>The wild horses have existed in harmony with the high country for over 150 years. Any damage they have done is minimal when compared with the utter devastation caused by other feral animals such as: deer, pigs, rabbits, dogs, cats and foxes.</p>	<p>II</p> <p>The government needs to consider the extensive research evidence and recommendations on how to protect the park from the significant damage done by feral horses. To do otherwise would disregard the threat posed to sensitive native alpine ecosystems.</p>
<p>III</p> <p>Due to copyright restrictions, this material is not supplied.</p>	<p>IV</p> <p>If the horses are proven to be a threat to the environment, they should be humanely captured and relocated, not culled. Many of these magnificent creatures are descended from our valiant war horses. They are an iconic part of Australian cultural history. Who can forget <i>The Man from Snowy River</i>?</p>

- 91** The writer of Statement I refers to ‘other feral animals’ in order to
- A** recommend that these animals should be culled.
 - B** direct attention away from the issue of horses.
 - C** suggest that the high country is able to accommodate all kinds of animals.
 - D** illustrate the view that wild horses are now a natural part of the high country.
- 92** Which two statements are closest in their perspective on the issue?
- A** I and II
 - B** I and III
 - C** I and IV
 - D** II and IV
- 93** Which two statements are most opposed in their perspective on the issue?
- A** I and II
 - B** II and III
 - C** I and IV
 - D** II and IV

Questions 94 – 96

The following text is adapted from the Zoos Victoria website.

Becoming a Zoo Keeper

There are more than 150 zoo keepers employed at our three zoos to ensure world-class welfare and care is provided for a range of native Australian, exotic and endangered animals across the three properties.

Applying for a position as a zoo keeper with Zoos Victoria is slightly complex compared to other advertised roles as you must be on our Preferred Keeper List (see below) in order to be considered for a zoo keeping role.

Ensure your qualifications are up to date

Although a qualification is not required to become an entry-level zoo keeper, qualifications such as Certificate III in Captive Animals are looked upon favourably due to the high number of applications we receive.

Get experience

We recommend getting some work experience or either paid or volunteer experience working with animals (farm animals, domestic animals, or wildlife). We look for applicants with more than three months' experience in these areas, demonstrating your commitment to a career in animal husbandry.

Unfortunately, volunteer animal husbandry experience at Zoos Victoria is only offered to candidates already on the Preferred Keeper List (see below) but there are plenty of organisations that need volunteers to continue their vital work caring for animals. These might include your local veterinary surgery, RSPCA and wildlife rescue agencies.

Apply for a role on our Preferred Keeper List/Keeper Pool

To be considered for a zoo keeping position, applicants must first be accepted onto the Preferred Keeper List/Keeper Pool. Recruitment to this list occurs a few times a year and is always advertised on Zoos Victoria's website.

Short-term contracts are offered to the Preferred Keeper List as the roles become available and can range from a few weeks to 12 months, either in a part-time or full-time capacity.

From time to time a small number of volunteering opportunities become available for candidates on this list.

Maintain physical fitness

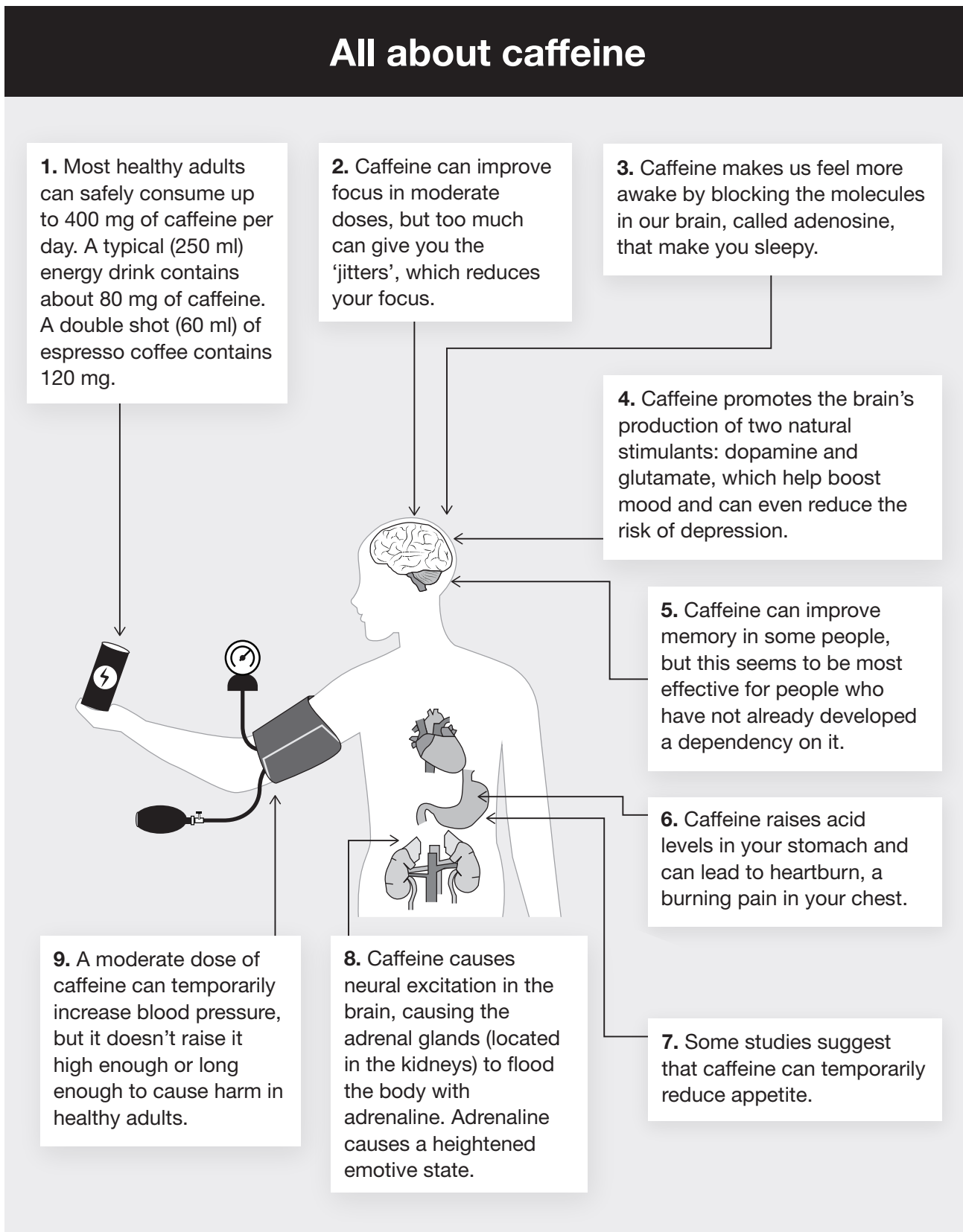
Zoo keeping is physically demanding and applicants need to demonstrate how they maintain their physical fitness. Zoo keepers generally work eight-hour days and the bulk of the work involved is outside during all weather conditions. The physical tasks usually include lots of walking (up to 10 km a day), raking enclosures, shovelling, using wheelbarrows and repetitive lifting.

Applicants who are invited to the Keeper Pool assessment centre will be required to undertake a fitness activity.

- 94** The focus of the first paragraph is to
- A** give a specific description of the job.
 - B** indicate the location of the job.
 - C** highlight the importance of the job.
 - D** warn about the potential danger of the job.
- 95** Which aspect of the day-to-day job of zoo keeping does the text provide the most information about?
- A** its repetitive nature
 - B** its physical activity
 - C** its intellectual stimulation
 - D** further career opportunities
- 96** To be considered for a zoo keeper position at Zoos Victoria, some attributes or achievements are essential and others are desirable.
- According to the text, which of the following are essential?
- A** experience and qualification
 - B** fitness and experience
 - C** qualification and being on the Preferred Keeper List
 - D** fitness and being on the Preferred Keeper List

Questions 97 – 100

The following infographic is from a health poster.



Note: Internal organs are not drawn to scale.

- 97 In box 2, it is stated that too much caffeine "... can give you the 'jitters' ..."
What word would most appropriately represent the quotation marks around 'jitters'?
- A much-exaggerated
B anxiety-inducing
C well-known
D so-called
- 98 In box 5, the text suggests that caffeine would be most likely to improve a person's memory if that person
- A consumed caffeine regularly.
B consumed caffeine infrequently.
C consumed caffeine only when they feel sleepy.
D consumed caffeine only while in a heightened emotive state.
- 99 The text suggests that caffeine might **promote** some chemicals in the body while **blocking** others from acting.
Which combination best describes which chemicals are **promoted** by caffeine and which are **blocked**?

	adenosine (3.)	glutamate (4.)	adrenaline (8.)
A	blocked	promoted	blocked
B	blocked	promoted	promoted
C	promoted	blocked	promoted
D	promoted	blocked	blocked

- 100 In which of the following boxes does the word 'can' express the greatest certainty?
- A 1
B 2
C 5
D 7

Acknowledgements

© Parks Victoria, <https://www.parks.vic.gov.au/-/media/project/pv/main/parks/documents/visitor-guides-and-publications/buchan-caves/buchan-caves-visitor-guide.pdf?rev=9cfc758e36c34279bfb8ef4377a18fd6>, 2019

Redland City Council <https://www.redland.qld.gov.au/> viewed October 2021

© Zoos Victoria <https://www.zoo.org.au/about-us/careers/becoming-a-zoo-keeper/viewed> September 2021